

Auburn Valley State Park

2023-24 Hunting Seasons/Hunting Rules

Refer to map for approximate locations of indicated areas.

1. In addition to the rules and regulations found in the “Delaware Hunting and Trapping Guide: 2023-2024”, specific rules that apply to Auburn Valley State Park are listed below. **Registration of all hunters participating in the Delaware State Park Hunting Program is required. There is an annual \$10 hunting program charge. This charge is waived for Delaware Resident hunters 65 or over or under 16.** Hunters may register at the Auburn Valley State Park Office or any other Delaware State Park where hunting is permitted.
2. If you plan to hunt at Auburn Valley State Park, regardless of where you purchase your State Park Hunting Permit, you must appear in person at the Auburn Valley State Park office at 630 Benge Road, Yorklyn - (302) 729-4278 - during business hours prior to hunting to sign the archery hunting registration form.
3. Deer hunting, as described below, is the only hunting permitted at Auburn Valley State Park.
4. **General Hunting Rules**
 - a. There is **NO SUNDAY HUNTING** in Delaware State Parks
 - b. Failure to comply with any state laws, rules, regulations, and/or policies may result in arrest and/or suspension of all hunting privileges in Delaware State Parks.
 - c. Handguns, rifles with straight-walled ammunition and Sharps rifles are non permitted for deer hunting in Delaware State Parks.
 - d. Use of trail cameras in Delaware State Parks is prohibited.
 - e. Driving deer into and/or through hunting areas is prohibited.
 - f. The clearing/cutting of vegetation to form shooting lanes or for any other purpose is prohibited.
 - g. Baiting is prohibited in Delaware State Parks.
 - h. Use of buckshot is prohibited in Delaware State Parks.
 - i. No motorized hand carts or ATVs are allowed to recover harvested deer. E-bikes may be used on state park trails that allow bicycles. Bicycles, including E-bikes may not be ridden on paths from state park trails to the deer stand, pin or archery zone. Manual deer carts are authorized for use.
 - j. Park only in designated parking areas (refer to map for approximate locations).
 - k. Hunters are allowed to harvest deer of either sex in Auburn Valley State Park.
 - l. State Parks are carry-in, carry-out areas. Please take any trash you accumulate with you.
5. **Deer Hunting – Archery/Crossbow Seasons**
 - a. Permitted in season and in accordance with Delaware state laws, regulations, and rules **ONLY** at the Oversee Farm unit of Auburn Valley State Park, Friday, September 1, 2023 through Wednesday, January 31, 2024.
 - b. Hunters must hunt from metal ladder stands A – I, or with their own portable stand, not less than ten (10) feet off the ground within the painted perimeter around each metal ladder stand.
 - c. There is a single wooden PD stand that is available to hunters who have in their possession a valid disabled hunter card issued by the Delaware Division of Fish and Wildlife.
 - d. Archery stands, including the PD stand will be filled on a first-come, first-served basis using the self-registration tag board system. The tag board is located in the trailhead parking lot on Yorklyn Road. No tag may be removed prior to 5am. Tags must be returned to board anytime a hunter vacates a stand and leaves park premises.
 - e. Hunter orange must be worn by archery hunters at all times when dates overlap with any Statewide Gun Seasons.
 - f. No arrows or bolts may be nocked prior to hunting in the stand. No cocked crossbows are allowed prior to hunting in the stand. Spot and stalk hunting is prohibited.

6. General Firearm Hunting

- a. Permitted in season and in accordance with Delaware state laws, regulations, and rules, **ONLY** at the Auburn Heights Unit of Auburn Valley State Park, November 10 – November 18, 2023; December 9 – December 16, 2023 Special Antlerless and January 13, 15 – January 21, 2024.
- b. Hunters must hunt from one of six wooden stands only.
- c. Stands will be filled on a first-come, first-served basis using the self-registration tag board system. The tag board is located in the trailhead parking lot on Yorklyn Road. No tag may be removed prior to 5am. Tags must be returned to board anytime a hunter vacates a stand and leaves park premises.
- d. Muzzleloaders and shotguns may be used to hunt during General Firearm Seasons.
- e. There is no shotgun hunting during the October season. There is no gun hunting at Auburn Valley State Park during the Delaware Muzzleloader seasons.
- f. Guns shall not be loaded until hunter is in the stand. Spot and stalk hunting is prohibited.

7. Reporting Harvested Deer at Auburn Valley State Park

- a. All deer harvested at Auburn Valley State Park must be reported on the sign-in/sign-out sheet located at the tag board.
- b. All deer must also be registered via the on-line or toll-free telephone reporting system as required by the Delaware Division of Fish and Wildlife. Deer should be registered as follows:

Land Type:	Public
County:	New Castle
Zone:	1A
Location Type:	State or County Park
Location Description:	Auburn Valley State Park

MESSAGE TO ALL HUNTERS:

- Please be careful, discrete and considerate around other park visitors. Understand that many park patrons are NOT hunters and some may feel threatened by your presence.
- By hunting in this park, you are a vital part of our “deer management team.” White-tail deer have been shown to ecologically damage their habitat when they reach 20 deer per square mile. In the majority of our parks, the deer herds have much greater densities than this.
- Your harvest information is very important to us. Please submit your data accurately. Have a safe and successful hunt.

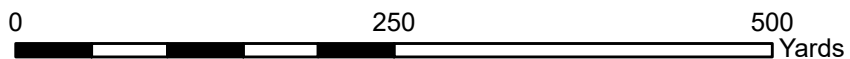
Auburn Valley 2023-24, Updated 6/5/2023



Auburn Valley State Park Hunting Map - Auburn Heights 2023-24

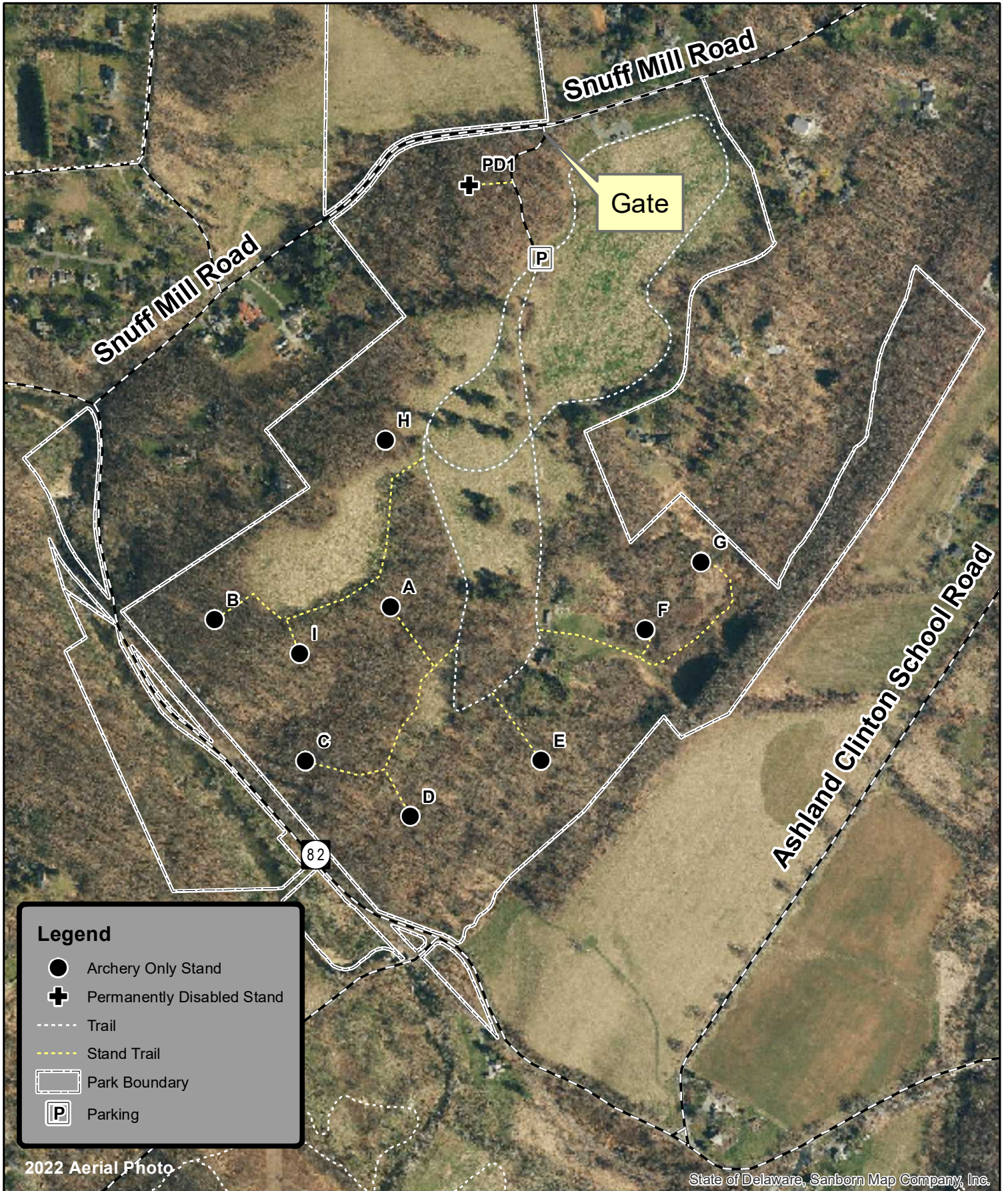


Updated June 5, 2022
 Environmental Stewardship Program
 Division of Parks and Recreation





Auburn Valley State Park Hunting Map - Overseas Farm 2023-24



2022 Aerial Photo

State of Delaware, Sanborn Map Company, Inc.

Updated June 5, 2023
Environmental Stewardship Program
Division of Parks and Recreation

0 500
Yards