

Cape Henlopen State Park (East)

2023 – 2024 Hunting Seasons/Hunting Rules

Refer to map on other side for approximate locations of indicated areas.

1. In addition to the rules and regulations found in the “Delaware Hunting and Trapping Guide: 2023-2024,” specific rules that apply to Cape Henlopen State Park (East) are listed below. **Registration of all hunters participating in the Delaware State Park Hunting Program is required. There is an annual \$10 hunting program charge. This charge is waived for Delaware hunters 65 or over.** Hunters may register at the Cape Henlopen State Park Office or any other Delaware State Park where hunting is permitted.
2. Hunting for deer is permitted in all designated areas in season from September 1, 2023 through January 31, 2024. No firearm hunting for deer is permitted prior to the special **Youth/Non-Ambulatory Disabled Deer Hunt** on November 4, 2023. A tag board is now located across from the Ferry Terminal on the south side of the Trail along the old railroad tracks. All hunters using a park stand must pull the tag from the tag board and fill-in information requested on the sign-in/sign-out sheet. All hunters hunting in Area A are now required to complete the information requested on the sign-in/sign-out sheet (except tag number). During gun seasons hunters in Area A must hunt from an elevated portable stand provided by the hunter.
3. General Park Hunting Rules
 - a. There is **No Sunday Hunting** in Delaware State Parks
 - b. Failure to comply with any state laws, rules, regulations, and/or policies may result in arrest and/or suspension of all hunting privileges in Delaware State Parks.
 - c. Handguns, rifles with straight-walled pistol-caliber ammunition and Sharps rifles are not permitted for deer hunting in Delaware State Parks.
 - d. It is illegal to use or build a nailed or permanent tree stand or ladder. Portable stands must be of a type that will not damage trees. **Unattended stands will be confiscated.**
 - e. **Use of trail cameras** in Delaware State Parks **is prohibited.**
 - f. Driving deer into and/or through hunting areas is prohibited.
 - g. The clearing/cutting of vegetation to form shooting lanes or for any other purpose is prohibited.
 - h. Use of Bait is prohibited in Delaware State Parks.
 - i. Use of buckshot is prohibited in Delaware State Parks.
 - j. Driving motorized vehicles off-road into fields, woods, or along trails is prohibited. No motorized hand carts or ATVs are allowed to recover harvested deer. E-bikes may be used on state park trails that allow bicycles. Bicycles, including E-bikes may not be ridden on paths from state park trails to the deer stand, pin or archery zone. Manual deer carts are authorized for use.
 - k. Park only in designated parking areas (refer to map for approximate locations).
 - l. State Parks are carry-in, carry-out areas. Please take any trash you accumulate with you.
4. Waterfowl Hunting
 - a. Waterfowl Hunting is **permitted** in season **in area A between November 1, 2023 and January 31, 2024.**
 - b. Hunters may NOT construct blinds in this area.
 - c. No waterfowl hunting is permitted in the Gordon’s Pond area.
5. Deer Hunting – Archery and Crossbow hunting
 - a. Permitted in area A in season, from September 1, 2023 through January 31, 2024. Stands 2 – 5, PD1 and PD2 are for the convenience of the hunter and are not mandatory. To hunt from the PD Stands, PD1 and PD2, the hunter must have in their possession a valid disabled hunter card issued by the

Delaware Division of Fish and Wildlife.

- b. There is a minimum 50-yard safety zone along all trails, except the Gordon's Pond Trail which has a 100-yard safety zone.
 - c. Four Archery-only Stands A - D located in the Pinelands section of the Park are available to hunters during the regular Archery season. Hunters must hunt from the stands. Ground hunting is prohibited in this area of the park. Hunters wishing to hunt from these stands must park at the designated parking area for Stand A and walk into the park if the main park gate is closed. When the main gate is open hunters using Stand B, C and D may park near the old tennis courts as indicated on the map.
 - d. Archery hunting is permitted during approved firearms seasons as limited by the rules below and other applicable regulations. Note that hunter orange is required during gun seasons.
6. Deer Hunting - Muzzleloader Season
- a. Permitted in area A, but limited to January 22 – January 27, 2024 only. **There is no October Muzzleloader Season in the Park.**
 - b. Muzzleloaders may also be used during General Firearm Seasons (see below).
 - c. Designated stands are for the convenience of the hunter and are not mandatory. However, during gun seasons hunters must hunt from an elevated portable stand, provided by the hunter, at least 10 feet above the ground. Hunting from the ground during guns seasons is no longer permitted.
7. Deer Hunting – General Firearm Season
- a. Permitted in Area A during the Youth/Non-Ambulatory Disabled Deer Hunt on November 4, 2023, November 10 - November 18, 2023; December 9 - December 16, 2023 Special Antlerless and January 13 - January 21, 2024 seasons. **No gun hunting is permitted until November Shotgun Season.**
 - b. Shotguns and Muzzleloaders are the only firearms permitted for use during General Firearm Seasons in Delaware State Parks.
 - c. Designated stands are for the convenience of the hunter and are not mandatory. However, during gun seasons hunters choosing not to use the wooden stands must hunt from an elevated portable stand, provided by the hunter, at least 10 feet above the ground. **Hunting from the ground during guns seasons is no longer permitted.**
8. All deer harvested in the East Unit of Cape Henlopen State Park must be reported via the on-line or toll-free telephone reporting system as required by the Delaware Division of Fish and Wildlife. Deer should be reported as follows:

Land Type:	Public
County:	Sussex
Zone:	9
Location Type:	State or County Park
Location Description:	Cape Henlopen State Park

9. Special Managed Hunt

A special managed antlerless deer hunt will be held in the main part of Cape Henlopen State Park on Tuesday, January 16 and Wednesday, January 17, 2024. Stands will be filled via an in-person lottery held at the Fishing Pier at 5:00 am each morning. For more information visit the Delaware State Parks website - <https://destateparks.com/Adventures/Hunting>.

MESSAGE TO ALL HUNTERS:

- Please be careful, discrete and considerate around other park visitors. Understand that many park patrons are NOT hunters and some may feel threatened by your presence.
- Please show consideration to fellow hunters.
- Have a safe and successful hunt.



Cape Henlopen State Park Hunting Map - East Side 2023-24



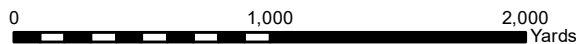
Legend

Deer Stand

- Archery Only Stand
- Deer Stand
- Permanently Disabled Stand
- Parking
- Hunting Trail
- Trail
- Cape Henlopen State Park
- Zone A (Deer & Waterfowl Only)

2022 Aerial Photo

State of Delaware, Sanborn Map Company, Inc.



Cape Henlopen State Park (West)

2023–24 Hunting Seasons/Hunting Rules

Refer to map for approximate locations of indicated areas.

1. In addition to the rules and regulations found in the “Delaware Hunting and Trapping Guide: 2023-2024” specific rules that apply to Cape Henlopen State Park (West) are listed below. **Registration of all hunters participating in the Delaware State Park Hunting Program is required. There is an annual \$10 hunting program charge. This charge is waived for Delaware hunters 65 or over.** Hunters may register at the Cape Henlopen State Park or any Delaware State Park where hunting is permitted.
2. Hunting for deer is permitted in all designated areas in season from September 1, 2023 through January 31, 2024. No firearm hunting for deer is permitted prior to the special **Youth/Non-Ambulatory Disabled Deer Hunt** on November 5, 2023.
3. General Park Hunting Rules
 - a. There is **No Sunday Hunting** in Delaware State Parks
 - b. Failure to comply with any state laws, rules, regulations, and/or policies may result in arrest and/or suspension of all hunting privileges in Delaware State Parks.
 - c. Handguns, rifles with straight-walled pistol-caliber ammunition and Sharps rifles are not permitted for deer hunting in Delaware State Parks.
 - d. It is illegal to use or build a nailed or permanent tree stand or ladder. Portable stands must be of a type that will not damage trees. **Unattended stands will be confiscated.**
 - e. **Use of trail cameras** in Delaware State Parks **is prohibited.**
 - f. Driving deer into and/or through hunting areas is prohibited.
 - g. The clearing/cutting of vegetation to form shooting lanes or for any other purpose is prohibited.
 - h. Use of Bait is prohibited in Delaware State Parks.
 - i. Use of buckshot is prohibited in Delaware State Parks.
 - j. Driving motorized vehicles off-road into fields, woods, or along trails is prohibited. No motorized hand carts or ATVs are allowed to recover harvested deer. E-bikes may be used on state park trails that allow bicycles. Bicycles, including E-bikes may not be ridden on paths from state park trails to the deer stand, pin or archery zone. Manual deer carts are authorized for use.
 - k. Park only in designated parking areas (refer to map for approximate locations).
 - l. State Parks are carry-in, carry-out areas. Please take any trash you accumulate with you.
 - m. All hunters must honor the 200-yard safety zone (**100 yards on each side**) along the Junction-Breakwater Trail. This area is heavily used throughout the year by the non-hunting public.
4. Spray Irrigation Area: Sussex County will be permitting deer hunting on lands around the Wolf Neck Wastewater Treatment Plant during the 2023-24 hunting season. For more information contact Sussex County at (302) 855-7700.
5. Waterfowl Hunting
 - a. Waterfowl Hunting is permitted in season in area F. Hunters may NOT construct blinds in this area.
 - b. Waterfowl Hunting in the park is restricted to between November 1, 2023 and January 31, 2024.
6. Deer Hunting – Archery and Crossbow hunting
 - a. Permitted at Archery Pins E1 – E5 in former Archery-only Area E, and areas F and G in season from September 1, 2023 through January 31, 2024.
 - b. Hunters using Archery pins E1 – E5 must hunt from an elevated portable stand not less than 10 feet above the ground within the radius painted on trees around the central pin. Pins are available on a first

come/first served basis. Tags may be pulled from the tag board located in the parking lot on Wolfe Neck Road. Hunters must sign in and out at the tag board when taking and returning tags.

- c. All areas labeled G are Archery/Crossbow ONLY areas. In area G, Archers must hunt at least 100 yards from the Junction-Breakwater Trail.
 - d. Permitted during firearms seasons. Note that hunter orange is required during gun seasons, **including in the archery and crossbow only areas.**
7. Deer Hunting - Muzzleloader Season
- a. Permitted in area F for the January 22– January 27, 2024 season only.
 - b. Hunters must hunt from an elevated portable stand, provided by the hunter, not less than 10 feet above the ground during all gun seasons.
 - c. There is not an October Muzzleloader Season in the Park.
8. Deer Hunting – General Firearm Seasons
- a. Permitted in area F ONLY including the, **Youth/Non-Ambulatory Disabled Deer Hunt** November 4, 2023, November 10 - November 18, 2023, December 9 - December 16, 2023 Special Antlerless and January 13, 15 - January 21, 2024 seasons.
 - b. Shotguns and muzzleloaders are the only firearms permitted for use during the general firearm deer season in Delaware State Parks.
 - c. Hunters must hunt from an elevated portable stand, provided by the hunter, not less than 10 feet above the ground during all gun seasons.
9. All deer harvested in the West Unit of Cape Henlopen State Park must be reported via the on-line or toll-free telephone reporting system as required by the Delaware Division of Fish and Wildlife. Deer should be reported as follows:

Land Type:	Public
County:	Sussex
Zone:	9
Location Type:	State or County Park
Location Description:	Cape Henlopen State Park

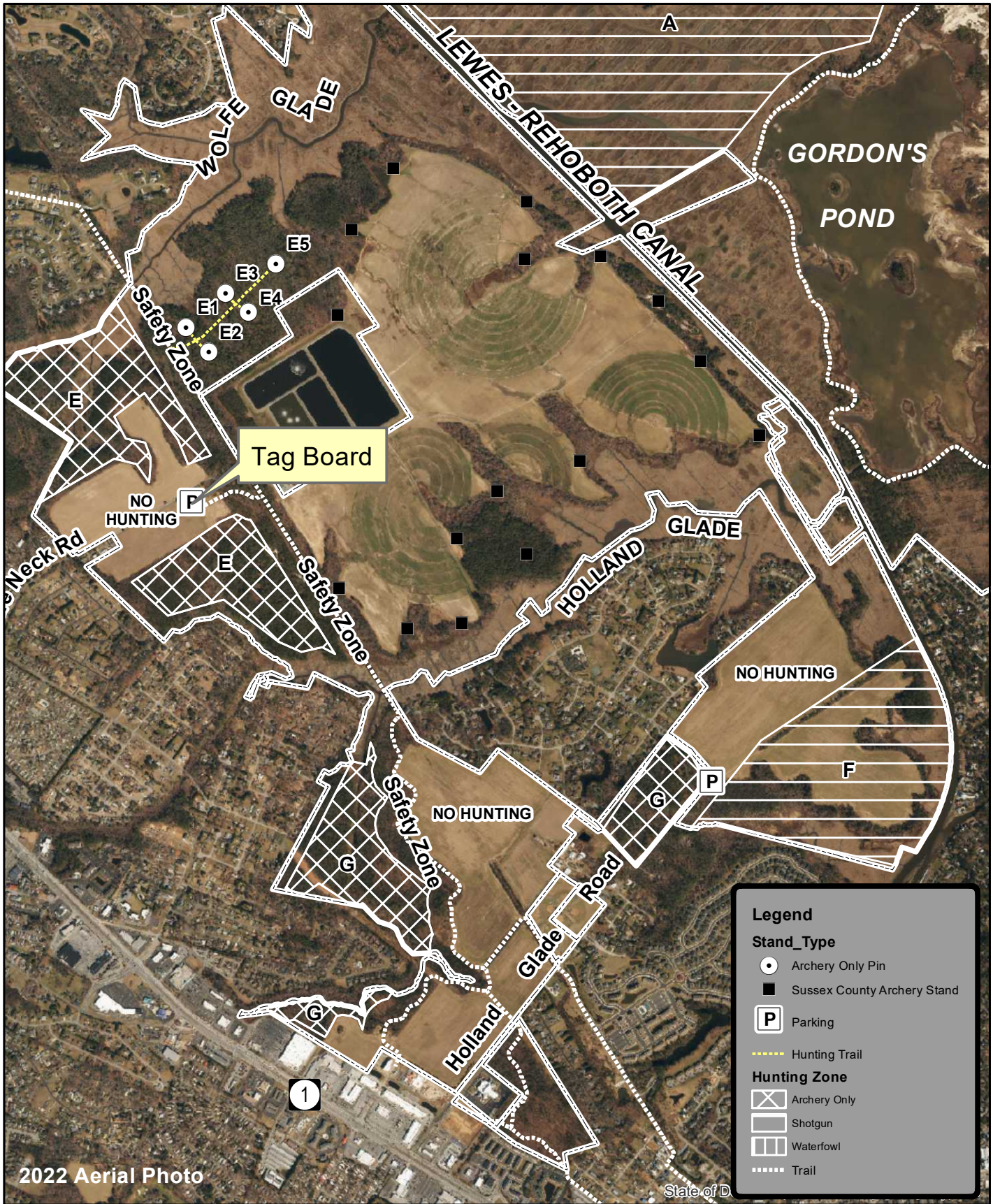
MESSAGE TO ALL HUNTERS:

- Please be careful, discrete and considerate around other park visitors. Understand that many park patrons are NOT hunters and some may feel threatened by your presence. Please show consideration to fellow hunters.

CapeWest2023–24 Updated 6/5/2023



Cape Henlopen State Park Hunting Map - West Side 2023-24



Legend

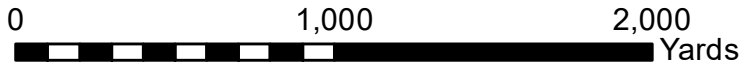
Stand_Type

- Archery Only Pin
- Sussex County Archery Stand
- Ⓟ Parking
- Hunting Trail

Hunting Zone

- ▨ Archery Only
- Shotgun
- ▨ Waterfowl
- ⋯ Trail

2022 Aerial Photo



Cape Henlopen State Park – Angola Neck Nature Preserve 2023 – 2024 Hunting Seasons/Hunting Rules

Refer to map on other side for approximate locations of indicated areas.

1. In addition to the rules and regulations found in the “Delaware Hunting and Trapping Guide: 2023-2024,” specific rules that apply to Cape Henlopen State Park (East) are listed below. **Registration of all hunters participating in the Delaware State Park Hunting Program is required. There is an annual \$10 hunting program charge. This charge is waived for Delaware hunters 65 or over.** Hunters may register at the Cape Henlopen State Park Office or at any other Delaware State Park where hunting is permitted.
2. Hunters wishing to hunt at the Angola Neck Nature Preserve must register in person at the Cape Henlopen State Park office. The office is open daily 8:00 am to 4:30 pm through October. From November 1 to March 31 the office is open Monday – Friday 8:00 am to 4:00 pm.
3. General Hunting Rules
 - a. There is **No Sunday Hunting** in Delaware State Parks
 - b. Failure to comply with any state laws, rules, regulations, and/or policies may result in arrest and/or suspension of all hunting privileges in Delaware State Parks.
 - c. **Use of any firearms** other than compound bows, recurve bows and crossbows **is prohibited.**
 - d. It is illegal to use or build a nailed or permanent tree stand or ladder.
 - e. **Use of trail cameras** in Delaware State Parks **is prohibited.**
 - f. Driving deer into and/or through hunting areas is prohibited.
 - g. The clearing/cutting of vegetation to form shooting lanes or for any other purpose is prohibited.
 - h. Use of BAIT is prohibited in Delaware State Parks.
 - i. Driving motorized vehicles off-road into fields, woods, or along trails is prohibited. No motorized hand carts or ATVs are allowed to recover harvested deer.
 - j. Park only in designated parking areas (refer to map for approximate locations).
 - k. State Parks are carry-in, carry-out areas. Please take any trash you accumulate with you.
4. Deer Hunting – Archery/Crossbow
 - a. Permitted in season, from September 1, 2023 through January 31, 2024.
 - b. Permitted during approved firearms seasons. Note that hunter orange is required during gun seasons.
 - c. There are ten (10) designated archery pin sites. Seven (7) are located on the Angola Neck Tract at the south end of Camp Arrowhead Road and three (3) at the Perry Tract, accessible from Waterview Road east of its intersections with Camp Arrowhead and Bookhammer Landing Roads. Hunters using these pin sites must hunt from a portable, non-damaging tree stand from within the marked perimeter around each pin. Perimeters are indicated by individual trees marked with paint. Stands must be a minimum of 10 feet above ground level.
 - d. There is one archery hunting zone located at the Angola Neck Tract on the west side of Camp Arrowhead Road. The archery zone is an island of upland surrounded by wetland. The hunter using the archery zone may hunt from a portable, non-damaging tree stand or a portable ground blind. However, a stand or blind is not required within the archery zone. There is no minimum height requirement for stands within the archery zone.
 - e. Tags for the ten pins and archery zone will be available on a first-come, first-served basis on the tag board at the designated parking area for pins 1 – 4. Tags may be pulled no sooner than 4:30 am on the day of the hunt. Tags must be returned to the board whenever the hunter vacates a pin or the archery zone.

5. All deer harvested at the Angola Neck Nature Preserve must be reported via the on-line or toll-free telephone reporting system as required by the Delaware Division of Fish and Wildlife. Deer should be reported as follows:

Land Type:	Public
County:	Sussex
Zone:	15
Location Type:	State or County Park
Location Description:	Cape Henlopen State Park

MESSAGE TO ALL HUNTERS:

- Angola Neck Nature Preserve is bordered by residential neighborhoods. Please observe all private property while hunting at the Preserve.
- Remember to make a safe and proper management decision before you shoot.
- Have a safe and successful hunt.

CHSP(Angola Neck)2023-24 Updated 6/5/2023



Cape Henlopen State Park

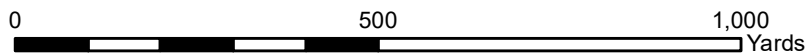
Hunting Map 2023-24 - ANNP Angola Neck Tract



2022 Aerial Photo

State of Delaware, Sanborn Map Company, Inc.

Updated June 5, 2023
Environmental Stewardship Program
Division of Parks and Recreation





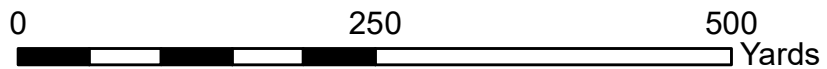
Cape Henlopen State Park Hunting Map 2023-24 - ANNP Perry Tract



- Archery Only Pin
- P Parking
- Hunting Trail
- ▭ Angola Neck Nature Preserve



2022 Aerial Photo



Cape Henlopen State Park – Godwin Tract 2023–24 Hunting Seasons/Hunting Rules

Refer to map on other side for approximate locations of indicated areas.

1. In addition to the rules and regulations found in the “Delaware Hunting and Trapping Guide: 2023-2024,” specific rules that apply to Cape Henlopen State Park (East) are listed below. **Registration of all hunters participating in the Delaware State Park Hunting Program is required. There is an annual \$10 hunting program charge. This charge is waived for Delaware hunters 65 or over.** Hunters may register at the Cape Henlopen State Park Office or at any other Delaware State Park where hunting is permitted.
2. **Hunters wishing to hunt on the Godwin Tract must register in person at the Cape Henlopen State Park office. The office is open daily 8:00 am to 4:30 pm April 1 to October 31. From November 1 to March 31 the office is open Monday – Friday 8:00 am to 4:00 pm.**
3. General Park Hunting Rules
 - a. There is **No Sunday Hunting** in Delaware State Parks
 - b. Failure to comply with any state laws, rules, regulations, and/or policies may result in arrest and/or suspension of all hunting privileges in Delaware State Parks.
 - c. Handguns, rifles with straight-walled pistol-caliber ammunition and Sharps rifles are not permitted for deer hunting in Delaware State Parks.
 - d. It is illegal to use or build a nailed or permanent tree stand or ladder. Portable stands must be of a type that will not damage trees. **Unattended stands will be confiscated.**
 - e. **Use of trail cameras** in Delaware State Parks **is prohibited.**
 - f. Driving deer into and/or through hunting areas is prohibited.
 - g. The clearing/cutting of vegetation to form shooting lanes or for any other purpose is prohibited.
 - h. Use of Bait is prohibited in Delaware State Parks.
 - i. Use of buckshot is prohibited in Delaware State Parks.
 - j. Driving motorized vehicles off-road into fields, woods, or along trails is prohibited. No motorized hand carts or ATVs are allowed to recover harvested deer. E-bikes may be used on state park trails that allow bicycles. Bicycles, including E-bikes may not be ridden on paths from state park trails to the deer stand, pin or archery zone. Manual deer carts are authorized for use.
 - k. Park only in designated parking areas (refer to map for approximate locations).
 - l. State Parks are carry-in, carry-out areas. Please take any trash you accumulate with you.
 - m. There is one Permanently Disabled Deer Stand and five designated pin sites. The Permanently Disabled Stand is for hunters possessing a state-issued disabled hunter card. Hunters using the five pin sites must hunt from a portable, non-damaging tree stand from within the marked 25-yard perimeter around each pin. Stands must be a minimum of 10 feet above ground level.
 - n. Tags for the stand and five pins will be available on a first-come, first-served basis on the tag board at the entrance to the designated parking area. Tags may be pulled no sooner than 4:30 am on the day of the hunt.
4. Archery and Crossbow hunting
 - a. Permitted in season, from September 1, 2023 through January 31, 2024.
 - b. Permitted during approved firearms seasons. Note that hunter orange is required during gun seasons.
5. Muzzleloader Season
 - a. Permitted in season October 6 – 14, 2023 and January 22 – 27, 2024.
 - b. Muzzleloaders may also be used during Shotgun Seasons (see below).

6. General Firearm Season
 - a. Permitted during October 16, 20, 22, 27, 28, and 30, 2023 (Special Antlerless), November 4, 2023 (Youth Hunt), November 10 - 18, 2023; December 9 - December 16, 2023 (Special Antlerless) and January 13, 15 - 21, 2024 seasons.
 - b. **Shotguns** and **Muzzleloaders** are the only firearms permitted for use in Delaware State Parks during general firearm deer seasons.
7. All deer harvested in the Godwin Tract of Cape Henlopen State Park must be reported via the on-line or toll-free telephone reporting system as required by the Delaware Division of Fish and Wildlife. Deer should be reported as follows:

Land Type:	Public
County:	Sussex
Zone:	15
Location Type:	State or County Park
Location Description:	Cape Henlopen State Park

MESSAGE TO ALL HUNTERS:

- The Godwin Tract is bordered by residential neighborhoods. Please observe all private property while hunting on the Godwin Tract.
- Remember to make a safe and proper management decision before you shoot.
- Have a safe and successful hunt.
- Failure to abide by the rules herein may result in the loss of hunting privileges in Delaware State Parks.

CapeGodwin 2023-24 Updated 6/5/2023



Cape Henlopen State Park Hunting Map - Godwin Tract 2023-24

