

2021-2024 CAPITAL PLAN ▶

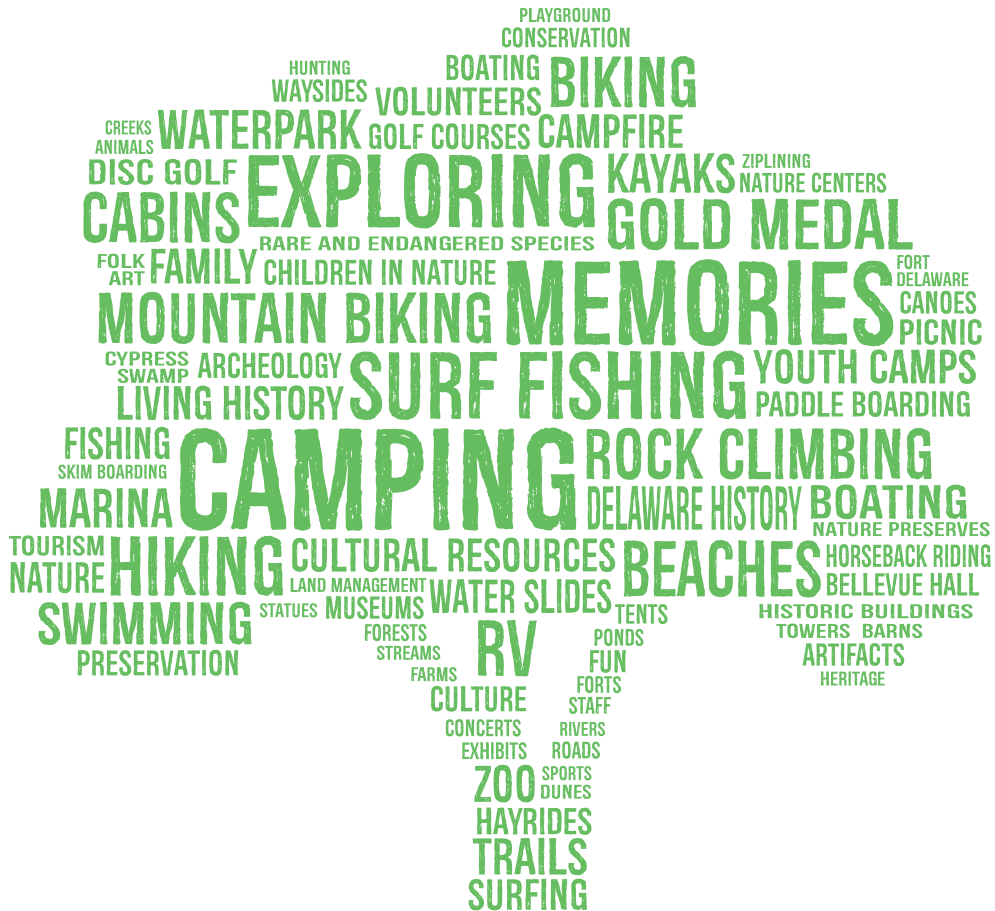
**DELAWARE
STATE PARKS**



DELAWARE STATE PARKS

2021-2024

CAPITAL PLAN



Department of Natural Resources and Environmental Control
Division of Parks & Recreation

CAPITAL PLAN CONTENTS

YOUR STATE PARKS

- 5 Parks and Preserves
- 6 Accessible to All

FUNDING THE PARKS

- 8 Capital Funds For Parks
- 9 Land and Water Conservation Fund
- 10 Statewide Pathway and Trail Funds
- 11 Recreational Trails Program
- 12 Outdoor Recreation, Parks and Trails Grant Program

INVESTMENTS IN OUR PARKS

- 13 New Castle County
- 16 Kent County
- 17 Sussex County
- 19 Preserving Delaware's Past
- 20 Partner/Friends Projects

PARK CAPITAL NEEDS

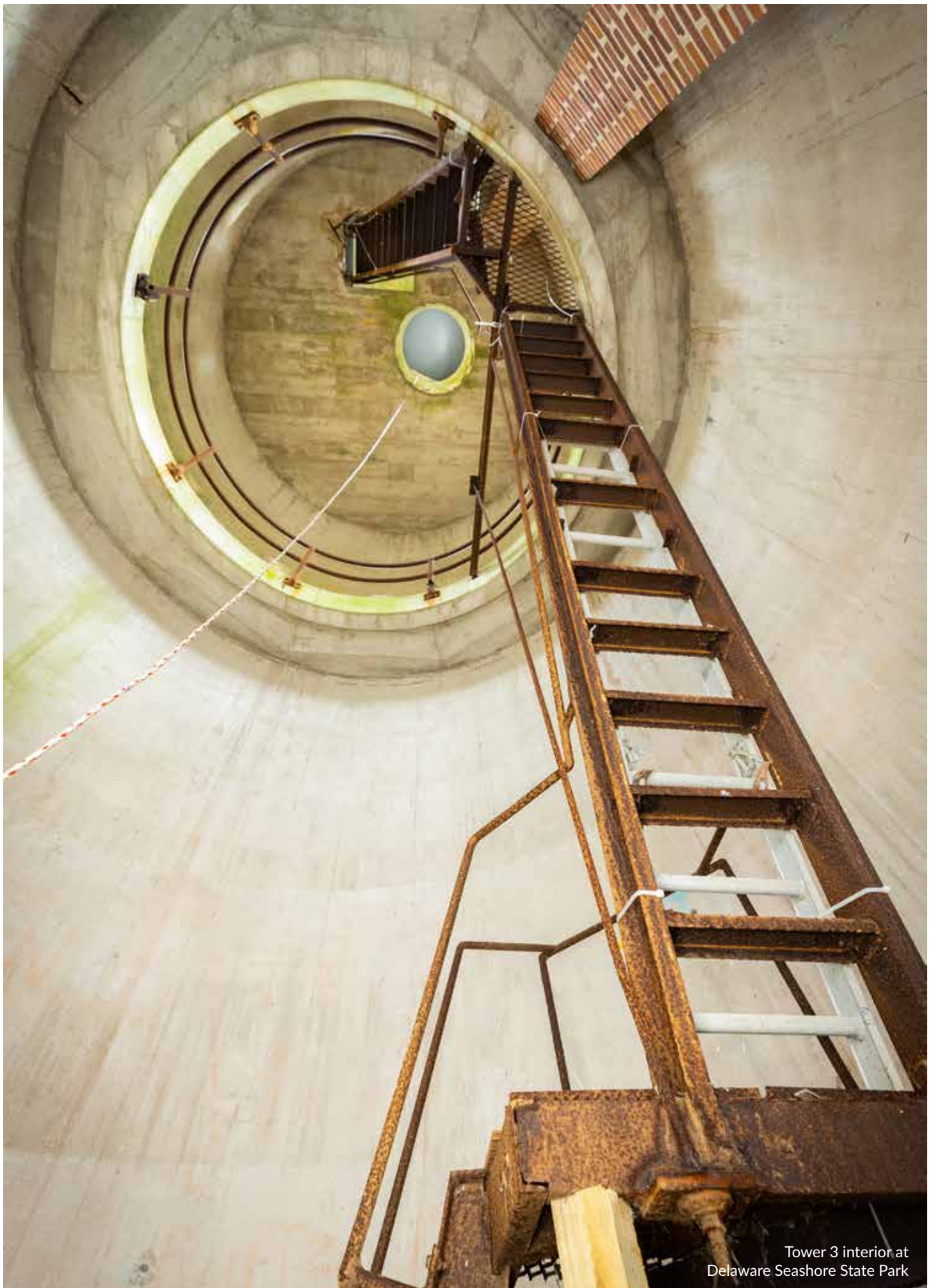
- 22 Top 15 Major Needs
- 25 Top Needs at Each Park

FY2021 CAPITAL PLAN

- 28 FY2021 CIP Request
- 29 Project Summary Chart
- 30 Planning, Design, and Construction Timeline

STATEWIDE PROJECT LIST

- 32 Statewide Projects




Tower 3 interior at Delaware Seashore State Park

YOUR STATE PARKS

**DELAWARE
STATE PARKS**
by the
Numbers:

The mission of Department of Natural Resources and Environmental Control's (DNREC) Division of Parks & Recreation is to provide Delaware's residents and visitors with safe and enjoyable recreational opportunities and open spaces, responsible stewardship of the lands and the cultural and natural resources that we have been entrusted to protect and manage, and resource-based interpretive and educational services.

6.2 
million+
visitors

17 
Parks


26,500
 **Acres** 

627
Buildings
on Park Land



183

**Miles of
Trails**

PARKS, PRESERVES, AND ATTRACTIONS

The Division of Parks & Recreation operates and maintains 17 state parks in addition to related preserves and greenways throughout Delaware.

STATE PARKS:

- | | |
|---------------------------|------------------------|
| Alapocas Run | Fort Delaware |
| Auburn Valley | Fort DuPont |
| Bellevue | Fox Point |
| Brandywine Creek | Holts Landing |
| Cape Henlopen | Killens Pond |
| Delaware Seashore | Lums Pond |
| Fenwick Island | Trap Pond |
| First State Heritage Park | White Clay Creek |
| | Wilmington State Parks |

PRESERVES:

- | | |
|-------------------------|-------------------------|
| Angola Neck | Fork Branch |
| Auburn Heights | James Branch |
| Barnes Woods | Lums Pond Woods |
| Beach Plum Island | Murderkill River |
| Bellevue Woods | Nanticoke River |
| Brandywine Creek Valley | Pea Patch Island |
| Cape Henlopen | Red Clay Creek Valley |
| Cedar Creek | Rehoboth Bay Marshes |
| Doe Bridge | Thompson Island |
| Flint Woods | White Clay Creek Valley |

ATTRACTIONS:

- Brandywine Zoo
- Deerfield Golf Course
- Garrisons Lake
- Golf Club
- Indian River Marina
- Summit North Marina



Delaware State Parks
Camping Cabins

ACCESSIBLE TO ALL

Delaware State Parks provide recreation, nature, environmental and educational opportunities to all Delawareans. It is important that all people have the ability to enjoy our 17 parks and more than 26,000 acres of parkland. Each year, we update and improve our parks with this all-access vision in mind. In 2020, we added several amenities that will provide more access for individuals of all abilities.



Storybook Trail at Alapocas Run State Park

Alapocas State Park

- CanDo Playground transfer platform replacement.
- Storybook Trail near the CanDo Playground with a bonded rubber path and storybooks along the trail to read. Storybooks change throughout the year.

Auburn Valley State Park

- Accessible pavilion ramp.
- Historic bridge at Snuff Mill allowing for the addition of an accessible trail.
- Steam Museum renovation with accessible bathrooms and exhibit space led by the Friends of Auburn Heights.

Bellevue State Park

- Three-season pavilion at Bellevue Mansion with accessible trail to the mansion.

Brandywine Creek State Park

- Installed hunting stands to allow improved hunting for visitors with disabilities.

Cape Henlopen State Park

- Installed hunting stands to allow improved hunting for visitors with disabilities.
- New event space and parking for the Fort Miles Museum with accessible pathway and museum access.



Assawoman Canal accessible kayak launch at Delaware Seashore State Park

Delaware Seashore State Park

- Big Chill Beach Club ramp addition to replace elevator challenges.
- North Inlet Jetty Fishing pier improvements to allow a safer accessible fishing opportunity by improving decking and railing.
- Assawoman Canal accessible kayak launch.
- Assawoman Canal Route 26 underpass.
- Installed hunting stands to allow improved hunting for visitors with disabilities.



Big Chill Beach Club ramp at Delaware Seashore State Park

Holts Landing State Park

- Sea Hawk Trail improvement with an upgraded accessible stone dust trail and 600-foot boardwalk.

Garrison Lake Golf Course

- Garrison Lake added a new event pavilion to attract larger events and golf tournaments by providing outside gathering space.

Killens Pond State Park

- Installed hunting stands to allow improved hunting for visitors with disabilities.

Trap Pond State Park

- Additional sidewalk and lights near the nature center.
- New accessible cabin bathhouse with individual units and showers to replace a composting toilet.
- Bridge replacements throughout the park trail system.

White Clay Creek State Park

- Two new accessible benches along the Tri-Valley Trail.



Sea Hawk Trail improvement at Holts Landing State Park



New event pavilion at Garrison Lake Golf Club



Hunting stand to allow improved hunting for visitors with disabilities.



Accessible cabin bathhouse at Trap Pond State Park

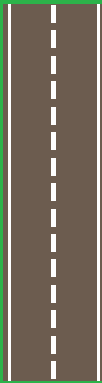


Brandywine Zoo

- New Madagascar exhibit with accessible trail to the lower viewing area, an upper viewing area and pavilion for improved viewing, interpretive programming, and events.



Delaware State Parks maintain **17.8 Miles of Ocean Beach** & **41.1 Miles of Road**



FUNDING THE PARKS

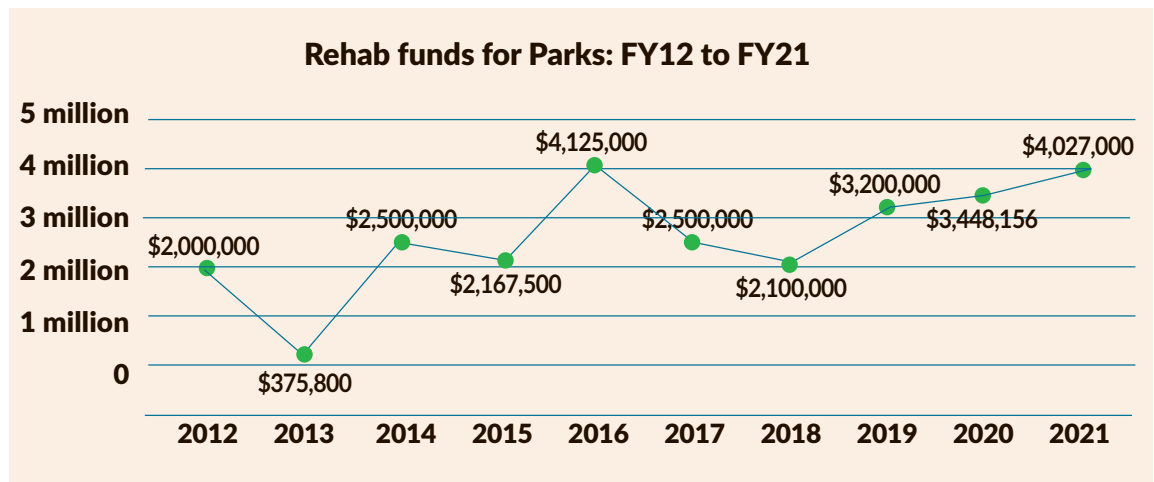
DNREC's Division of Parks & Recreation has an operating budget that is 65% self-funded, which is unique within Delaware government.

Capital expenses come from various sources:

- Bond bill
- User fees
- Federal grants
- Grants and donations
- Community Transportation Funds
- Public/private partnerships
- Loans
- Trust Funds

The Division has a \$155,431,250 capital backlog on projects such as aging infrastructure, roads, buildings, barns, historic structures, pier, sewer systems, as well as new projects like cabins, nature centers, and park offices. In addition we are responsible for properties on or eligible for the National Register of Historic Places.

CAPITAL FUNDS FOR PARKS



FY12 to FY21 Average: **\$2,664,345**



Cauffiel Barn at Bellevue State Park

THE LAND AND WATER CONSERVATION FUND

The Land and Water Conservation Fund (LWCF) was created by Congress in 1965 to preserve, create and ensure public access to outdoor recreation facilities to strengthen the health of all Americans. **Over the past 55 years, the LWCF State Assistance Program, administered by the National Park Service, has provided over \$4.8 billion to states and local communities to fund more than 42,000 outdoor recreational projects across every state and in 98% of counties in America.** Congress funds LWCF with revenues from oil and gas leasing from the Outer Continental Shelf as a way to offset resource consumption with preserving the environment and promoting health through outdoor recreation. No taxpayer funds are used for the program. States can request LWCF funds for recreational planning, acquiring parkland and developing outdoor recreational facilities up to 50% of the costs. States are required to update their Statewide Comprehensive Outdoor Recreation Plan (SCORP) that sets the outdoor recreation priorities and goals for each specific state.

FY2017 = \$904,007
FY2018 = \$1,548,996
FY2019 = \$1,635,930
FY2020 = \$2,019,540
FY2021 = \$2,688,461

LWCF funds recent projects

- Cape Henlopen campground improvements – cabins, contact station, bathhouse and other campground improvements **\$2,774,519**
- Bellevue road paving **\$162,000**
- Brandywine Zoo Madagascar exhibit **\$1,760,221**

Upcoming projects

- Lums Pond Recreation Area #1 paving
- Fort Delaware dock and tram improvements
- Lums Pond cabin complex
- Coastal Region parking paving



Cape Henlopen State Park
Camping Cabins



Bellevue State Park new pavement



Brandywine Zoo Madagascar exhibit

STATEWIDE PATHWAY AND TRAIL FUNDS

Statewide Pathway and Trail Funds are essential for the Division to use for Federal Match (80 federal/20 state) and for necessary reroutes, maintenance, and any new construction like Assawoman Canal underpass and accessible kayak launch and the Killens Pond Elevated Trail Project.

Ten-year average: \$1,700,00

Delaware State Parks has **17.8 Miles of Sidewalk**

&

183 Miles of Trail



Killens Pond State Park elevated boardwalk



Wolfe Neck Loop Trail at Cape Henlopen State Park

Projects Completed

- Killens Pond Elevated Boardwalk
Cost Estimate: \$2,033,163
- Holts Landing - Sea Hawk Trail
Cost: \$830,800
- White Clay Creek - Tri-Valley Phases I & II
Cost: \$2,178,682
- Assawoman Canal underpass
Cost: \$276,710
- Assawoman Canal Kayak Launch
Cost: \$53,699

Projects Under Construction/ Planning

- Pomeroy Trail Lighting
Cost Estimate: \$126,440
- Wendall Castle Trail Paving
Cost Estimate: \$66,222
- Cape Henlopen- Wolfe Neck Loop Trail
Cost Estimate: \$1,750,000

Future Projects

- Auburn Valley Snuff Mill Connector Trail
- Lums Pond Buck Jersey Trail
- Lums Pond Bridge Replacement
- Yorklyn Trail
- Cape Entrance Comfort Station

FEDERAL RECREATIONAL TRAILS PROGRAM

The Federal Recreational Trails Program (RTP) has been instrumental in funding trail planning, development, education, and maintenance activities across the state of Delaware for more than 25 years. Projects include water and land trails within state parks, and county and municipal parks. Statewide funds are utilized as a match for RTP.

Eligible Projects

- Maintenance and restoration of existing trails
- Development and rehabilitation of trailside and trailhead facilities and trail linkages
- Purchase and lease of trail construction and maintenance equipment
- Construction of new trails (with restrictions for new trails on federal lands)
- Acquisition of easements or property for trails
- Assessment of trail conditions for accessibility and maintenance
- Development and dissemination of publications and operation of educational programs to promote safety and environmental protection related to trails, including supporting non-law enforcement trail safety and trail use monitoring patrol programs, and providing trail-related training (limited to 5% of a State's funds)
- State administrative costs related to this program (limited to 7% of a state's funds)

RTP is a matching (80 federal/20 state) program providing investments for Delawareans and millions of visitors to get outdoors and exercise with their children and families. Since 1991, Delaware has funded more than 160 projects totaling more than \$15,000,000. The last yearly apportionments are as follows:

FY2017 = \$896,623	FY2019 = \$896,623	FY2021 = \$896,623
FY2018 = \$896,623	FY2020 = \$896,623	



White Clay Creek State Park

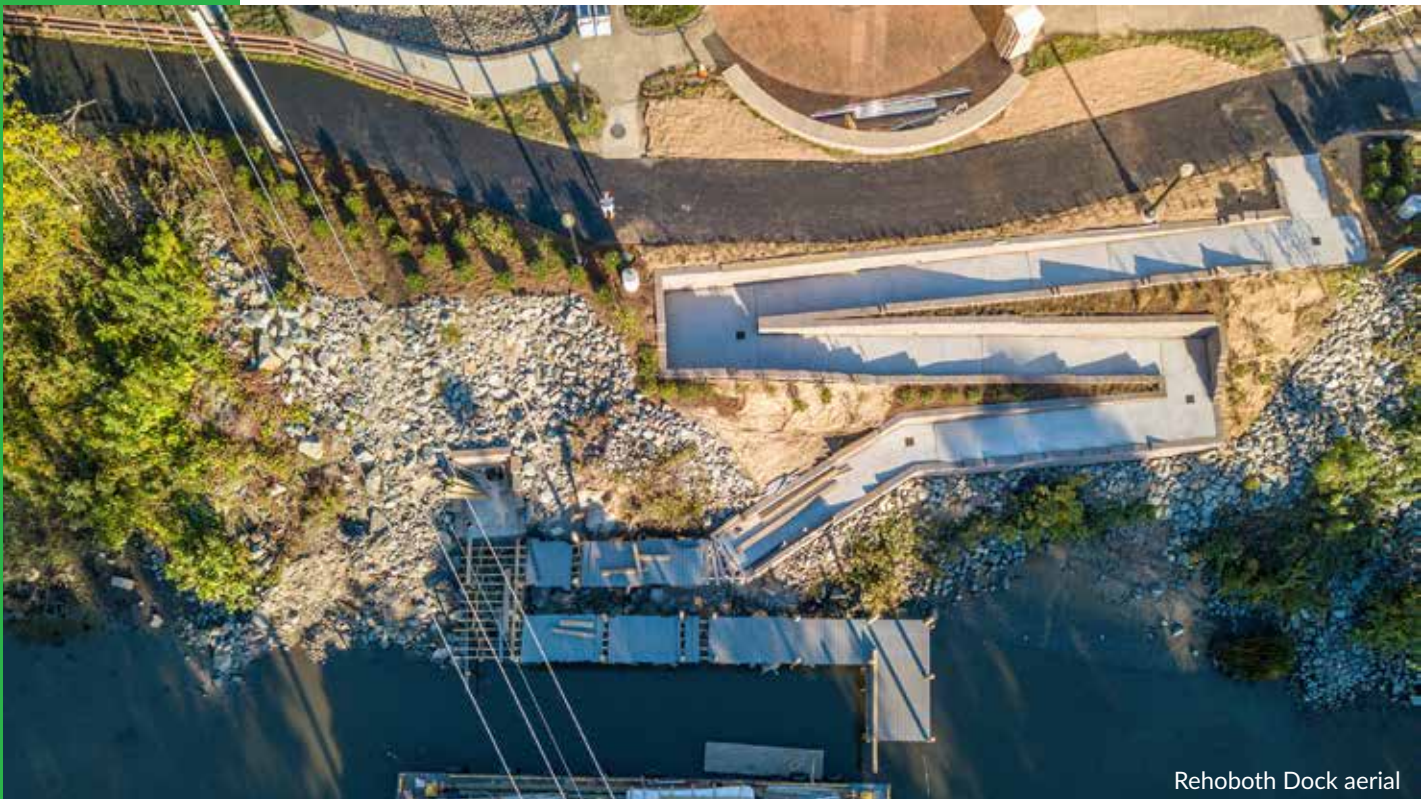


In 1991, the National Recreational Trails Fund Act was passed. The Recreational Trails Program (RTP) is an assistance program of the U.S. Department of Transportation's Federal Highway Administration. The RTP provides funds to the states to develop and maintain recreational trails and trail-related facilities for motorized and non-motorized recreational trail uses.

OUTDOOR RECREATION PARKS AND TRAILS GRANT PROGRAM

As a way to assist the recreational needs of municipalities and counties, DNREC administers the Outdoor Recreation, Parks and Trails (ORPT) grant program with a similar mission to provide needed close to home outdoor recreation opportunities. The ORPT is a matching grant program assisting with public parkland acquisition and outdoor recreation facility development in Delaware. The Program was established in 1986 with annual deposits from real estate transfer tax into the Delaware Land & Water Conservation Trust Fund. Trust-generated income is used to fund the ORPT Program. **Since 1988 when the first grants were awarded, the ORPT Program has provided over \$31 million in matching grant assistance to eligible local, county and state governments throughout Delaware.**

- ORPT assistance is available for the purchase of land for new parks, conservation areas or additions to existing parkland. Funds may also be applied to the development of playgrounds, ballfields, trails, picnic pavilions, and other active outdoor recreation facilities and supporting amenities. Sponsoring agencies, which include local governments and park districts, must agree to dedicate the park to public outdoor recreation use in perpetuity and assume responsibility for continued operation and maintenance of the area.
- Average funding – **\$1 million annually.**
- Supports **15 to 20** projects throughout the state.
- To date, the program has disbursed funds to nearly **75%** of municipalities and all three county governments in Delaware. In the past 3 years, the ORPT program has matched funds for **34** playgrounds and park facilities, **17** trail development projects and **2** parkland acquisitions. An additional 18 proposals are under consideration for the 2021 grant cycle.



Rehoboth Dock aerial

INVESTMENTS IN OUR PARKS

This past year has seen the completion of many projects that will enhance visitor experiences and strengthen our parks for years to come. The following are examples from throughout the park system.

NEW CASTLE COUNTY

COMPLETED

- **Brandywine Zoo Madagascar Exhibit**

The new Madagascar exhibit is the first major new exhibit in more than a decade. The exhibit has a collection of lemurs and radiated tortoises, improved animal holding, keeper workspace and an event space for fundraising and programming.

Project Cost: \$3,735,314

- **Tri-Valley Trail at White Clay Creek**

The Tri-Valley Trail project has been completed, rounding out the accessible hub of White Clay Creek. The accessible trail joins the accessible docks for fishing and wildlife viewing, hay wagon rides, and primitive group camping.

Project Cost: \$3,353,038

- **Bellevue State Park Improvements**

Thanks to the support of the Friends of Bellevue, bond bill and park rehabilitation, the Division completed multiple projects including repaving the entrance road in the park, exterior work on the Mt. Pleasant School House, planning for the Percheron Barn and track, and improved connectivity to the Interpretive Center.

Project Cost: \$623,644

- **Dock and ramp repair at Fort Delaware State Park**

Rebuilt island gangway from storm damage, repair dock and install floats on the mainland dock, and rebuilt deck leading to the Fort.

Project Cost: \$41,887

- **Electrical repair and upgrade at Lums Pond State Park**

A section of three-phase buried primary electric cable between the park office and the nature center was replaced and new line was run.

Project Cost: \$150,000

Statewide, the Division completed **\$10,685,654** in Capital Projects with Delaware-based companies winning **65% of the bids**



Brandywine Zoo Madagascar Exhibit



White Clay Creek State Park Tri-Valley Trail

Delaware State Parks has **13**



Park Offices

31



Pavilions



18
Playgrounds

Delaware
State Parks
Manages

34



Restrooms

&

17



Bathhouses

- **Boat Rental Storage at Lums Pond State Park**

The Lums boat rental operation is an extremely popular destination for visitors to the park. In an effort to improve the quality and longevity of the kayaks, the Division added a boat storage unit on site.

Project Cost: \$80,000

- **H. Fletcher Brown Masonry work at Wilmington State Park**

Aspects of the stone wall and steps throughout the park were repointed.

Project Cost: \$43,750



Lums Pond State Park Boathouse



Wilmington State Parks Lovering Courts

UNDER CONSTRUCTION

- **Lovering Courts Phase II at Wilmington State Parks**

Lovering Courts Phase II is beginning construction with additional courts and improved sidewalks to meet ADA accessibility standards.

Project Cost: \$246,834

- **Brandywine Zoo Animal Support Building**

The Animal Support Building construction is underway that will provide improved veterinary services, keeper space, and quarantine areas for animal checkups and new animals to the zoo.

Project Cost: \$4,589,406



Construction of Brandywine Zoo Animal Support Building

- **Auburn Valley: Museum expansion, historic bridges installation and new force main/pump station**

The newest state park continues to see improved services and amenities with two additional historic bridges being installed, new sewer system that will connect to New Castle County, and a museum expansion project through the Friends of Auburn Heights.

Project Cost: \$7,772,995



Auburn Valley Farm Lane Bridge

PLANNING/DESIGN

- **H. Fletcher Brown improvements at Wilmington State Parks**

H. Fletcher Brown will see improvements to the concrete steps and surrounding area to allow the site to be opened back up to the public. The site has been closed for over a year due to the condition of the concrete steps.

Project Cost: \$250,000

- **Summit North Dredge Containment Area improvements**

The Summit North Marina is in need of dredge work with the containment site located north of the marina. In order to remain in compliance with the Army Corp of Engineers, the site needs improvements to allow for additional dredging capabilities.

Project Cost: \$600,000



H. Fletcher Brown Park at Wilmington State Parks

- **Boat Ramp Courtesy Dock at Lums Pond**

Lums Pond is a popular destination for boaters throughout the summer and fall. To improve the experience and expedite the launching of bass boats, the Division is planning for a Courtesy Dock that will create two launching ramps and a dock that will allow boats to be tied off and users to access their boats in a quick and safe manner.

Project Cost: \$242,000

- **Delaware Greenway Steps to the Swinging Bridge at Wilmington State Park**

The lack of a more direct connection between the Delaware Greenways and the Swinging Bridge has led to cut through paths, safety concerns and erosion. The Division is preparing plans for steps that will lead to a safe crossing closer to the alignment of the Swinging Bridge.

Project Cost: \$200,000

We Manage

104



Zoo Animals



2
Equestrian Centers



5
Cross-Country Courses

17

Sports Fields



KENT COUNTY

COMPLETED



Interior of the Maintenance Storage Building at Killens Pond State Park

- **Garrisons Lake Event Pavilion**

The Division completed construction of a new pavilion at Garrisons Lake Golf Course. The pavilion will attract new business by providing event space for golf outings, tournaments and fundraisers.

Project Cost: \$82,348

- **Maintenance Storage Building at Killens Pond**

To improve storage for the Park and Central Office and provide storage for the new Airstream used for marketing parks, the Division built a new storage building at Killens Pond.

Project Cost: \$76,000

- **Killens Pond Elevated Boardwalk**

The elevated boardwalk trail will run from the boat ramp to the boat rental area. This stretch of the trail, which requires visitors to walk on the shoulder of the road, has been the subject of major complaints from trail users. The trail will divert pedestrians away from the road and take them across the water and spillway, creating a unique experience for walkers, bikers, joggers, and anglers.

Project Cost: \$2,033,163



Killens Pond State Park elevated boardwalk

3  yurts

31  Cabins

824  Campsites

12  Cottages

In the past 5 years, the Division has seen a

137% increase in camping and cabin nights booked.

UNDER CONSTRUCTION

- **Garrisons Lake Golf Club Bunker Work**

Staff has begun work on the sand bunkers to test different techniques for best management practices. This work will continue into the future.

Project Cost: \$425,779

PLANNING/DESIGN

- **Garrisons Lake Golf Course Clubhouse**

Planning has begun for a new clubhouse that will house the day to day operations, golf store, and dining area to host events and fundraisers or allow golfers to enjoy a meal after their round. The clubhouse will also include a deck area that will lead to the new pavilion.

Project Cost: \$390,000



Cart Path at Garrisons Lake Golf Club

- **Cart path repairs at Garrisons Lake Golf Course**

The Division took a step toward making needed improvements to the cart paths at the golf course by removing and repaving the most distressed sections this year. Upkeep and replacement of deteriorated sections will be performed annually.

Project Cost: \$85,000

Delaware State Parks operates



SUSSEX COUNTY

COMPLETED

- **Tower 3 Restoration Phase II**

Phase II of the restoration was completed with the restoration of the exterior concrete and new electric panels. The final phase of the project is funded and will begin in the summer which will complete the interior steps and access to the roof.

Project Cost: \$300,000



Assawoman Canal Trail underpass

- **Indian River Marina Fire Suppression System Replacement**

The existing fire suppression system at the marina was at the end of its lifecycle and was replaced. This was completed prior to the summer boating season.

Project Cost: \$415,000

- **Trap Pond Cabin Area Bathroom**

The composting toilets that serviced the cabin area at Trap Pond were failing and needed to be replaced. The Division constructed a new bathhouse with multiple bathrooms and showers to service the cabin/yurt area and the eastern side of the campground.

Project cost: \$706,928

- **Assawoman Canal Trail underpass and accessible kayak launch**

The Division constructed a trail under Route 26 that ties into the existing sidewalk to minimize road crossings and developed a new accessible kayak launch on the canal to allow users to safely launch their boats to access the canal.

Project Cost: \$311,409



Tower 3 at Delaware Seashore State Park



Tower 7 at Cape Henlopen State Park

UNDER CONSTRUCTION

- **Fishing Pier Repairs at Cape Henlopen**

The park's pier is a World War II structure requiring regular repairs to the pilings to maintain its safety and integrity. The pier has an annual evaluation and repairs are done prior to each operating season as needed. Twenty five pilings are scheduled for repair.

Project Cost: \$300,000

- **Tower 7 Roof Repair at Cape Henlopen**

The membrane on the top of Tower 7 at Cape Henlopen needs a replacement. The Division is in the process of scheduling the work while the Tower is closed to the public. .

Project Cost: \$28,809

PLANNING/DESIGN

- **Cape Henlopen Sewer System**

The Division is working on a plan with the City of Lewes that would include replacement of the park's pump stations, lift stations, and main pipes, and to determine an annual operating expense.

- **Wolfe Neck Trail**

The Division is planning a six-mile single-track trail at the Wolfe Neck area of Cape Henlopen State Park. The trail will also include connection to a canal overlook and will connect with the Junction Breakwater Trail. This project is being undertaken in cooperation with Sussex County as part of a new wastewater irrigation process that will allow for increased public access and a new bathroom facility in the area.

Project Cost: \$1,750,000

- **Biden Environmental Education Center**

Planning to rehabilitate the Biden Environmental Education Center is underway, including addressing all safety and accessibility concerns, and adding conference space and overnight accommodations.

Project Cost: \$11,500,000

- **Paving in the Coastal Region**

The Division is in the process of planning and coordinating efforts to repave critical parking lots in the coastal region, including Cape Henlopen main beach parking, Towers Ocean in Delaware Seashore, and Fenwick Island main beach parking.

Project Cost: \$3,350,000

- **Fort Miles Artillery Park pathway at Cape Henlopen**

The Fort Miles artillery park pathway construction will begin in the spring to align the pathways more effectively and meet ADA requirements.

Project Cost: \$250,000

Delaware State Parks has

7



Boat Ramps

&

2



Marinas

PRESERVING DELAWARE'S PAST

Delaware State Parks is honored to manage more historic structures than any other entity in the State of Delaware. These structures range in variety and chronology; from 18th century farmhouses and Victorian era places of worship, to military forts dating from the Civil War and World War II. Hundreds of archaeological sites in State Parks provide insights into how past generations of Delawareans lived. As stewards, Delaware State Parks maintains these historic places for visitor enjoyment.

The Division invested over **\$1,075,677** in Delaware's cultural and historical sites in 2020.

Auburn Valley State Park

- Oversee House stone repair
- Mansion Parlor Ceiling repair
- Two Historic bridge placements
- Mansion historic assessment

Bellevue State Park

- Mount Pleasant School house renovation
- Hunter Barn roof replacement
- Percheron Barn Structural analysis
- Bellevue Mansion restoration
- Cauffiel House interior restoration

Brandywine Creek State Park

- Historic Stone wall repairs

Cape Henlopen State Park

- Orientation Building HVAC
- Masonry work at Youth Camp area
- Wolfe Neck Trail archaeological survey

Delaware Seashore State Park

- Tower 3 renovation and rehabilitation

First State Heritage Park

- Bell House archaeology survey

Fort Delaware State Park

- Stairwell and stair repair
- Historic Flagpole repair
- Island Generator Shed roof repair
- Reglazed windows
- Masonry work in hallway, mess hall, and visitor center
- Rebuilt Archway next to Endicott

Lums Pond State Park

- Mill House assessment
- Wiley House archaeology dig

Trap Pond State Park

- Cypress Point restroom roof work
- Warrington House documentation
- Bethesda Church exterior

White Clay Creek State Park

- Wells Barn Structural analysis
- Rankin roof

Wilmington State Park

- Bringhurst Fountain and Rose Garden Patio
- H. Fletcher Brown masonry repair
- African American Medal of Honor restoration
- Bayard Monument cleaning
- Historic marker cleaning



Fort Delaware Archway before and after repair

9 

Nature Centers
/Museums

240+



Historic
Buildings

15 
Cemeteries

FRIENDS AND PARTNERS



Go Ape Adventures upgrades at Lums Pond State Park

Friends of Delaware State Parks

Friends groups are independent, non-profit organizations whose members are dedicated to assisting a particular park: helping with special events, and programs, park maintenance, planning, fundraising, staffing the nature centers, and advocating for the parks. The Division has 16 recognized Friends groups statewide.

Partners

The Division works closely to develop strong private-public partnerships to further the Division's mission and improve visitor experiences. Seventeen businesses served as concessionaires in the parks in FY20, providing food, experiences, and rental equipment for park visitors.

FRIENDS AND PARTNER CONTRIBUTIONS TO THE STATE OF DELAWARE

● Jeffrey Miller Group Bellevue Mansion and Cauffiel House

The Bellevue Mansion and Cauffiel House have seen a number of improvements, including renovating the Cauffiel barn as a rental space, upgrading all HVAC at

Cauffiel, refinishing the floors at Bellevue Mansion, removal of the mansion's front porch, landscaping, and room renovation/re-decoration.

Project Cost: \$825,000



Bellevue Hall at Bellevue State Park



Refinished floors at Bellevue Mansion

● Big Chill Beach Club ramp

The Big Chill Beach Club ramp was added to replace the challenges associated with the elevator.

Project Cost: \$180,000

● Go Ape Adventure Element upgrades

Go Ape added a number of upgrades including a Junior Course, Monkey Drop that simulates a free fall, and a continuous belay system.

Project Cost: \$261,000

- **Friends of Auburn Heights Museum addition**

Working with the Division, the Friends of Auburn Heights fundraised and constructed a museum addition that improves the space for exhibiting the collection and adds a bathroom facility, along with improved interior and exterior space and design.

Project Cost:
\$1,100,000



Steam Museum Renovation at Auburn Valley State Park

- **Friends of Bellevue Mount Pleasant Schoolhouse restoration**

Working with the Friends of Bellevue, the Division began work on the restoration of the Mount Pleasant Schoolhouse including removing the addition on the back of the existing structure, roof repair, and repointing and stabilizing the structure.

Project Cost: \$140,745

Friends Contribution: \$20,000



Mount Pleasant Schoolhouse Restoration
Bellevue State Park

- **Delaware Seashore Preservation Foundation and Fort Historical Association**

Working with the Delaware Seashore Preservation Foundation and the Fort Miles Historical Association, the Division is renovating and rehabbing Tower 3 in Delaware Seashore State Park. The work completed to this point includes lighting the tower at night, cleaning the exterior and interior of the tower, excavating down to the door opening, adding a ramp and new door to allow access and replacing the windows on the bottom level.

Project Cost: \$300,000



Tower 3 Interior
Delaware Seashore State Park

PARK CAPITAL NEEDS

CAPITAL PROJECT LIST WITH TOP 15 MAJOR NEEDS

The TOP 15 MAJOR NEEDS on the Delaware State Parks Capital Project List have a high safety concern or legal/regulatory compliance.

SCORING EXAMPLE

Scoring of Cape Henlopen Sewer Replacement and Upgrades:

- 15** High Safety Concern
 - +**
 - 7** Continuation (project underway)
 - +**
 - 6** High Property Preservation
 - +**
 - 5** Leverage Federal Funds/Partnership
 - +**
 - 2** Recreational and Cultural Resource
- = 35** Total Score out of possible **42**



Sewer Repair at Cape Henlopen State Park

1

CAPE HENLOPEN

The park's pier from World War II requires regular repairs to the pilings to maintain its safety and integrity.

Score: 40

\$400,000

2

FORT DELAWARE

Island Tram path: repair and resurfacing. Construction documents are underway.

Score: 35

\$1,800,000

3

WILMINGTON STATE PARKS

H. Fletcher Brown Park renovation of concrete stairs and structures, redesign of existing park layout, pathways, and access.

Score: 35

\$1,250,000

4

CAPE HENLOPEN

Sewer Plant replacement and upgrades. Coordination with City of Lewes is underway. Cost if the park is required to maintain and replace existing septic fields.

Score: 35

\$5,500,000



For every General Fund operating dollar invested in state parks, \$40.02 in economic activity was added to the State of Delaware.

5

CAPE HENLOPEN

Biden Environmental Education Training Center renovations. Planning underway.

Score:
32

\$11,500,000

6

FORT DELAWARE

Masonry repairs to the brick work throughout the historic fort.

Score:
32

\$500,000

7

FENWICK ISLAND

Parking lot expansion, amenity upgrades, additional egress for queuing and emergency access.

Score:
31

\$5,000,000

8

DELAWARE SEASHORE

Erosion of the jetty under the Indian River Bridge. No cost estimate shown due to it being a US Army Corp of Engineer responsibility.

Score:
30

N/A

9

BELLEVUE

Percheron Barn structural and roof repairs

Score:
29

\$235,000

10

KILLENS POND

Boat ramp and parking relocation and improvements.

Score:
29

\$600,000



Tower Ocean Parking Lot Conditions



Biden Environmental Education Training Center at Cape Henlopen State Park



Erosion of the jetty under the Indian River Bridge at Delaware Seashore State Park

Top
15
MAJOR
NEEDS
continued

11

GARRISONS
LAKE

Addition of Cart Barn, Clubhouse and renovation of Cart Paths.

Score:

29

\$1,500,000

12

WILMINGTON

Lovering Avenue Phase II improvements of tennis courts, bocce ball, pickleball and accessible pathway.

Score:

28

\$246,834



Wilmington State Parks Lovering Courts

13

AUBURN VALLEY

Construction of a new pump station adjacent to the Papermill that will pump wastewater from Auburn mansion and museum complex to the new regional pump station.

Score:

27

\$350,000

14

BRANDYWINE
ZOO

Construction of an animal support building that will provide improved space for veterinary care, quarantine, and keeper space. Requirement of AZA accreditation. Construction is underway.

Score:

27

\$4,589,406



Garrisons Lake Golf Club Cart Barn

8

DELAWARE
SEASHORE

Tower Road day use area parking area repave/overlay.

Score:

26

\$750,000



Construction of the Animal Support Building at Brandywine Zoo

CAPITAL PROJECT LIST: TOP NEEDS BY EACH PARK

Alapocas Run State Park

- Alapocas Woods waterfall bridge stone wall stabilization.
Cost Estimate: \$250,000
- Bancroft Mills pavilion project electric and restroom.
Cost Estimate: \$200,000
- Weldin Road pedestrian crossing between Lot D and CanDo playground area.
Cost Estimate: \$100,000



Stone Wall at Alapocas Run State Park

Auburn Valley State Park

- New pump station adjacent to Papermill for the museum and mansion complex.
Cost Estimate: \$350,000
- Mansion, design/construction of septic tank replacement and sewer connection, office to mansion connector trail.
Cost Estimate: \$1,000,000
- New NVF sewer pump station and force main.
Cost Estimate: \$3,841,250

Bellevue State Park

- Percheron Barn roof needs structural repairs and roof shingles.
Cost Estimate: \$235,000
- Mt. Pleasant School House interior rehab.
Cost Estimate: \$750,000
- Figure 8 barn roof repair and replacement.
Cost Estimate: \$700,000

Brandywine Creek State Park

- Pave and fix erosion of existing stoned trails.
Cost Estimate: \$500,000
- Redesign and retrofit composting toilets at Thompsons Bridge.
Cost Estimate: \$250,000
- Historic barn structural stabilization and roof repairs.
Cost Estimate: \$250,000

Brandywine Zoo

- Construction of an animal support building that will provide improved space for veterinary care, quarantine, and keeper space.
Cost Estimate: \$4,589,406
- Implementation of Phase II of the master plan.
Cost Estimate: \$5,000,000
- Renovate the “town house” enclosures. Replace failing wood structures and add new mesh.
Cost Estimate: \$150,000



Percheron Barn at Bellevue State Park

**Top
NEEDS
BY
EACH PARK
continued**

Cape Henlopen State Park

- The park's pier from World War II requires regular repairs to the pilings to maintain its safety and integrity.
Cost Estimate: \$300,000
- Sewer Plant replacement and upgrades. Coordination with City of Lewes is underway. Cost if the park is required to maintain and replace existing septic fields.
Cost Estimate: \$5,500,000
- Biden Environmental Education Training Center renovations. Planning underway.
Cost Estimate: \$11,500,000

Delaware Seashore State Park

- Erosion of the jetty under the Indian River Bridge. No cost estimate shown due to it being a US Army Corp of Engineer responsibility.
Cost Estimate: Unknown
- Tower Road day area parking lot drainage and paving.
Cost Estimate: \$750,000
- Tower 3 restoration and renovation.
Cost Estimate: \$1,000,000

Fenwick Island State Park

- Parking expansion, amenity upgrades, entrance queuing and emergency access.
Cost Estimate: \$5,000,000

First State Heritage Park

- Addition of public restroom and John Bell House storage.
Cost Estimate: \$200,000



John Bell House,
First State
Heritage Park



Masonry repairs needed at Fort Delaware State Park

Fort Delaware State Park

- Island Tram path: repair and resurfacing. Construction documents are underway.
Cost Estimate: \$1,800,000
- Masonry repairs to the brick work throughout the historic fort.
Cost Estimate: \$500,000
- New Island maintenance shop for storage and equipment.
Cost Estimate: \$400,000

Fox Point State Park

- Pave Phase II road and parking area.
Cost Estimate: \$300,000
- Parking lot light repairs.
Cost Estimate: \$75,000
- Pave bike path from railroad tracks to park entrance.
Cost Estimate: \$125,000

Garrisons Lake Golf Club

- Addition of Cart Barn, Clubhouse and renovation of Cart Paths.
Cost Estimate: \$1,500,000

Holts Landing State Park

- Upgrade septic system for the park.
Cost Estimate: \$250,000
- Relocate the kayak launch closer to the existing boat launch.
Cost Estimate: \$250,000
- Staff housing.
Cost Estimate: \$300,000

Indian River Marina

- Dry stack roof replacement and exterior skin.
Cost Estimate: \$1,300,000
- Piling sandblast, seal, and pile jackets.
Cost Estimate: \$800,000
- Moving the fuel dock to resolve fueling and maintenance concerns.
Cost Estimate: \$300,000

Killens Pond State Park

- Boat ramp and parking relocation and improvements.
Cost Estimate: \$600,000
- Campground bathroom renovations.
Cost Estimate: \$200,000
- Campground "F" Loop power upgrades.
Cost Estimate: \$130,000

Lums Pond State Park

- Replacement of wooden docks with aluminum docks in the campground.
Cost Estimate: \$150,000
- New waterfront cabin complex.
Cost Estimate: \$3,000,000
- Replacement of boat rental docks with floating aluminum docks.
Cost Estimate: \$600,000

Port Penn Interpretive Center

- Interpretive boat shed.
Cost Estimate: \$100,000

Statewide and Special

- Statewide security camera system.
Cost Estimate: \$100,000
- Addition of camper cabins throughout campgrounds.
Cost Estimate: \$100,000
- Consistent entrance signs at all state parks.
Cost Estimate: \$1,000,000



Bathroom at Cypress Point, Delaware State Park

Trap Pond State Park

- Bathroom and septic replacement at Cypress Point.
Cost Estimate: \$600,000
- Repair the lift station at the campground and recondition of wet well.
Cost Estimate: \$100,000
- Bob Trail reroute with elevated trail.
Cost Estimate: \$250,000

White Clay Creek State Park

- Nature Center bridge evaluation and replacement.
Cost Estimate: \$275,000
- Replacement of barn roofs.
Cost Estimate: \$250,000
- Robinson house upgrades for ADA and structural stability.
Cost Estimate: \$100,000

Wilmington State Parks

- H. Fletcher Brown Park renovation.
Cost Estimate: \$1,250,000
- Lovering Avenue Phase II improvements of courts and accessible pathway.
Cost Estimate: \$250,000
- Steps connecting the Delaware Greenway to the Swinging Bridge to improve alignment and safety, while reducing erosion.
Cost Estimate: \$200,000

FY2022 CAPITAL PLAN

FY2022 CAPITAL IMPROVEMENT PROJECT REQUEST

Park Facility Rehabilitation and Public Recreational Infrastructure - \$5,000,000

Funding is requested to rehabilitate the State's park and wildlife area systems, which currently contain more than 700 buildings in 32 public access areas on nearly 100,000 acres statewide. Prior year

funding has gone to the addition of pavilions statewide, updating bathroom facilities, maintaining historic structures, statewide roofing projects and repaving of critical parking areas. Priority for funds are the continuation of paving at Cape Henlopen, Towers Ocean and Fenwick Island, evaluating and improving ingress and egress at all parks, statewide campground assessment for additional amenity upgrades, and upgrading bathroom facilities and septic statewide, including Brandywine Creek's Thompson Station Bridge and Trap Pond's Cypress Point.



Parking Lot Conditions

Cape Henlopen State Park Biden Environmental Education Training Center - \$3,000,000

Funding is requested to continue construction documents and construction for renovations to the Biden Environmental Training Center at Cape Henlopen State Park. Renovations will include updates to bring the building into compliance with modern safety standards and accessibility requirements and modernizing the facility to allow additional conference and training opportunities. This facility would provide training and overnight facilities not currently found in the state park system. To date, plans have been completed for the staff office space and the overall layout of the facility. The first phase of the project will be put out to bid in 2021 and construction will begin in summer of 2021. The funding we have received, approximately \$3.4 million will: relocate the staff to a new addition at the existing Park Office; Develop full construction drawings by phase for renovation of first and second floor, in addition to the existing Park Office; Develop full construction drawings by phase for renovation of first and second floor, in addition to the outside required improvements; Asbestos removal and abatement; Demo of interior of Biden Center, and removal of exterior stairwells; Roof replacements, Update or replace Sanitary sewer and lift station, underground heating water piping, sprinkler system, heating system, and HVAC; and the removal of exterior chain link fence. An additional \$3 million is requested for Phase II to begin renovation of the interior. The final phase will complete the exterior of the building, windows, parking, and pathway connections.

PROJECT SUMMARY

STATE CAPITAL FUNDS	FY2022 Governor's Recommend	FY2023 Request	FY2024 Request
Park Facility Rehab and Public Recreational Infrastructure	\$5,000,000	\$6,500,000	\$7,000,000
Historic Sites State Parks		\$500,000	\$500,000
Statewide Trails and Pathways		\$1,000,000	\$1,000,000
Cape Henlopen Biden Environmental Education Training Center	\$3,000,000	\$5,000,000	
White Clay Master Plan Nature Center Implementation		\$300,000	\$4,500,000
Fort Delaware Dock and Tram Paths		\$2,000,000	\$3,000,000
Fenwick Island Parking Lot and Entrance		\$1,750,000	\$5,000,000
H. Fletcher Brown Park Renovation		\$1,000,000	
Lums Pond Cabins		\$1,500,000	
Killens Pond Water Park Renovations		\$3,000,000	\$3,000,000
Cape Henlopen New Fishing Pier Design		\$1,500,000	\$8,000,000
Trap Pond Splash Park		\$1,300,000	
Total	\$8,000,000	\$ 25,350,000	\$32,000,000



Biden Center Exterior



Biden Center Multipurpose Room

P

= Planning

D

= Design

C

= Construction

PLANNING, DESIGN, AND CONSTRUCTION

All project timelines are dependent upon available funds

PARK/LOCATION	PROJECT
Auburn Valley State Park	Steam Museum Fire Pump
Auburn Valley State Park	Sewer Force Main and Pump Station
Auburn Valley State Park	Farm Lane Improvements
Auburn Valley State Park	Snuff Mill Trail
Auburn Valley State Park	New Maintenance Building
Auburn Valley State Park	Paper Mill Building Stabilization
Auburn Valley State Park	Benge Road Pump Station
Bellevue State Park	Stabilize the Percheron Barn
Bellevue State Park	Repair Drainage and Resurface Track
Bellevue State Park	Schoolhouse Windows and Doors
Brandywine Zoo	New Quarantine Building
Cape Henlopen State Park	Fishing Pier Repairs
Cape Henlopen State Park	Cape Sewer Connection to Lewes WWTP
Cape Henlopen State Park	Biden Center Renovations Phase IA Upgrade Site Utilities
Cape Henlopen State Park	Biden Center Renovations Phase IB Demo and Exterior
Cape Henlopen State Park	Biden Center Renovations Phase IC 1st Floor Renovations*
Cape Henlopen State Park	Biden Center Renovations Phase ID 2nd Floor Renovations*
Cape Henlopen State Park	Pier Replacement
Cape Henlopen State Park	Wolfe Neck Trail
Delaware Seashore	"Old Camp" Renovation
Delaware Seashore	Tower III Restoration
Fenwick Island State Park	Fenwick Island Renovations
Fort Delaware State Park	Tram Path Rehabilitation
Fort Delaware State Park	Maintenance Building
Fort Delaware State Park	Trail and Scenic Overlook
Fort Delaware State Park	Inland Dock Repairs
Garrisons Lake Golf Club	New Clubhouse
Garrisons Lake Golf Club	Cart Path Rehabilitation
Killens Pond State Park	Boat Ramp Parking Lot
Killens Pond State Park	Water Park Improvements
Lums Pond State Park	New Cabins
Summit North Marina	Spoil Disposal Site Improvements
Trap Pond State Park	Splash Pad
Various	Statewide Parking Lot Paving
White Clay Creek State Park	Master Plan Implementation - New Nature Center
White Clay Creek State Park	Big Pond
White Clay Creek State Park	Deerfield Doors and Windows
Wilmington State Park	H. Fletcher Brown Park Renovation
Wilmington State Park	Lovering Courts Phase II

TIMELINE

Fiscal Year 2021				Fiscal Year 2022				Fiscal Year 2023				Fiscal Year 2024				Fiscal Year 2025				Fiscal Year 2026			
Jul	Oct	Jan	Apr	Jul	Oct	Jan	Apr	Jul	Oct	Jan	Apr	Jul	Oct	Jan	Apr	Jul	Oct	Jan	Apr	Jul	Oct	Apr	Jan
C	C																						
D	D	D	C	C	C	C																	
D	D	D	D	C	C	C																	
P	P	P	D	D	D	C	C																
P	P	P	D	D	C	C	C																
				D	D	C	C		C	C			C	C									
D	D	D	D	D	D	C	C													C			
D	D	D	C	C																			
D	D	D	C	C																			
		D	D	C	C																		
C	C	C	C	C																			
D	D	C	C	C																			
P	P	D	D	D	D	C	C	C	C	C	C												
P	D	D	D	C	C	C	C																
P	D	D	D	D	C	C	C	C											D				
P	D	D	D	D	D	D	D	D	C	C	C	C	C										
P	D	D	D	D	D	D	D	D				C	C	C	C	C							
				P	P	P	P	D	D	D	D	D	D	C	C	C	C	C	C	C	C	C	
P	P	P	D	D	D	D	C	C	C														
P	P	D	D	D	D	D	D	D	C	C	C												
	D	D	D	C	C	C	C																
		P	P	D	C	C	C		C	C	C												
		C	C	C	C																		
		C	C	C	C																		
		C	C	C	C																		
				D	D	D			C	C	C												
		D	D	C	C																		
		C	C																				
				D	D	D	D	C	C	C	C												
				D	D	D	D	C	C	C		C	C	C		C	C	C					
P	P	D	D	D	D	C	C	C	C														
D	D	D	C	C																			
P				D	D	D	D	C	C	C	C												
	D	D	C	D	C	C																	
				P	P	P	P	D	D	D	D	C	C	C	C								
		P	P	P																			
		D	D	D	C	C	C																
P	P	P	D	D	C	C	C																
D	D	C	C																				

STATEWIDE PROJECTS

Projects are placed in order of score.

P = Planning

D = Design

C = Construction

Management Unit Name	Score	Project Description	Progress Status	Preliminary Cost Estimate
Cape Henlopen State Park	40	Continued pier repair and planning for future use and location	D	\$300,000
Wilmington State Park	35	H. Fletcher Brown Park - Rotary park project, complete overhaul - evaluation underway	P	\$1,250,000
Cape Henlopen State Park	35	Sewer Plant replacement and upgrades - coordination with City of Lewes is underway	D	\$5,500,000
Fort Delaware State Park	35	Island tram path: repair resurface path - construction documents underway	D	\$1,800,000
Cape Henlopen State Park	32	Biden Center renovations	D	\$11,500,000
Fort Delaware State Park	32	Fort Delaware masonry repairs underway	C	\$500,000
Fenwick Island State Park	31	Fenwick Island parking expansion, amenity upgrades, drop-off, renovation, entrance queuing and evacuation route improvements		\$5,000,000
Delaware Seashore State Park	30	Erosion of the jetty under the Indian River Bridge. There is no cost estimate shown because it is a USACOE responsibility but was included because of the potential to impact park operations		
Bellevue State Park	29	Percheron Barn Roof- Structural repairs and roof shingles.	D	\$235,000
Killens Pond State Park	29	Boat ramp parking Improvements	P	\$600,000
Garrisons Lake	29	This includes the addition of a Cart Barn, New Clubhouse, and renovating the Cart Paths	D	\$1,500,000
Wilmington State Park	28	Brandywine Park: Lovering Avenue Tennis Courts; Renovate or Remove - underway	C	\$250,000
Auburn Valley State Park	27	Construction of a new pump station adjacent to the Papermill that will pump wastewater from the "Auburn Heights" portion of the park to the new regional pump station	C	\$350,000
Brandywine Zoo	27	Construction of an animal services building that will address an issue for AZA accreditation	C	\$5,500,000
Delaware Seashore State Park	26	Tower Road day use area parking area repave/overlay	D	\$750,000
Wilmington State Park	26	North Park Drive: Provide safe pedestrian crossing near condos; close off cut through	P	\$200,000
Bellevue State Park	25	Mt. Pleasant School House interior rehab	D	\$750,000
Indian River Marina	25	Dry Stack roof replacement and exterior skin	D	\$1,300,000

Management Unit Name	Score	Project Description	Progress Status	Preliminary Cost Estimate
Auburn Valley State Park	24	Repairs and renovations to the Mansion including connecting the septic tank to the Benge Road pump station and office to Mansion connector trail		\$1,000,000
Brandywine Creek State Park	24	Pave, fix erosion on existing stone trails		\$500,000
Bellevue State Park	23	Includes both the metal and flat roofs		\$700,000
Fort Delaware State Park	22	Island maintenance shop - rebuild	D	\$400,000
Auburn Valley State Park	22	Complete NVF sewer	D	\$3,841,250
Auburn Valley State Park	22	Construction of new maintenance building.		\$250,000
Trap Pond State Park	21	Bathhouse and septic replacement Cypress Point	D	\$600,000
Wilmington State Park	21	Brandywine Park: North Park Drive; replace curb, walkway, and fence		\$150,000
Cape Henlopen State Park	21	Replace all water lines and valves		\$1,000,000.00
Fort Delaware State Park	21	Fuel dock piling replacement/repair engineering and construction		\$250,000
Delaware Seashore State Park	20	Address New Road erosion		\$250,000
Auburn Valley State Park	20	Trail system and four historic bridges	C	\$2,750,000
Bellevue State Park	19	Address drainage issues and resurface the track	D	\$270,000
Bellevue State Park	19	Tennis Center (Figure 8) parking lot resurface. The parking lot has excessive cracking and deterioration - review underway		\$600,000
White Clay Creek State Park	18	Nature Center bridge evaluation and replacement		\$275,000
Trap Pond State Park	18	Repair the lift station at the Campground and recondition the wet well		\$100,000
Delaware Seashore State Park	18	Tower 3 renovations - underway	D	\$1,000,000
Auburn Valley State Park	18	Evaluate and determine best use of the Oversee House (Curatorship, RFP, Nature Center or office space)		\$500,000
Cape Henlopen State Park	18	Improvements to the Wave Building		\$500,000
Auburn Valley State Park	17	NVF installation of parking lots, infrastructure, amphitheater	P	\$5,000,000
Fenwick Island State Park	17	New dune crossing to alleviate problems with expanding dune		\$200,000
Lums Pond State Park	17	Replacing existing docks at Lums Pond with aluminum docks and adding a handicap accessible launch		\$150,000
Fort Delaware State Park	17	Fort Delaware pathways (barge and stone) - under design	D	\$750,000
Auburn Valley State Park	17	Masonry repairs of tunnel wall and erosion, drainage issues and aging metal		\$75,000
Alapocas Run State Park	17	Alapocas Woods: Alapocas Run waterfall bridge-stone walls stabilization (engineering review)		\$250,000
Trap Pond State Park	17	Build a boardwalk on the Bob Trail at Wootten Road to provide a safe fully off-road trail experience		\$250,000

Management Unit Name	Score	Project Description	Progress Status	Preliminary Cost Estimate
Brandywine Creek State Park	17	Redesign and retrofit of composting toilets at Thompsons - we currently have these closed with port-a-johns in front		\$250,000
Lums Pond State Park	17	New full service waterfront cabins	D	\$3,000,000
Bellevue State Park	16	Bellevue Hall 2nd and 3rd floor completion. This project will maximize the use of the facility	P	\$500,000
Lums Pond State Park	16	Replace docks at the boat rental with floating aluminum docks. The existing ones are high maintenance		\$600,000
Lums Pond State Park	16	Lums Mill House - Address the basic stabilization needs of the structure such as repairing masonry and the outer-envelope just to be stable, proper grading, and replacing the roof		\$170,000
Delaware Seashore State Park	16	Evaluate shoreline protection options for the south shoreline or the island, including living shoreline, wave attenuation structures or as a last resort armoring		\$500,000
Fort Delaware State Park	16	Mainland public dock: piling integrity in question		\$250,000
White Clay Creek State Park	16	Replacement of aviary/greenhouse and boathouse roofs		\$85,000
Wilmington State Park	16	Run water and electric from the Bancroft Mills parking lot to the bathroom and pavilion location	P	\$0
Lums Pond State Park	16	Upgrades to the primary electric supply to Lums Pond State Park. One section has been done as an emergency but future problems are expected because the remaining cable is the same age		\$750,000
Auburn Valley State Park	15	UPDATE: Restore and rehab the Paper Mill for interpretive programming and museum experiences		\$2,000,000
White Clay Creek State Park	15	Niven Property: documentation of historic significance for demo		\$400,000
Bellevue State Park	15	Cauffiel Barn Renovations, including roof replacement		\$500,000
Lums Pond State Park	15	Trail along entrance road connecting Jersey Trail to Area 1	D	\$1,500,000
Fort Delaware State Park	15	Heronry overlook replacement. The current heronry look out is improperly constructed and unstable - construction documents underway	D	\$300,000
Bellevue State Park	15	Demolish far end of Miami Track		\$150,000
Trap Pond State Park	15	Demolition of the abandoned wastewater building located across Trap Pond Road from the boat ramp parking lot		\$45,000
White Clay Creek State Park	15	Robinson house: ADA upgrades to facility structural repairs		\$100,000
White Clay Creek State Park	15	Replace roof on Wells barn		\$45,000
Brandywine Creek State Park	15	Historic barn in highly visible location, roof failures, structural failures, painting		\$250,000
White Clay Creek State Park	15	Repairs to smaller outbuildings on Niven property		\$200,000

Management Unit Name	Score	Project Description	Progress Status	Preliminary Cost Estimate
Holts Landing State Park	15	Evaluate adding a holding tank. The current septic tank backs up in the maintenance building. The system for the entire park needs to be upgraded especially since more people are using it now		\$250,000
Statewide	15	Statewide security camera system		\$100,000
Cape Henlopen State Park	15	Main Beach bathhouse parking lot resurface. The parking lot has numerous pot holes and is severely cracked	D	\$600,000
Cape Henlopen State Park	15	Herring point restrooms, sewer		\$400,000
Delaware Seashore State Park	14	Evaluate jetty deterioration		\$1,000,000
Lums Pond State Park	14	Go Ape Parking Lot resurface. The parking lot has extreme deterioration and needs to be resurfaced	D	\$600,000
White Clay Creek State Park	14	Determine future use of Krapf House. Perform work in preparation for intended use		\$150,000
Trap Pond State Park	14	Improve the drainage at the campground		\$150,000
Cape Henlopen State Park	14	Museum plan development and implementation	C	\$500,000
White Clay Creek State Park	14	Various repairs to maintenance complex		\$150,000
Lums Pond State Park	13	Parking for Area 3		\$300,000
Delaware Seashore State Park	13	Elevate dune crossing at Tower Road		\$200,000
Cape Henlopen State Park	13	Replace Campground Laundry/Update facilities	C	\$60,000
Trap Pond State Park	13	Resurface the Bob Trail, American Holly Trail, and repair the Huckleberry Trail	C	\$50,000
White Clay Creek State Park	13	Improvements to the Nature Center entrance road to potentially include two-lane access and pedestrian trail		\$1,500,000
Cape Henlopen State Park	13	Single Track Trail on the Wolfe Neck Tract of Cape Henelopen	P	\$1,000,000
Cape Henlopen State Park	13	Design and construction of a new fishing pier		\$18,000,000
Cape Henlopen State Park	12	Cape Dorm Updates – starting with window rebuild		\$50,000
Lums Pond State Park	12	Boat ramp: replace ramp, parking		\$500,000
Bellevue State Park	12	Assessment and treatment (demo/repair) of stone walls along Philadelphia Pike		\$100,000
Cape Henlopen State Park	12	Day Camp accessibility to Chapel		\$150,000
Cape Henlopen State Park	12	Expand Park Office/Building to house Biden Center staff, storage for evidence locker and artifact storage	D	\$750,000
Wilmington State Park	12	ADA and family restroom improvements		\$750,000
Trap Pond State Park	12	Construction of a new Spray Ground at Trap Pond	P	\$1,500,000
Alapocas Run State Park	12	Pavilion across from Bancroft Mills bridge project. Pavilion upgrades and railing complete. Electric and restroom still needed	P	\$200,000
Indian River Marina	12	Pilings sandblasted, sealed, and pile jackets		\$800,000
Fort Delaware State Park	12	Pathway leveling on the Fort walkways. The Fort's granite walkways are extremely uneven with lots of tripping hazards and need to be reset		\$200,000

Management Unit Name	Score	Project Description	Progress Status	Preliminary Cost Estimate
White Clay Creek State Park	12	Niven House repairs for market rental. Structural repair, HVAC and interior modifications	P	\$150,000
Auburn Valley State Park	12	Two of the three restrooms are not ADA compliant and drain line for bathrooms is 1 inch		\$250,000
Fort Delaware State Park	12	Repair terreplein - address sink holes on top of Fort		\$500,000
Killens Pond State Park	12	Campground bathhouse Renovation		\$200,000
Killens Pond State Park	12	Campground "F" Loop power upgrades		\$130,000
Cape Henlopen State Park	12	Trails connecting gun pads	D	\$200,000
Delaware Seashore State Park	12	Improvements to South Inlet Campground	P	\$500,000
Delaware Seashore State Park	12	Seasonal Housing		\$750,000
Trap Pond State Park	11	Three fishing dock replacements in the campground on A, B & C. The current fishing docks are worn out and unstable		\$100,000
Cape Henlopen State Park	11	Cape Dorm restroom upgrades		\$100,000
Auburn Valley State Park	11	Oversee Farm new septic system and building renovations		\$750,000
Brandywine Creek State Park	11	Flint Woods: bus drop-off location includes parking from 2020 AMP		\$150,000
Trap Pond State Park	11	James Branch canoe/kayak launch at Hitch Pond Road		\$200,000
Fort Delaware State Park	11	Pavilion construction to be used for groups, lunches, school groups, and paranormal tours	D	\$350,000
Cape Henlopen State Park	11	ADA updates at the main beach bathhouse		\$400,000
Lums Pond State Park	10	Replacing the bridge between areas 1 & 2 (bridge #32). This has been identified as having weakness by an engineer. It is heavily used and very old		\$100,000
Trap Pond State Park	10	Upgrades to Campground D Loop		\$125,000
Delaware Seashore State Park	10	Mitchell House Road flooding repairs		\$100,000
Fort Delaware State Park	10	Investigation into potential boat landing sites on Pea Patch Island		\$550,000
Alapocas Run State Park	10	Weldin Road: Provide safe pedestrian crossing and sidewalks between lot D and Can-Do playground/athletic fields		\$100,000
Lums Pond State Park	10	Repair cracks in parking lots		\$50,000
Lums Pond State Park	10	Asphalt Repairs at the campground entrance road		\$200,000
Brandywine Creek State Park	10	Trail upgrades (water issues, markings, etc.) includes accessibility		\$45,000
Bellevue State Park	10	Bury 3-phase power lines near Figure 8 Barn		\$200,000
Cape Henlopen State Park	10	Gordons Pond; restrooms/showers		\$450,000
Brandywine Creek State Park	10	Maintenance road paving resurface. The maintenance road pavement has cracks and pot holes		\$300,000
Brandywine Creek State Park	10	Retaining wall behind house is bowing		\$100,000
Lums Pond State Park	10	Upgrade restrooms to make them ADA compliant		\$60,000
Cape Henlopen State Park	10	New beach bathhouse with larger capacity		\$1,500,000

Management Unit Name	Score	Project Description	Progress Status	Preliminary Cost Estimate
Fort Delaware State Park	10	Island pier: replace deck boards		\$200,000
Lums Pond State Park	10	Lums boat ramp courtesy dock	D	\$100,000
Fort Delaware State Park	10	Fort Delaware employee dock repairs - engineering and construction		\$300,000
Killens Pond State Park	10	Additional dump station		\$150,000
Killens Pond State Park	10	Waterpark bathhouse renovations		\$350,000
Killens Pond State Park	10	The boat rental dock needs replacement. The current boat dock is worn and does not meet accessibility requirements		\$100,000
Cape Henlopen State Park	9	Trail Plan from Main Beach to the Point		\$750,000
White Clay Creek State Park	9	Judge Morris Estate-Exterior repairs and painting: Wood shingle roof repairs, soffit repairs and painting, repair and painting of window frames, sills, shutters, doors, door frames. Vendor under contract		\$60,000
Bellevue State Park	9	Installation of a bike/pedestrian/cross country path parallel to Entrance Road and Maintenance/Garden access road		\$500,000
Brandywine Creek State Park	9	Hawk Watch Comfort Station.This is a large restroom facility in the park for special events and pavilion/picnic area rentals. Currently there is no way for wheelchair access to this restroom.		\$250,000
Trap Pond State Park	9	Boat ramp ADA dock		\$50,000
Brandywine Creek State Park	9	Design and construction of a proper kayak/canoe take out station at Thompsons Bridge on both North and South side. This would include a redesign of both an inclusion of ADA accessible take out on one side.		\$300,000
First State Heritage Park	9	Re-evaluate restroom and storage needs with ADA and site limitations		\$200,000
Lums Pond State Park	8	Upgrades to the old Sensory Trail by the nature center		\$50,000
Brandywine Creek State Park	8	Nature Center: upgrade restrooms to include outside access and add lab/classroom and ranger office; general office space		\$500,000
Lums Pond State Park	8	Addition to Park Office to improve accessibility and provide additional staff space		\$150,000
Trap Pond State Park	8	Nature center handicap spaces flood		\$75,000
Fort Delaware State Park	8	Create ADA access to 2nd and 3rd floor of Fort Delaware		\$300,000
Delaware Seashore State Park	8	Indian River Life Saving Station water/filtration - Look at upgrading septic/well/water to address brown water		\$50,000
Lums Pond State Park	8	Resurface tennis courts		\$50,000
Fox Point State Park	8	Pave phase II road and parking areas		\$300,000
Bellevue State Park	8	Park Office: ADA improvements to office door and ramp		\$100,000
Bellevue State Park	8	Addition of six lights in the main parking lot		\$60,000
Trap Pond State Park	8	Evaluate trails		\$100,000

Management Unit Name	Score	Project Description	Progress Status	Preliminary Cost Estimate
Lums Pond State Park	8	Paving of the entrance road from the park entrance to Area 1		\$750,000
White Clay Creek State Park	8	Carpenter Recreation Area- rebuild and relocate booth		\$85,000
Fox Point State Park	8	Fox Point parking lot lights are not operational. The inoperable parking lot lights are a security concern		\$75,000
White Clay Creek State Park	8	Paving of Wells Lane from Wedgewood Road to Wells barn		\$200,000
Trap Pond State Park	8	Enlarge Campground Entrance to accomodate larger RV's		\$100,000
Delaware Seashore State Park	8	Towers Ocean beach bathhouse - install cement board on exterior		\$100,000
Fort Delaware State Park	8	Island pier handrail: continue replacing handrail components		\$75,000
Wilmington State Park	8	Blue Ball Barn: courtyard - stone wall masonry repairs		\$60,000
Cape Henlopen State Park	8	Road and parking improvements		\$1,500,000
White Clay Creek State Park	8	Move power lines underground		\$150,000
Lums Pond State Park	8	Renovating restrooms for ADA compliance		\$60,000
Trap Pond State Park	8	C loop restroom refurbishing		\$225,000
Trap Pond State Park	8	Maintenance shop electric and computer access		\$60,000
Lums Pond State Park	8	Adding a new traffic lane from the office to the entrance booth and adjusting the lanes at the contact station for better flow and re-establishing a communicatins line between the office and the fee booth		\$75,000
Trap Pond State Park	8	Ramp and dock improvements		\$250,000
Trap Pond State Park	8	Bethesda Church storage building and overflow parking		\$50,000
Fort Delaware State Park	8	Evaluate repairs needed to the seawall		\$1,500,000
White Clay Creek State Park	8	Pomeroy trail resurfacing, address flooding issue first. Section is between Hopkins and Wedgewood Road		\$150,000
Bellevue State Park	8	Repair damage to bike path (Philadelphia Pike)		\$100,000
Fort Delaware State Park	8	Replace crane on dock, critical for operation of the park		\$45,000
Fox Point State Park	8	Removal		\$75,000
Lums Pond State Park	8	Demolish old water storage and treatment building		\$50,000
Trap Pond State Park	8	Boat ramp extension		\$75,000
Trap Pond State Park	8	Cypress Point restroom		\$100,000
Brandywine Zoo	8	Renovate and upgrade small restrooms (new heat system, fixtures, stall dividers). Convert to family restroom?		\$100,000
Cape Henlopen State Park	8	Chapel sewer line repair		\$50,000
Indian River Marina	8	Moving of the fuel dock to resolve fueling and maintenance concerns		\$300,000
Killens Pond State Park	8	Campground playground updates		\$200,000

Management Unit Name	Score	Project Description	Progress Status	Preliminary Cost Estimate
Fort Delaware State Park	8	Fort Delaware replacement of floating dock for Delafort - engineering and construction		\$300,000
First State Heritage Park	8	Upgrade infrastructure at John Bell House to provide year-round staffing on site		\$50,000
Cape Henlopen State Park	8	Improve traffic flow into and out of Cape Henlopen		\$500,000
Alapocas Run State Park	7	Alapocas maintenance shop rehab to programming/camp space		\$350,000
White Clay Creek State Park	7	Judge Morris: interior and exterior repairs and painting, finish floors	D	\$250,000
Brandywine Creek State Park	7	YCC building/spring house upgrades		\$100,000
Garrisons Lake	7	Event pavilion - construction underway	C	\$500,000
Cape Henlopen State Park	7	Cape youth camps I masonry repairs		\$150,000
Summit North	7	Summit north dredge site clearing - underway	D	\$500,000
Lums Pond State Park	7	Waste water treatment plant replacment		\$3,000,000
Brandywine Zoo	7	Zoo: implement phase II master plan		\$5,000,000
Statewide	7	Adding camper cabins to underutilized camping sites		\$600,000
Trap Pond State Park	6	Add shutters, repair siding and paint, repair ceiling, walls and then floors, restore pews		\$136,000
Fort Delaware State Park	6	Bake oven room restoration for increased programming use		\$150,000
Trap Pond State Park	6	Ranger office septic		\$75,000
Alapocas Run State Park	5	Weldin Ruins/pavilion picnic area		\$100,000
White Clay Creek State Park	5	Establish Day-Use parking lot and fee collection at Creek Road near Second Dam		\$100,000
Bellevue State Park	5	HVAC system upgrade for 2nd & 3rd floors		\$75,000
Holts Landing State Park	5	Explore relocating the kayak launch to the vicinity of the current boat launch. Rocks at the current location make it dangerous and difficult if not impossible to paddleboard		\$250,000
Cape Henlopen State Park	5	New Nature Center		\$4,000,000
Cape Henlopen State Park	5	Primitive area restroom		\$150,000
White Clay Creek State Park	5	New Park Office in Maxwell House		\$500,000
Trap Pond State Park	5	Cottages with dock at Trussum Pond property		\$500,000
Trap Pond State Park	5	Additional Cabins		\$650,000
White Clay Creek State Park	5	Install 10' X 20' Pavilion at Nature Center		\$50,000
Trap Pond State Park	5	Campground upgrades (D-E Loop)		\$200,000
Trap Pond State Park	5	Sports complex amenities		\$200,000
Wilmington State Park	5	Rentable pavilion		\$100,000
Killens Pond State Park	5	Two new water park features		\$60,000
Bellevue State Park	4	Asphalt/Epoxy overlay to fix floor		\$250,000
Bellevue State Park	4	Development of a signage plan for wayfinding signs		\$50,000
Lums Pond State Park	4	Amphitheather around campground		\$75,000
Cape Henlopen State Park	4	Cape dorm addition of HVAC		\$200,000
Trap Pond State Park	4	Evaluate the park office/campstore complex		\$400,000

Management Unit Name	Score	Project Description	Progress Status	Preliminary Cost Estimate
Lums Pond State Park	4	Adding a road to turn some existing sites into pull-through sites		\$50,000
Fort Delaware State Park	4	Rebuild historic muskrat shack in Port Penn		\$60,000
Bellevue State Park	4	New Pavilion to replace Pavilion 2 which does not have good access for rentals		\$175,000
Wilmington State Park	4	Blue Ball Barn: evaluate and implement plan for additional asphalt parking area(s)		\$250,000
Bellevue State Park	4	Cabana restroom renovation		\$125,000
Alapocas Run State Park	4	Extend water and electric to shop near 202 Water and Wastewater is still needed		\$250,000
Alapocas Run State Park	4	Front office expansion	P	\$60,000
Fort Delaware State Park	4	Fort Delaware coating/sealing metal roofs		\$100,000
Lums Pond State Park	4	Campground addition of improved primitive campgrounds and tent camping areas		\$75,000
Trap Pond State Park	4	Campground laundry facilities		\$75,000
Fort Delaware State Park	4	Historic restoration for doors inside the Fort		\$50,000
Indian River Marina	4	Add additional outdoor racks		\$500,000
Indian River Marina	4	Parking lot improvements. Projects include an evaluation of additional parking options and lighting		\$500,000
Wilmington State Park	3	Rockford band shell		\$50,000
White Clay Creek State Park	3	Replace/repair Niven pond outflow pipe		\$75,000
Brandywine Creek State Park	3	Nature play area		\$75,000
Delaware Seashore State Park	3	Phase III of the Assawoman Canal Trail		\$3,000,000
Delaware Seashore State Park	3	Improve Savages Ditch kayak launch		\$60,000
Trap Pond State Park	3	Construct an ADA accessible kayak launch at the boat house		\$50,000
Trap Pond State Park	3	Upgrade boat house facility		\$300,000
Wilmington State Park	3	Play area		\$75,000
Auburn Valley State Park	2	Evaluate parking expansion options at Yorklyn Bridge including partnering with neighbors at Snuff Mill businesses		\$600,000
Fox Point State Park	2	Pave bike path from railroad tracks to entrance		\$125,000
Auburn Valley State Park	2	Evaluate parking needs and reinforce surfacing at the event parking across from the Mansion		\$100,000
Auburn Valley State Park	2	Repair and potentially resurface trail that washed out during flood		\$100,000
Lums Pond State Park	2	Equestrian Center Pavilion and additional parking		\$200,000
Lums Pond State Park	2	Renovations and upgrades for the day camp building		\$50,000
Lums Pond State Park	2	Removing median from the area 2 parking lot to allow more parking spaces.		\$200,000
Lums Pond State Park	2	Provide wired data access to the camp store which can then be used for future needs of the proposed cabins		\$150,000
Delaware Seashore State Park	2	Seashore maintenance yard paving resurface. The paving has pot holes and cracking requires resurfacing		\$60,000

Management Unit Name	Score	Project Description	Progress Status	Preliminary Cost Estimate
White Clay Creek State Park	2	Wedgewood Road parking lot paving of entire parking lot		\$70,000
Lums Pond State Park	2	Adding a dock at the campground accessible by pontoon boat		\$75,000
Trap Pond State Park	2	Nature Center drop off circle		\$200,000
Trap Pond State Park	2	Add Wi-Fi to the campground		\$75,000
Fort Delaware State Park	2	Improvement of on-island visitor center including exhibits, signage, etc.		\$100,000
Bellevue State Park	2	Pole Building and open salt/sand/gravel shed for Maintenance Facility		\$50,000
Fort Delaware State Park	2	Ticket sales/gift shop: upgrade exterior as well as interior of island gift shop. Replaster island gift shop walls.		\$80,000
Lums Pond State Park	2	Boat rental building; new siding, roof, doors, interior & exterior lights and plumbing fixtures		\$55,000
Indian River Marina	2	Marina bulkhead investigation and repair	D	\$500,000
Bellevue State Park	2	Evaluate rusted/damaged/deteriorated steel/concrete fence for removal/replacement		\$300,000
Lums Pond State Park	2	Construction of a pondside nature center building		\$300,000
Auburn Valley State Park	2	Evaluate restroom options at Yorklyn Bridge pavilion		\$120,000
Bellevue State Park	2	Arts building: Install restrooms		\$75,000
Delaware Seashore State Park	2	Wi-Fi for campgrounds and Marina		\$150,000
Fort Delaware State Park	2	Blacksmith shop reconstruction		\$150,000
Wilmington State Park	2	Develop a sign plan. Design, manufacture and install. The Wilmington and Alapocas Run State Parks are in dire need of uniform and professional signage		\$75,000
Brandywine Creek State Park	2	Maintenance area: construct 4 bay pole shed		\$65,000
Lums Pond State Park	2	Maintenance shop, Nature Center and boat rental internet cabling		\$80,000
Holts Landing State Park	2	Staff housing Holts Landing		\$300,000
Brandywine Creek State Park	2	Parking is severely limited at 47 Adams Dam Road		\$60,000
Trap Pond State Park	2	Electrical upgrades		\$60,000
Lums Pond State Park	2	Update Area 4 parking lot		\$50,000
Trap Pond State Park	2	Tar and Chip Cypress Point parking lot and campground roads		\$100,000
Trap Pond State Park	2	Nature Center AC in restrooms		\$60,000
Lums Pond State Park	2	Adding restrooms, water, and a parking lot to the primitive youth area		\$100,000
Lums Pond State Park	2	Re-routing the Little Jersey Trail where it traverses the campground.		\$50,000
Wilmington State Park	2	Move existing fuel tank from former County maintenance yard to new Abessinio Stadium site		\$50,000
Fort Delaware State Park	2	Install stones along wall of Fort Delaware moat		\$200,000
Fort Delaware State Park	2	Dredge sediment from sluiceway		\$150,000

Management Unit Name	Score	Project Description	Progress Status	Preliminary Cost Estimate
Fort Delaware State Park	2	Secure, pump out water, and repair buckling wall		\$50,000
Indian River Marina	2	Address erosion behind Dry stack office near transformer		\$100,000
Garrisons Lake	2	This includes improvements to the sand traps, greens, and other playing elements		\$450,000
Killens Pond State Park	2	Bathhouse for G-Loop Camping area. Potential campground expansion could utilize facility too		\$350,000
White Clay Creek State Park	2	Judge Morris: finish exterior painting - vendor under contract		\$60,000
Wilmington State Park	1	Plan, design & develop additional on-site parking under the I-95 bridge from Stadium Drive to South Park Drive. Create additional on-site parking to be used by visitors to the Brandywine Zoo and Brandywine Park		\$500,000
Delaware Seashore State Park	1	Develop a small loop trail near the Indian River Life Saving Station		\$100,000
Fort Delaware State Park	1	New boat shed building		\$100,000
Wilmington State Park	1	Office display and interpretive displays		\$45,000
Fort Delaware State Park	1	Install boardwalk platform along Endicott		\$60,000
Bellevue State Park	0	Providing internet access to the Maintenance Shop and 651 Marsh Road residence		\$150,000
Brandywine Creek State Park	0	Remove Rockland Road Bio-Sun		\$40,000
Brandywine Zoo	0	Renovate the "town house" enclosures. Replace failing wood structures and add new mesh		\$150,000
Indian River Marina	0	Three-sided structure for maintenance and yard equipment storage		\$75,000
Killens Pond State Park	0	Enlarge park office		\$100,000
Alapocas Run State Park	0	Bathroom at Lot B - maintenance will be needed for pavilion/Weldin Ruins expansion		\$100,000
Statewide	0	Addition of central air conditioning to staff occupied park housing	C	\$500,000
Holts Landing State Park	0	Campground host sites and hook ups		\$250,000
Statewide	0	Intern/Staff Dorm Housing		\$500,000
Brandywine Creek State Park	0	Add internet to maintenance area for computer placement		\$150,000
Trap Pond State Park	0	ADA family restroom		\$75,000
TOTAL:				\$155,431,250

Nearly



\$53 million in state and local taxes were initiated by Delaware's state park system, including \$6.6 million in gross receipts tax, \$1.5 million in hotel taxes, \$4.7 million in income taxes, and \$9.5 million in property taxes.



Department of Natural Resources and Environmental Control
Division of Parks & Recreation
89 Kings Highway, Dover, DE 19901

Shawn M. Garvin, *Secretary*
Department of Natural Resources and Environmental Control

Raymond E. Bivens, *Director*
Division of Parks & Recreation

Ronald A. Breeding, *Chair*
Parks Advisory Council