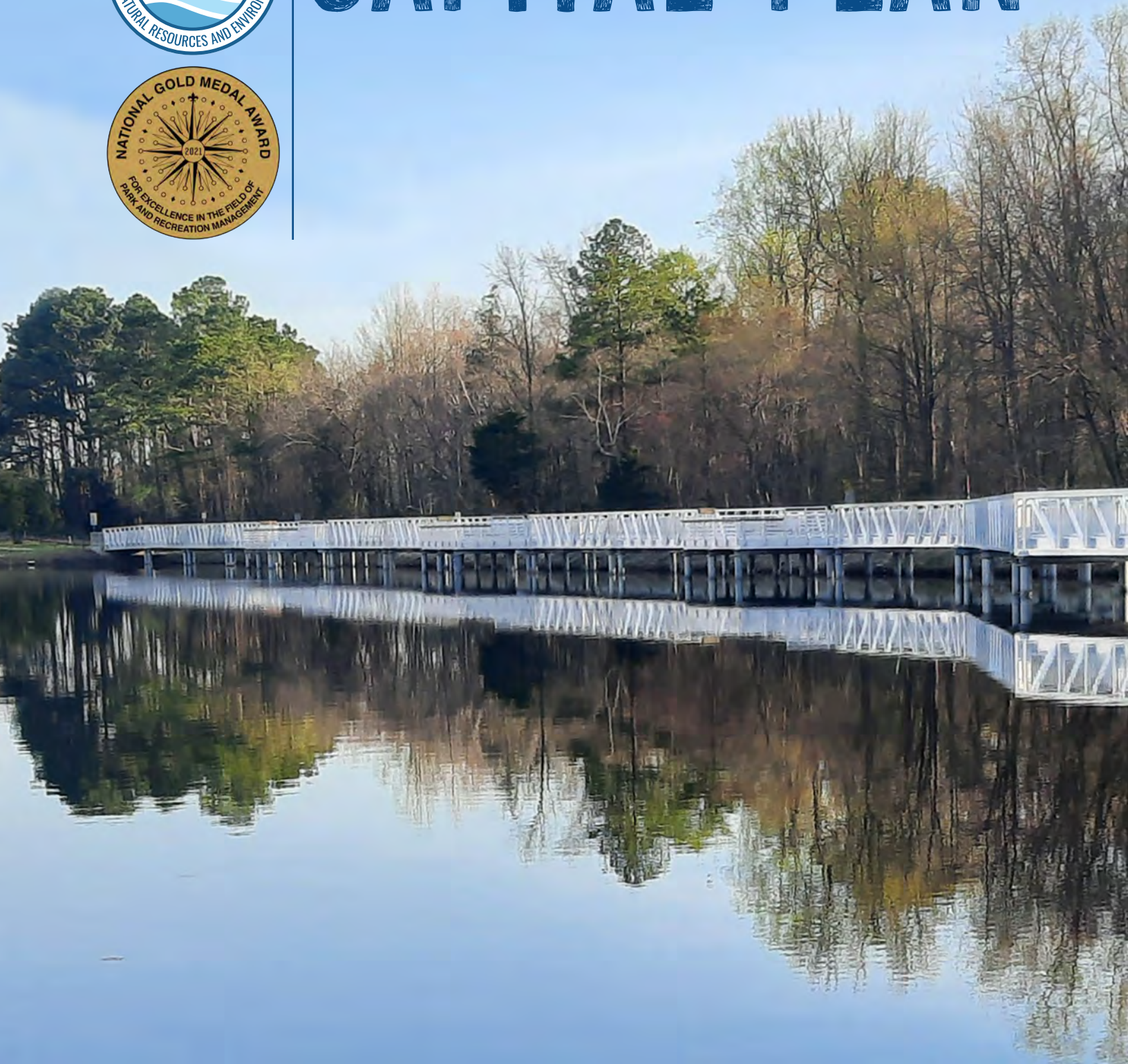


**DELAWARE
STATE
PARKS**



2022-2025 CAPITAL PLAN



CAPITAL PLAN CONTENTS

YOUR STATE PARKS

- 5 Parks and Preserves
- 6 Accessible to All

FUNDING THE PARKS

- 8 Capital Funds For Parks
- 9 Land and Water Conservation Fund
- 10 Statewide Pathway and Trail Funds
- 11 Recreational Trails Program
- 12 Outdoor Recreation, Parks and Trails Grant Program

INVESTMENTS IN OUR PARKS

- 13 New Castle County
- 17 Kent County
- 18 Sussex County
- 21 Preserving Delaware's Past
- 22 Partner/Friends Projects

PARK CAPITAL NEEDS

- 24 Top 15 Major Needs
- 27 Top Needs at Each Park

FY2021 CAPITAL PLAN

- 30 FY2023 Governor's Recommended Budget
- 31 Additional Capital Improvement Project Requests
- 33 Project Summary Chart
- 34 Planning, Design, and Construction Timeline

STATEWIDE PROJECT LIST

- 36 Statewide Projects



Tower 7 at Delaware Seashore State Park

YOUR STATE PARKS

The mission of Department of Natural Resources and Environmental Control's (DNREC) Division of Parks & Recreation is to provide Delaware's residents and visitors with safe and enjoyable recreational opportunities and open spaces, responsible stewardship of the lands and the cultural and natural resources that we have been entrusted to protect and manage, and resource-based interpretive and educational services.

PARKS, PRESERVES, AND ATTRACTIONS

The Division of Parks & Recreation operates and maintains 17 state parks in addition to related preserves and greenways throughout Delaware.

STATE PARKS:

Alapocas Run	Fort DuPont
Auburn Valley	Fox Point
Bellevue	Holts Landing
Brandywine Creek	Killens Pond
Cape Henlopen	Lums Pond
Delaware Seashore	Trap Pond
Fenwick Island	White Clay Creek
First State Heritage Park	Wilmington State Parks
Fort Delaware	

PRESERVES:


Angola Neck	Fork Branch
Auburn Heights	James Branch
Barnes Woods	Lums Pond Woods
Beach Plum Island	Murderkill River
Bellevue Woods	Nanticoke River
Brandywine Creek Valley	Pea Patch Island
Cape Henlopen	Red Clay Creek Valley
Cedar Creek	Rehoboth Bay Marshes
Doe Bridge	Thompson Island
Flint Woods	White Clay Creek Valley

ATTRACTIONS:

Brandywine Zoo
Deerfield Golf Course
Fort Miles Historic Area
Garrisons Lake
Golf Club
Killens Pond Water Park
Indian River Marina
Port Penn Interpretive Center
Summit North Marina



**DELAWARE
STATE PARKS
by the
Numbers:**

6.2 
million+
visitors

17 
Parks

26,888
Acres

633
Buildings

**Buildings
on Park Land**



Madagascar Exhibit
Brandywine Zoo

ACCESSIBLE TO ALL

Delaware State Parks provide recreation, nature, environmental and educational opportunities to all Delawareans. It is important that all people have the ability to enjoy our 17 parks and more than 26,000 acres of parkland. Each year, we update and improve our parks with this all-access vision in mind. In 2021, we added several amenities that will provide more access for individuals of all abilities.



Farm Lane Bridge at Auburn Valley State Park

Auburn Valley State Park

- Historic bridge constructed at Farm Lane allowing for improved accessibility
- Steam Museum renovation with accessible bathrooms and exhibit space fundraised and managed by the Friends of Auburn Heights

Cape Henlopen State Park

- Repairs to the fishing pier pilings to allow for the continued operation of the most heavily utilized fishing pier in the state. The pier offers accessible fishing and special tournaments.
- Fort Miles Artillery Park pathway paving that creates full accessibility to all gun pads and the northwest entrance of Battery 519.
- ADA pole showers installed at Gordons Pond
- Installation of mobility mats for accessible beach access
- New event space and parking for the Fort Miles Museum with accessible pathway and museum access



Auburn Valley State Park Steam Museum



Pier at Cape Henlopen State Park

Delaware Seashore State Park

- Installation of mobility mats for accessible beach access
- ADA Pole Showers installed at South Inlet

Fort Delaware State Park

- Accessible trail and viewing platform
- New pavilion with accessible trail

Fox Point State Park

- Bathroom improvements for accessibility

Garrison Lake Golf Course

- Event pavilion for tournaments, group outings and special events

Killens Pond State Park

- Elevated boardwalk running from the boat rental area to the boat ramp including accessible fishing opportunities from the boardwalk

Lums Pond State Park

- Sensory Trail re-route and resurfacing

Trap Pond State Park

- Resurfacing of the Bob Trail

White Clay Creek State Park

- Lighting of the Pomeroy Trail allowing for improved visibility and safety
- Repaving of the Wendell Castle Trail

Wilmington State Parks

- Improvements to playground to increase accessibility



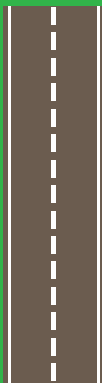
New event pavilion at Garrison Lake Golf Club



Wendell Castle Trail at White Clay Creek State Park



Delaware State Parks maintain **17.8 Miles of Ocean Beach** and **42.7 Miles of Road**



FUNDING THE PARKS

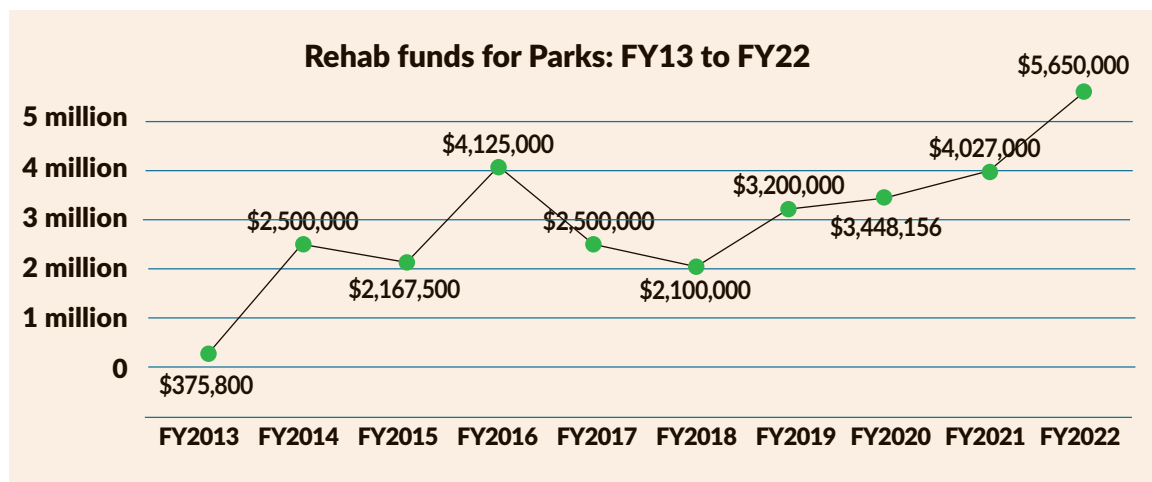
DNREC's Division of Parks & Recreation has an operating budget that is roughly 65% self-funded, which is unique within Delaware government.

Capital expenses come from various sources:

- Bond bill
- User fees
- Federal grants
- Grants and donations
- Community Transportation Funds
- Public/private partnerships
- Loans
- Trust funds

The Division has a \$207,960,656 capital backlog on projects such as aging infrastructure, roads, buildings, barns, historic structures, piers, sewer systems, as well as new projects like cabins, nature centers, and park offices. In addition, we are responsible for properties on or eligible for the National Register of Historic Places.

CAPITAL FUNDS FOR PARKS



FY12 to FY21 Average: \$3,354,161



New Pathways at Fort Miles, Cape Henlopen State Park

THE LAND AND WATER CONSERVATION FUND

The Land and Water Conservation Fund (LWCF) was created by Congress in 1965 to preserve, create and ensure public access to outdoor recreation facilities in order to strengthen the health of all Americans. **Over the past 55 years, the LWCF State Assistance Program, administered by the National Park Service, has provided over \$4.8 billion to states and local communities to fund more than 42,000 outdoor recreational projects across every state and in 98% of counties in America.** Congress funds LWCF with revenues from oil and gas leasing from the Outer Continental Shelf as a way to offset resource consumption with preserving the environment and promoting health through outdoor recreation. No taxpayer funds are used for the program. States can request LWCF funds for recreational planning, acquiring parkland and developing outdoor recreational facilities up to 50% of the costs. States are required to update their Statewide Comprehensive Outdoor Recreation Plan (SCORP) that sets the outdoor recreation priorities and goals for each specific state.

FY2017 = \$904,007
FY2018 = \$1,548,996
FY2019 = \$1,635,930
FY2020 = \$2,019,540
FY2021 = \$2,688,461

LWCF funds recent projects

- Cape Henlopen campground improvements – cabins, contact station, bathhouse and other campground improvements **\$2,774,519**
- Bellevue road paving **\$162,000**
- Brandywine Zoo Madagascar exhibit **\$1,760,221**
- Lums Pond Recreation Area 1 paving **\$500,000**
- Fort Delaware dock and tram improvements **\$2,045,425**

Future projects

- Lums Pond cabin complex
- Coastal Region parking paving
- Herring Point bathroom



Fort Delaware State Park tram path



Lums Pond Recreation Area 1 Paving

STATEWIDE PATHWAY AND TRAIL FUNDS

Statewide Pathway and Trail Funds are essential for Federal Match (80 federal/20 state) and for necessary reroutes, maintenance, and any new construction like the Assawoman Canal underpass and accessible kayak launch and the Killens Pond Elevated Trail Project.

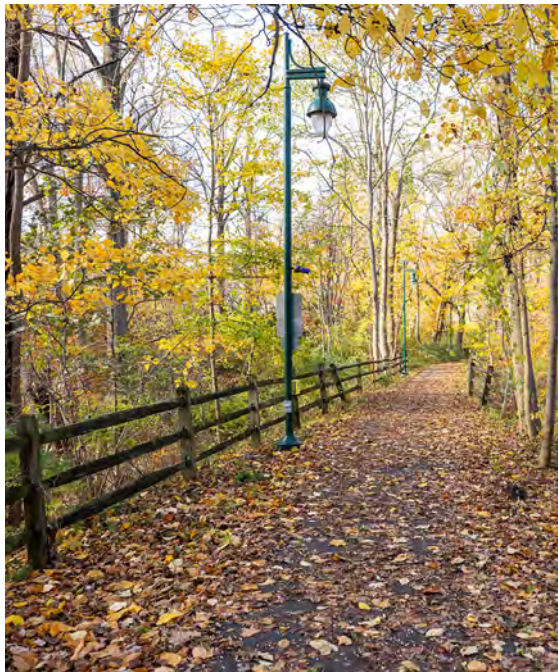
Ten-year total: \$16,500,000

\$3,500,000 as pass through funds for the Fort DuPont Trail, the Newport Trail and a Feasibility Bike Trail connecting Glasgow Park to Iron Hill Park

Delaware State Parks has **17.8 Miles of Sidewalk**

and

168.5 Miles of Trail



Pomeroy Trail at White Clay Creek State Park

Projects Completed

- Killens Pond Elevated Boardwalk
Cost Estimate: \$2,033,163
- Pomeroy Trail Lighting
Cost: \$97,752
- Wendell Cassel Trail Paving
Cost: \$49,500
- Fort Miles Gun Park Pathway
Cost: \$199,200
- Fort Delaware Barracks Trail and Overlook
Cost: \$220,000

Projects Under Construction/ Planning

- Cape Henlopen-Wolfe Neck Loop Trail
Cost Estimate: \$1,750,000
- Brandywine Trail Paving
Cost Estimate: \$300,000

Future Projects

- Auburn Valley Snuff Mill Connector Trail
- Lums Pond Buck Jersey Trail
- Lums Pond Bridge Replacement
- Yorklyn Trail
- Cape Henlopen Entrance-Georgetown-Lewes Trail
- Cape Henlopen Herring Point Trailhead Bathroom
- Water Trail Access for Pond Parks



Fort Miles Gun Park Pathway, Cape Henlopen State Park

FEDERAL RECREATIONAL TRAILS PROGRAM

The Federal Recreational Trails Program (RTP) has been instrumental in funding trail planning, development, education, and maintenance activities across the state of Delaware for more than 25 years. Projects include water and land trails within state, county, and municipal parks. Statewide funds are utilized as a match for RTP.

Eligible Projects

- Maintenance and restoration of existing trails
- Development and rehabilitation of trailside and trailhead facilities and trail linkages
- Purchase and lease of trail construction and maintenance equipment
- Construction of new trails (with restrictions for new trails on federal lands)
- Acquisition of easements or property for trails
- Assessment of trail conditions for accessibility and maintenance
- Development and dissemination of publications and operation of educational programs to promote safety and environmental protection related to trails, including supporting non-law enforcement trail safety and trail use monitoring patrol programs, and providing trail-related training (limited to 5% of a state's funds)
- State administrative costs related to this program (limited to 7% of a state's funds)

RTP is a matching (80 federal/20 state) program providing investments for Delawareans and millions of visitors to get outdoors and exercise with their children and families. Since 1991, Delaware has funded more than 162 projects totaling more than \$17,000,000. The last yearly apportionments are as follows:

FY2017 = \$896,623	FY2019 = \$896,623	FY2021 = \$896,623
FY2018 = \$896,623	FY2020 = \$896,623	FY2022 = \$896,623



Killens Pond State Park elevated boardwalk



In 1991, the National Recreational Trails Fund Act was passed. The Recreational Trails Program (RTP) is an Assistance program of the U.S. Department of Transportation's Federal Highway Administration. The RTP provides funds to states to develop and maintain recreational trails and trail-related facilities for motorized and non-motorized recreational trail uses.

OUTDOOR RECREATION PARKS AND TRAILS GRANT PROGRAM

Average funding – \$1 million annually



In 3 years:

33 playgrounds,
16 trail improvements,
2 land acquisitions

As a way to assist the recreational needs of municipalities and counties, DNREC administers the Outdoor Recreation, Parks and Trails (ORPT) grant program with a similar mission to provide needed close-to-home outdoor recreation opportunities. The ORPT is a matching grant program assisting with public parkland acquisition and outdoor recreation facility development in Delaware. The Program was established in 1986 with annual deposits from real estate transfer tax into the Delaware Land & Water Conservation Trust Fund. Trust-generated income is used to fund the ORPT Program. **Since 1988 when the first grants were awarded, the ORPT Program has provided over \$31 million in matching grant assistance to eligible local, county and state governments throughout Delaware.**

- ORPT assistance is available for the purchase of land for new parks, conservation areas or additions to existing parkland. Funds may also be applied to the development of playgrounds, ballfields, trails, picnic pavilions, and other active outdoor recreation facilities and supporting amenities.
- To date, the program has disbursed funds to nearly **75%** of municipalities and all county governments in Delaware. An additional **19** proposals are under consideration for the 2022 grant cycle.
- The Division introduced changes to the program allowing a higher level of match for projects located within highly underserved communities for the 2021/2022 grant cycle.



New playground dedication in Laurel, Delaware



INVESTMENTS IN OUR PARKS

This past year has seen the completion of many projects that will enhance visitor experiences and strengthen our parks for years to come. The following are examples from throughout the park system.

NEW CASTLE COUNTY

COMPLETED

Statewide, the Division completed **\$7,142,336** in Capital Projects with Delaware-based companies winning 71% of the bids in FY 2021

- **Auburn Valley State Park Museum Expansion**

The Friends of Auburn Heights successfully fundraised and built an addition to the Auburn Valley Steam Museum for improved service and accessibility.

Project Cost: \$1,100,000



Museum expansion at Auburn Valley State Park

- **Auburn Valley State Park Historic Bridge**

The Farmlane Bridge at Auburn Valley was installed, making this the second of three historic bridges constructed on the property. The Bridge allows for improved access for residents and park users.

Project Cost: \$1,760,532



Farmlane Bridge at Auburn Valley State Park

- **Fort Delaware State Park Improvements**

The Division completed the largest investment in the history of Fort Delaware, which consisted of repairs and resurfacing of the tram path, resurfacing of the trail to the overlook, and a new overlook, maintenance building and pavilion.

Project Cost: \$4,987,896

- **Paving Area 1 at Lums Pond State Park**

The Area 1 parking lot at Lums Pond State Park was completely demolished and repaved with proper base to eliminate cracking and potholes.

Project Cost: \$52,714



Lums Pond State Park parking lot at Area 1

- **Trail Improvements at White Clay Creek State Park**

The Division added lighting to an area of the Pomeroy Trail for improved safety, completed several re-routes, and repaired a section of the Wendell Castle Trail.

Project Cost: \$188,536

Delaware State Parks has **13**



Park Offices

32



Pavilions



18

Playgrounds

UNDER CONSTRUCTION

- **Brandywine Zoo Animal Support Building**

The Animal Support Building construction provides improved veterinary services, keeper space, and quarantine areas for animal checkups and new animals to the zoo.

Project Cost: \$4,589,406



Construction of Brandywine Zoo Animal Support Building

- **Auburn Valley State Park Force Main and Pump Station**

A new sewer pump station and improvements to the force main are under construction on Yorklyn Road. The station will service new amenities and the existing county pump station in the area.

Project Cost: \$3,841,250

- **Summit North Dredge Area Improvements**

The Summit North Marina needs dredge work with the spoil site located north of the marina. To remain in compliance with the U.S. Army Corp of Engineers, the site needs improvements to allow for additional dredging capabilities.

Project Cost: \$825,000



Spoil site for Summit North Marina dredge work

- **Percheron Barn Stabilization at Bellevue State Park**

The Percheron Barn at Bellevue State Park will be stabilized to prevent the walls from bowing outward and causing additional structural damage. Once finished, roof repairs and new shingles will be completed.

Project Cost: \$235,000

- **Thompson Station Bathroom**

A new CXT bathroom is being fabricated off site and will be delivered in the spring for installation. This will take the place of the existing "closed" composting bathrooms and portable bathrooms.

Project Cost: \$250,000

PLANNING/DESIGN

- **H. Fletcher Brown Improvements at Wilmington State Parks**

H. Fletcher Brown will see improvements to the concrete steps and surrounding area to allow the site to reopen to the public. The site has been closed for more than a year due to the condition of the steps.

Project Cost: \$1,100,000



H. Fletcher Brown Improvements at Wilmington State Parks

- **Boat Ramp Courtesy Dock at Lums Pond State Park**

To improve the experience and expedite the launching of bass boats at Lums Pond, a popular destination for boaters throughout the summer and fall, the Division is planning for a courtesy dock with two launching ramps that will allow for boat tie offs and users to access their boats in a quick, safe manner.

Project Cost: \$242,000

- **Delaware Greenway Steps to the Swinging Bridge at Wilmington State Parks**

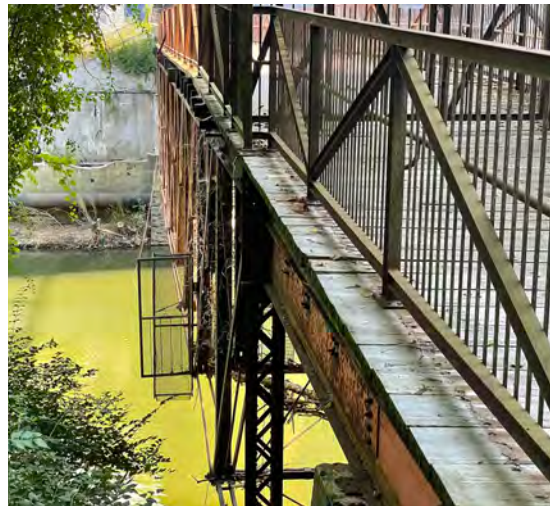
The Division is preparing plans for steps that will lead to a safe crossing closer to the alignment of the Swinging Bridge. The lack of a more direct connection between the Delaware Greenways and the Swinging Bridge has led to cut-through paths, safety concerns and erosion.

Project Cost: \$200,000

- **Bancroft Bridge**

The Bancroft Bridge has been closed due to damage from a flood event that caused structural damage. The Division has ordered a feasibility study to evaluate the path forward: repair of the existing bridge, use of a different historic bridge or fabrication of a new bridge.

Project Cost: \$1,500,000



Damage to the Bancroft Bridge

- **North Park Drive Sidewalk Repair**

The sidewalk between the Brandywine Zoo and Brandywine Park is closed due to damage. Planning is underway to replace the curb, walkway and fencing associated with the project.

Project Cost: \$150,000

- **Benge Road Pump Station**

The pump station adjacent to the papermill at Auburn Valley needs repair. This will manage the waste for Auburn Heights and lead to the new regional pump station.

Project Cost: \$350,000

We
Manage

104



Zoo
Animals



Equestrian
Centers



Cross-Country
Courses

17
Sports Fields



- **School House Renovation at Bellevue State Park**

The Mt. Pleasant School House exterior has been renovated in coordination with and support of the Friends of Bellevue State Parks. The planning for the interior construction and interpretation is underway.

Project Cost: \$750,000

- **Nature Center at White Clay Creek State Park**

The planning of a new nature center at White Clay has begun. The new facility will allow for year-round programming, improved amenities, increased parking, and new interpretive elements to host school groups, camps, and the public.

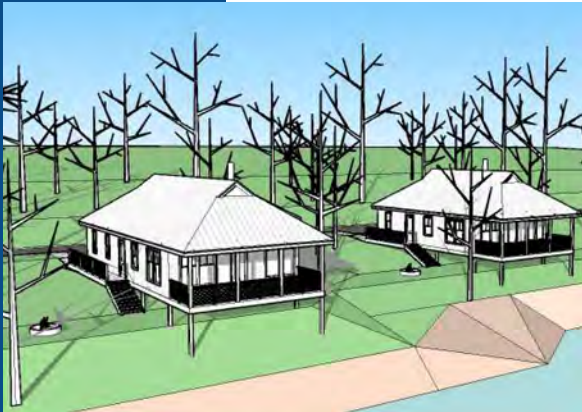
Project Cost: \$4,500,000

- **Bellevue State Park Track Repair**

The track surface has drainage and surface challenges that are being addressed through planning for improved grading and resurfacing.

Project Cost: \$850,000

Lums Pond State Park camping cabins rendering



- **Cabins at Lums Pond State Park**

A new cabin complex at Lums Pond Campground is being planned. Pending available funds, the complex could include up to 14 two- or three-bedroom cabins with bathrooms and kitchens.

Project Cost: \$3,000,000

- **Zoo Entrance and Flamingo Exhibit**

The Delaware Zoological Society is fundraising for a new Brandywine Zoo entrance and flamingo exhibit. Planning is underway.

Project Cost: \$5,000,000

Architectural rendering of the proposed Flamingo Exhibit at Brandywine Zoo



KENT COUNTY

Delaware State Parks operates



COMPLETED

- **Garrisons Lake Event Pavilion**

The Division completed construction of a new pavilion at Garrisons Lake Golf Course. The pavilion will attract new business by providing event space for golf outings, tournaments and fundraisers.

Project Cost: \$82,348

- **Killens Pond Elevated Boardwalk**

The elevated boardwalk trail will run from the boat ramp to the boat rental area. This stretch of the trail, which requires visitors to walk on the shoulder of the road, has been the subject of major complaints from trail users. The trail will divert pedestrians away from the road and take them across the water and spillway, creating a unique experience for walkers, bikers, joggers, and anglers.

Project Cost: \$2,033,163



Elevated boardwalk at Killens Pond State Park

- **Garrisons Lake Golf Course Drainage at Hole 7**

The Division repaired a critical drainage issue at hole 7 that created damage to the golf cart path and areas of the fairway.

Project Cost: \$45,000

- **Cart Path Repairs at Garrisons Lake Golf Course**

The Division took a step toward making needed improvements to the cart paths at the golf course by removing and repaving the most distressed sections this year. Upkeep and replacement of deteriorated sections will be performed annually.

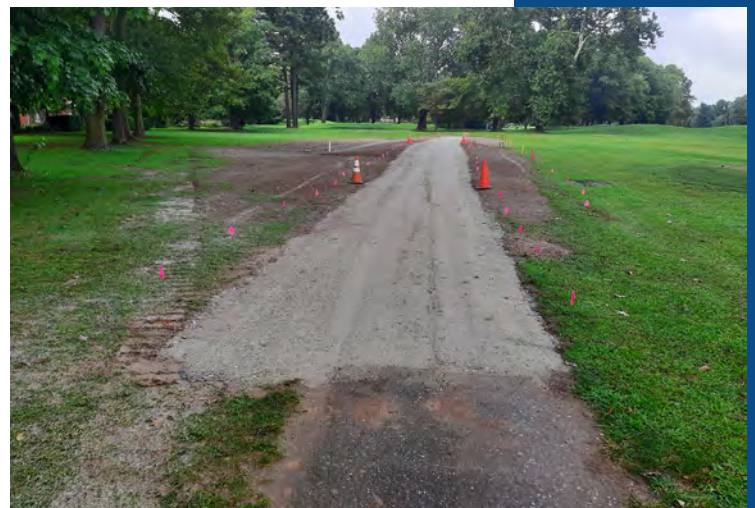
Project Cost: \$85,000

PLANNING/DESIGN

- **Garrisons Lake Golf Course Clubhouse, Cart Barn, and Cart Path Renovations**

Planning has begun for a new clubhouse that will host the day-to-day operations, golf store and dining area to hold events and fundraisers or allow golfers to enjoy a meal after their round. The clubhouse will also include a deck area that will lead to the new pavilion. A new cart barn will house all the golf carts and be equipped with chargers to convert the carts to electric. The cart path renovation will continue to upgrade additional paths through repaving, widening and improved drainage.

Project Cost: \$1,500,000



Cart path and drainage hole at Garrisons Lake Golf Course

- **Killens Pond State Park Boat Rental and Boat Ramp Parking**

Planning has begun for a new parking lot and boat ramp at the Killens Pond Boat Rental area that will allow additional space for trailers, parking for boat rental and improved site lines along Killens Pond Road.

Project Cost: \$600,000

- **Garrisons Lake Golf Course Bunker**

Staff have begun work on the sand bunkers to test different techniques for best management practices and the Division is in the process of planning the restoration/repair of the remaining bunkers.

Project Cost: \$450,000

- **John Bell House Bathroom at First State Heritage Park**

Planning has begun to construct a bathroom for program participants behind the John Bell House, managed by First State Heritage Park.

Project Cost: \$200,000

SUSSEX COUNTY

COMPLETED

- **Fishing Pier Repairs at Cape Henlopen State Park**

The park's pier is a World War II structure that requires regular repairs to the pilings to maintain its safety and integrity. The pier has an annual evaluation and repairs are done prior to each operating season as needed. In 2020, 25 pilings needed repairs.

Project Cost: \$421,950

- **Tower 7 Roof Repair at Cape Henlopen State Park**

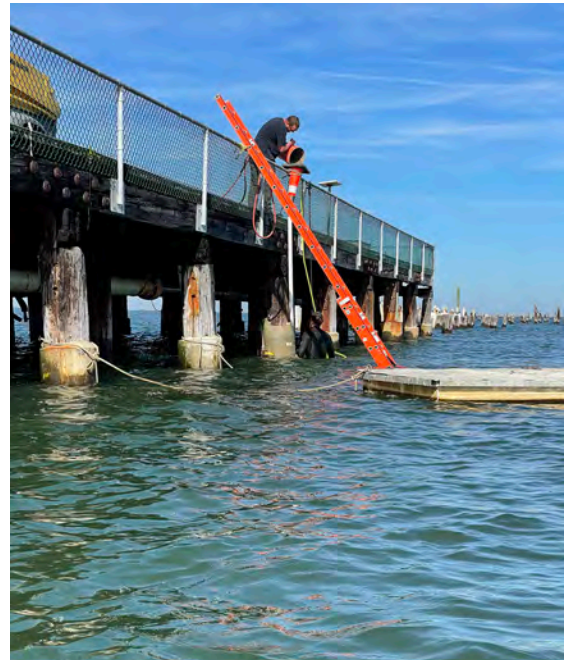
The membrane on the top of Tower 7 at Cape Henlopen needs a replacement. The Division is in the process of scheduling the work while the tower is closed to the public.

Project Cost: \$28,809

- **Fort Miles Artillery Park Pathway at Cape Henlopen State Park**

Fort Miles artillery park pathway construction will begin in the spring to align the pathways more effectively and meet ADA requirements.

Project cost: \$208,389



Cape Henlopen State Park Fishing Pier



Fort Miles Park Pathways, Cape Henlopen State Park

3 yurts

31 Cabins

824 Campsites

12 Cottages

In the past 5 years, the Division has seen a **137% increase in camping and cabin nights booked.**

- **Trail Resurfacing on the Bob Trail at Trap Pond State Park**

The Division's trail crew resurfaced the entire length of the Bob Trail at Trap Pond, including areas of regrading.

Project Cost: \$50,000

Delaware
State Parks
Manages

34



Restrooms

and

17



Bathhouses

UNDER CONSTRUCTION

- **Biden Environmental Education Training Center at Cape Henlopen State Park**

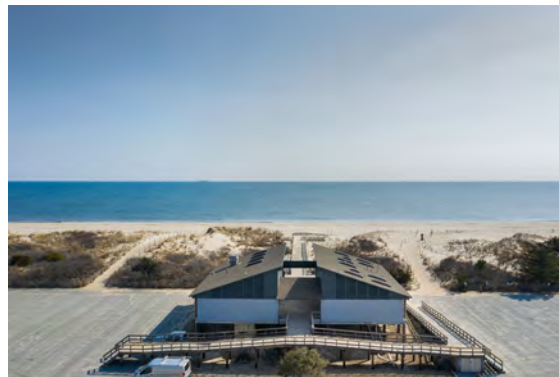
Planning to rehabilitate the Biden Environmental Education Training Center is underway, including addressing all safety and accessibility concerns and adding conference space and overnight accommodations.

Project Cost: \$11,500,000

- **Tower 3 Restoration at Cape Henlopen State Park**

In partnership with the Delaware Seashore Preservation Foundation, Tower 3 in Delaware Seashore State Park is under rehabilitative construction to create access to its top. The project includes interpretive elements, restoration of interior elements and new stairs to access the top.

Project Cost: \$1,100,000



View from Tower 3 at Cape Henlopen State Park

PLANNING/DESIGN

- **Cape Henlopen State Park Sewer System**

The Division is working on a plan with the City of Lewes that would include replacement of the park's pump stations, lift stations and main pipes, as well as to determine an annual operating expense.

Project Cost: \$5,500,000 if the Division does not tie into Lewes.

- **Wolfe Neck Trail at Cape Henlopen State Park**

The Division is planning a six-mile single-track trail at the Wolfe Neck area of Cape Henlopen State Park. The trail will also include connection to a canal overlook and will connect with the Junction Breakwater Trail. This project is being undertaken in cooperation with Sussex County as part of a new wastewater irrigation process that will allow for increased public access and a new bathroom facility in the area.

Project Cost: \$1,750,000

- **Paving the Coastal Region**

The Division is in the process of planning and coordinating efforts to repave critical parking lots in the coastal region, including the Cape Henlopen main beach parking and Towers Ocean in Delaware Seashore.

Project cost: \$1,700,000



Biden
Enviromental
Training Center, Cape
Henlopen State Park



Parking lot at Fenwick Island State Park

- **Fenwick Island State Park Improvements**

Planning for park improvements includes a secondary egress, amenity and parking upgrades, and queuing area and dune crossing improvements.

Project Cost: \$10,000,000

- **Dry Stack Roof Replacement at the Indian River Marina**

The Indian River Marina Dry Stack building roof requires repairs and will be put out to bid in the fall of 2022 for a winter 2022/2023 repair.

Project Cost: \$1,300,000



Boardwalk repair at Fenwick Island State Park

- **Cape Henlopen State Park Office and Entrance Improvements**

Planning has begun for a new park office at Cape Henlopen to handle the demand of sales, parking, and staff offices. The improvements also include trail connectivity and improved traffic patterns around the entrance/exit of the park.

Project Cost: \$6,500,000

- **Thompson Island Stabilization at Delaware Seashore State Park**

In partnership with the Center for Inland Bays, the Division is evaluating the shoreline along the island to minimize erosion and rebuild the island to protect the natural and cultural resources of the site.

Project Cost: \$500,000

- **Fort Miles Museum and Historic Area at Cape Henlopen State Park**

In partnership with the Fort Miles Historical Association and the Fort Miles Museum Board, the Division is planning the design and interpretive elements for Battery 519 and the Visitor Center associated with the Fort Miles Museum and Historic Area.

Project Cost: \$10,000,000

- **Spray Park at Trap Pond State Park**

The Division has completed preliminary planning around the addition of a spray park within Trap Pond to allow visitors the opportunity to cool down in the summer months.

Project Cost: \$1,500,000

Delaware State Parks has

7



Boat Ramps

and

2



Marinas

PRESERVING DELAWARE'S PAST

Delaware State Parks is honored to manage more historic structures than any other entity in the State of Delaware. These structures range in variety and chronology; from 18th century farmhouses and Victorian era places of worship, to military forts dating from the Civil War and World War II. Hundreds of archaeological sites in State Parks provide insight into how past generations of Delawareans lived. As stewards, Delaware State Parks maintains these historic places for visitor employment.

The Division invested over **\$1,075,677** in Delaware's cultural and historical sites in 2021.

Alapocas Run State Park

- Blue Ball Barn window work
- Blue Ball Barn exterior tile and concrete work
- Blue Ball Barn window tinting to preserve the folk art collection
- Bird-Husbands House exterior restoration and painting
- Blue Ball Barn stone wall repairs

Auburn Valley State Park

- Repairs to Oversee Dam
- Farmlane Bridge installation
- Repaired the race along the Red Clay Creek

Bellevue State Park

- Cauffiel Barn roof repair
- Mt. Pleasant stone wall repair
- Cauffiel tower renovation
- Bellevue Hall hallway renovation

Brandywine Zoo

- Pointing and stabilizing stonework in the historic animal exhibits

Brandywine Creek State Park

- Wilson's Run Bridge abutment repairs
- Stone wall repairs

Cape Henlopen State Park

- Youth Camp III siding
- Masonry work
- Fishing pier piling repair
- Wolfe Neck area archaeology survey
- Tower 7 roof membrane repair

First State Heritage Park

- Archaeology survey

Fort Delaware State Park

- Restoration of original windows
- Repointed brick work around the visitor center
- Repointed the archway over the tool room
- Reset the granite stone around the tool room

White Clay Creek State Park

- Rankin House roof repair
- Lamborn boathouse/milk house roof repair
- Lamborn house clean up

Wilmington State Parks

- H. Fletcher Brown wall repair



Repair of wall at Blue Ball Barn, Wilmington State Parks



Wilson's Run Bridge

9 

Nature Centers
/Museums

240+



Historic
Buildings

15 
Cemeteries

FRIENDS AND PARTNERS

Friends of Delaware State Parks

Friends groups are independent, non-profit organizations whose members are dedicated to assisting a particular park: helping with special events and programs, park maintenance, planning, fundraising, staffing the nature centers, and advocating for the parks. The Division has 16 recognized Friends groups statewide.

Partners

The Division works closely to develop strong private-public partnerships to further the Division's mission and improve visitor experiences. 17 businesses served as concessionaires in the parks in Fiscal Year 2021, providing food, experiences, and rental equipment for park visitors.

The partners and Friends, in coordination with the Division invested \$2,752,334 in improvements to Delaware's natural/cultural resources and park amenities.

FRIENDS AND PARTNER CONTRIBUTIONS TO THE STATE OF DELAWARE

● Friends of Auburn Heights Museum Addition

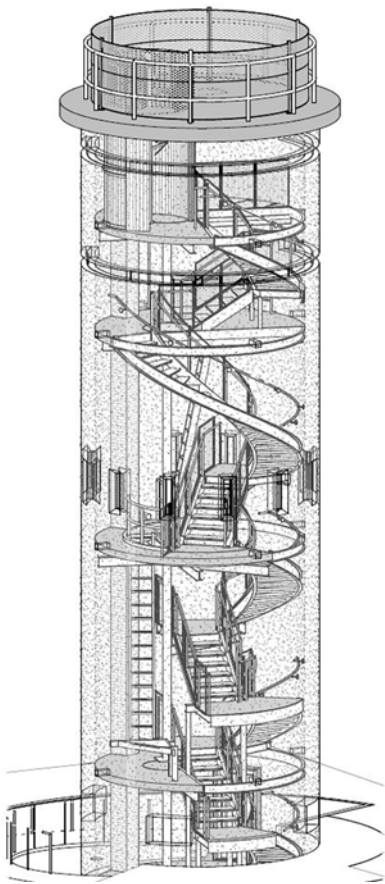
Working with the Division, the Friends of Auburn Heights fundraised and constructed a museum addition that improves the space for exhibiting the collection and adds a bathroom facility, along with improved interior and exterior space and design.

● Friends of Bellevue Mount Pleasant Schoolhouse Restoration

Working with the Friends of Bellevue, the Division completed work on the restoration of the Mount Pleasant Schoolhouse exterior including removing the addition on the back of the existing structure, roof repair, and repointing and stabilizing the structure. The Division and Friends are in the process of restoring the interior and developing interpretive plans.

● Delaware Seashore Preservation Foundation and Fort Miles Historical Association Tower 3 Renovation and Rehab

Working with the Delaware Seashore Preservation Foundation and the Fort Miles Historical Association, the Division is renovating and rehabbing Tower 3 in Delaware Seashore State Park. The work completed to this point includes lighting the tower at night, cleaning the exterior and interior of the tower, excavating down to the door opening, adding a ramp and new door to allow access, and replacing the windows on the bottom level. The next phase is under construction and includes interior stairs and access to the top for a first-class view.



Interior rendering of Tower 3 at Delaware Seashore State Park



Restored Tower 3 at Delaware Seashore State Park

- **Delaware Zoological Society Front Entrance and Flamingo Exhibit**

The Delaware Zoological Society, in partnership with the Division, has fundraised for the planning and construction documents for a new front entrance and flamingo exhibit. The Society has embarked on a capital campaign to fundraise the necessary money for the next phase of construction.



Fitness Station at Wilmington State Parks

- **Friends of Wilmington State Parks Fitness Station Upgrades**

The Friends of Wilmington State Parks funded four new fitness stations placed in Brandywine Park to upgrade and improve existing stations.

- **Four Winds Hospitality**

Four Winds Hospitality completed numerous improvements at both Garrison Lake and Deerfield Golf Courses. Improvements included restoration of seven tee areas, grass and bunker renovations, replacement of range tees, and bathroom renovations.

- **Go Ape Adventure Course**

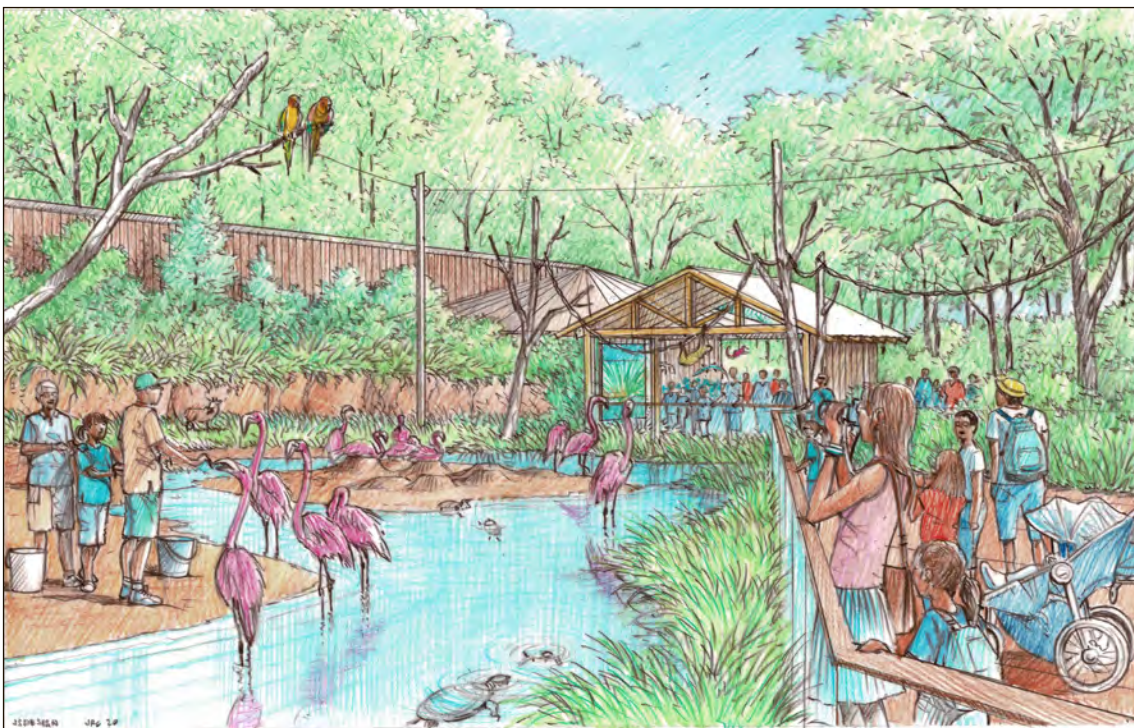
Go Ape at Lums pond converted to a continuous belay system for the entire course.

- **Wellspring Farm Outdoor Lighting**

Wellspring Farm, an equestrian concessionaire in Bellevue State Park, paid and installed new LED light fixtures to the exterior of the facility for improved safety.

- **Jeffrey Miller Group Bellevue Mansion and Cauffiel House Improvements**

The concessionaire at Bellevue State Park continues to restore and renovate the mansion and Cauffiel property with barn roof repair, Cauffiel Tower roof and siding repair and renovations on the third floor of the Bellevue Mansion.



Flamingo Exhibit Rendering, Brandywine Zoo

PARK CAPITAL NEEDS

CAPITAL PROJECT LIST WITH TOP 15 MAJOR NEEDS

The TOP 15 MAJOR NEEDS on the Delaware State Parks Capital Project List have a high safety concern or legal/regulatory compliance.

SCORING EXAMPLE

Scoring of Fenwick Island:

- 15** High Safety Concern
- +**
- 7** Continuation (project underway)
- +**
- 6** High Property Preservation
- +**
- 5** Leverage Federal Funds/Partnership
- +**
- 4** Revenue Impact
- +**
- 1** Recreational

= **38** Total Score out of possible **42**

1

FENWICK ISLAND

Parking lot expansion, amenity upgrades, drop-off for shuttles, bathroom renovations, and secondary egress.

Score: 38

\$10,000,000

2

WILMINGTON STATE PARKS

H. Fletcher Brown Park renovation of concrete stairs and structures, redesign of existing park layout, pathways, and access.

Score: 35

\$1,100,000

3

CAPE HENLOPEN

Sewer Plant replacement and upgrades, coordination with City of Lewes is underway. Cost if the park is required to maintain and replace existing septic fields.

Score: 32

\$5,500,000

4

CAPE HENLOPEN

Biden Environmental Education Training Center renovations, planning is complete. \$6,500,000 appropriated in prior Fiscal Year.

Score: 32

\$5,000,000
Gov. Rec. Budget



Fenwick Island State Park

5

BELLEVUE

Percheron Barn structural and roof repairs.

Score: 29

\$235,000

6

GARRISONS LAKE

Addition of Cart Barn, Clubhouse and renovation of Cart Paths.

Score: 29

\$1,500,000



Lovering Avenue courts at Wilmington State Parks prior to renovation

7

WILMINGTON

Lovering Avenue Phase II improvements: tennis courts, bocce ball, pickleball and accessible pathway.

Score: 28

\$250,000

8

WILMINGTON

Brandywine Park: North Park Drive curb and walkway replacement and stonewall repair.

Score: 28

\$150,000

9

FORT DELAWARE

Fuel dock piling replacement and repair.

Score: 28

\$250,000

10

WILMINGTON

North Park Drive: Provide safe pedestrian crossing near condos to close off cut through and improve erosion issues.

Score: 28

\$225,000



For every General Fund operating dollar invested in state parks, \$40.02 in economic activity was added to the State of Delaware.



Biden Environmental Education Training Center at Cape Henlopen State Park



New Lovering Avenue courts at Wilmington State Parks

Top
15
MAJOR
NEEDS
continued

11

**ALAPOCAS
RUN**

Repair or replace Bancroft Bridge that was damaged by Hurricane Ida.

**Score:
27**

\$1,500,000



12

KILLENS POND

Boat ramp and parking relocation and improvements.

**Score:
27**

\$600,000

13

AUBURN VALLEY

Construction of a new pump station adjacent to the Papermill that will pump wastewater from Auburn mansion and museum complex to the new regional pump station.

**Score:
27**

\$350,000

14

**BRANDYWINE
ZOO**

Construction of an animal support building that will provide improved space for veterinary care, quarantine, and keeper space. Requirement of AZA accreditation. Construction is underway.

**Score:
27**

\$4,589,406



15

CAPE HENLOPEN

Main Beach bathhouse parking lot resurfacing.

**Score:
26**

\$1,700,000

Construction of the Animal Support Building at Brandywine Zoo

CAPITAL PROJECT LIST: TOP NEEDS BY EACH PARK

Top needs by each park is a list of projects that are ranked highest by park and are not presently under construction.

Alapocas Run State Park

- Bancroft Bridge repair or replacement from damage by Hurricane Ida*
- Alapocas Woods waterfall bridge stone walls stabilization
- Bancroft Mills pavilion project electric and restroom



Bancroft Bridge damage at Alapocas Run State Park



Stone wall damage at Alapocas Run State Park

Auburn Valley State Park

- New pump station adjacent to Papermill for the museum and mansion complex*
- Design/construction of septic tank replacement and sewer connection
- Office to mansion connector trail
- New NVF sewer pump station and force main*
- Construction of a new maintenance building

Bellevue State Park

- Mt. Pleasant School House interior rehab*
- Figure 8 barn roof repair and replacement*
- Track grading and resurfacing*

Brandywine Creek State Park

- Pave, fix erosion on existing stone trails*
- Historic barn structural stabilization and roof repairs *
- Add parking area to access Wilson Run Bridge
- Redesign and retrofit composting toilets at Thompson's Bridge*

Brandywine Zoo

- Renovate and upgrade historic bathrooms*
- Implementation of the new entrance and flamingo exhibit
- Renovate the "town house" enclosures, replace failing wood structures and add new mesh



Percheron Barn at Bellevue State Park

**Top
NEEDS
BY
EACH PARK
continued**

Cape Henlopen State Park

- Sewer Plant replacement and upgrades, coordination with City of Lewes is underway.
- Biden Environmental Education Training Center renovations, planning completed*
- Main parking lot resurfacing*
- Fishing pier future planning



Cape Henlopen State Park Fishing Pier

Fenwick Island State Park

- Parking expansion, amenity upgrades, entrance queuing and emergency access

First State Heritage Park

- Addition of public restroom and John Bell House storage*
- John Bell House IT updates

Fort Delaware State Park

- Fuel dock piling replacement and repair
- Masonry repairs to the brick work throughout the historic fort
- Mainland public dock piling evaluation and repair

Fox Point State Park

- Pave Phase II road and parking area
- Parking lot light repairs
- BioSun bathroom replacement

Delaware Seashore State Park

- Address Tower Road day area parking lot draining and paving*
- Fix erosion of the jetty under the Indian River Bridge; Funding in place by the US Army Corp of Engineers*
- New Road erosion repairs
- Thompson Island stabilization

Garrison's Lake Golf Course

- Addition of Cart Barn, Clubhouse and renovation of Cart Path*

Holts Landing State Park

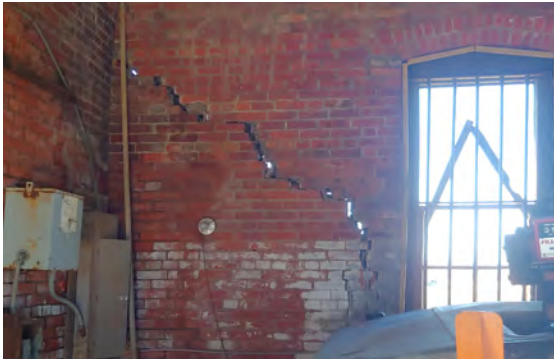
- Upgrade septic system for the park
- Relocate the kayak launch closer to the existing boat launch
- Address staff housing
- Addition of wildlife viewing platform



Erosion of the jetty under the Indian River Bridge at Delaware Seashore State Park



Sand trap in need of repair at Garrison's Lake Golf Club



Masonry repairs needed at Fort Delaware State Park



Bathroom at Cypress Point, Trap Pond State Park

Indian River Marina

- Replace dry stack roof and exterior skin*
- Piling sandblast, seal, and pile jackets
- Moving the fuel dock to resolve fueling and maintenance concerns

Killens Pond State Park

- Boat ramp and parking relocation and improvements
- Replace and upgrade water system in the campground
- Add new dump station at the campground

Lums Pond State Park

- Replace campground wooden docks with aluminum docks
- Add new waterfront cabin complex
- Replace boat rental docks with floating aluminum docks

Port Penn Interpretive Center

- Add interpretive boat shed

Statewide

- Install statewide security camera system
- Add camper cabins throughout campgrounds
- Implement consistent entrance signs at all state parks

Trap Pond State Park

- Bathroom and septic replacement at Cypress Point*
- Repair the lift station at the campground and recondition wet well
- Reroute the Bob Trail with elevated trail

White Clay Creek State Park

- Nature Center bridge evaluation and replacement*
- Nature Center Complex improvements including a new nature center facility
- Replace barn roofs*
- Robinson house upgrades for ADA and structural stability

Wilmington State Parks

- H. Fletcher Brown Park renovation*
- Lovering Avenue Phase II improvements of courts and accessible pathway*
- North Park Drive replacement of curb and walkway*
- Add steps connecting the Delaware Greenway to the Swinging Bridge to improve alignment and safety, while reducing erosion*

*Funded/partially funded

FY2023 CAPITAL PLAN

FY2023 GOVERNOR'S RECOMMENDED BUDGET

Park Facility Rehabilitation and Public Recreational Infrastructure - \$7,500,000

Funding is requested to rehabilitate the state's park and wildlife area systems, which currently contain more than 700 buildings in 32 public access areas on almost 100,000 acres statewide. Prior year funding has gone to the addition of pavilions statewide, updating bathroom facilities, maintaining historic structures, statewide roofing projects and repaving of critical parking areas. Priorities for funds are the continuation of paving at State Parks, dune crossings at the beach parks, statewide campground assessment for additional amenity upgrades, maintenance facility upgrades, improved connectivity and upgrading bathroom facilities and septic statewide, including Trap Pond's Cypress Point.

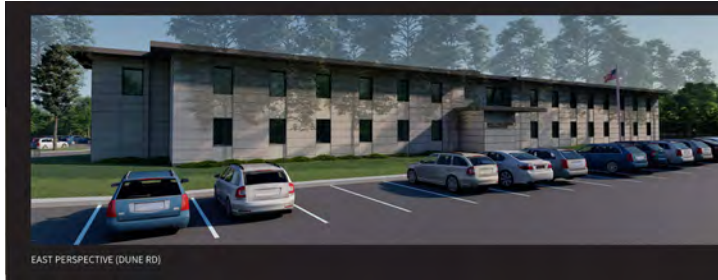
Fiscal Year 2023 funding would be utilized to begin repair of the 40-plus miles of roads within the park system and wildlife areas, which are not eligible for the Department of Transportation or Federal Highway Administration funds, and continue with utility infrastructure work by replacing aging utility and telecommunication infrastructure throughout the parks. These upgrades could be wholesale replacement, major maintenance, efficiency measures or installation of renewable energy systems not previously found on the property. Historic building and structure stabilization is also a priority and the funding could be used to match federal and private grants and programs for historic preservation.



Back-up on Route 1 to enter Fenwick Island State Park during capacity

Cape Henlopen State Park Biden Environmental Education Training Center - \$5,000,000

Funding is requested to continue construction documents and construction for renovations to the Biden Environmental Training Center at Cape Henlopen State Park. Renovations will include updating the building to bring it into compliance with modern safety standards and accessibility requirements, and modernizing the facility to allow additional conference and training opportunities. This facility would provide training and overnight facilities not currently found in the state park system. To date, plans have been completed for the staff office space and the overall layout of the facility. Work has begun to relocate the staff from the Biden Center, and the demo and utility work is prepared for the spring/summer. Funding is in place to complete all demo work, utility upgrade and to complete the construction of the first floor of the center. Fiscal Year 2023 funds will allow for a continuation to completion and the full construction of both floors, exterior shell and parking to be completed all at once without breaking the project into additional phases.



Proposed rendering for Biden Environmental Education Center at Cape Henlopen State Park

Statewide Trails and Pathways - \$1,000,000

Funding is requested for trail and pathway development to expand recreational and transportation opportunities for Delawareans and visitors. Primary focus of funds are requests for the 6-mile loop at Wolfe Neck located at Cape Henlopen State Park, necessary bridge replacement at Lums Pond, critical infrastructure improvement for trail head bathrooms and dock replacement statewide for water trails. Project funding will leverage existing and new resources from state, federal and private investments to continue Delaware’s national leadership in providing a world-class interconnected network of shared-use pathways and trails that will support non-motorized travel and recreational trail opportunities. In collaboration with the Department of Transportation, Bicycle Council, Pedestrian Advisory Committee, Council on Greenways and Trails, communities and other stakeholders, the department is continuing to implement the First State Trails and Pathways Initiative. Many of these projects are multi-phase and will be implemented in segments over the next couple of years.

ADDITIONAL CAPITAL IMPROVEMENT PROJECT REQUESTS

Cabins for Lums Pond- \$4,000,000

Funding is requested for the construction of a new cabin complex at Lums Pond State Park. The funding would match Federal Land and Water Conservation Funds and expand the offering of camping in New Castle County. Cabins would provide year-round overnight accommodations at the third busiest campground in Delaware State Parks.

White Clay Master Plan Nature Center - \$4,500,000

Funding is requested for the construction of the Nature Center complex, which was identified as the greatest need and area of focus in the White Clay Creek State Park Master Plan. The main comment from the public is they would like to see an improved nature center at the park capable of holding more students. The current building is historic and has many limitations. Our plan would be to build a nature center similar to what Trap Pond has that would house day camps and serve as a visitor center. Currently, the nature center can only be used on weekends as it doubles as the day camp building and the Division has had to turn away interested youth. The funds requested would be used to plan a new structure.

Fenwick Island Renovations - \$3,000,000

Funding is requested to match Federal Land and Water Conservation Fund (LWCF) for the renovation of Fenwick Island State Park. The park has multiple needs, but \$3 million in Fiscal Year 2023 would allow the Division to address the critical condition of the parking lot and add an additional entry/exit point as having only one entry/exit point leads to numerous safety concerns. As one of the busiest summer parks in the Division, Fenwick Island is also in need of numerous renovations and improvements including parking lot design and paving, drainage, rehabilitation of bathrooms and the concession facility, and relocation of the Chamber of Commerce building.

Trap Pond Splash Pad - \$2,500,000

Funding is requested for permitting and construction of a new splash pad at Trap Pond. Presently there is no other public pool or splash feature in western Sussex County. The splash pad would attract new visitors to the park, and broaden the park offerings to campground and daily use visitors. The Division funded a study and developed preliminary plans for the splash pad.



Rendering of proposed splash pad at Trap Pond State Park

H. Fletcher Brown Park Renovation - \$500,000

Funding is requested for critical repairs of H. Fletcher Brown Park, located at the intersection of South Park Drive and King Street in Wilmington. Due to public safety concerns, the park has been closed to visitors. Funding is necessary to repair the wall, steps, and surrounding structures in order to reopen this portion of the park. A local Rotary Club previously agreed to renovate the entire park as a centennial project but fell well short of their fundraising goal and was forced to abandon the project. The park is named in honor of philanthropist H. Fletcher Brown and is the former site of the Old Soldiers Park. H. Fletcher Brown is part of Wilmington State Parks and has been operated by Delaware State Parks for more than 20 years.

Killens Pond Waterpark Improvements - \$3,000,000

Funding is requested for phase two of a four-phase renovation to the Killens Pond Waterpark. Phase two includes a new sprayground, bathhouse, pavilion, play features and several shade structures. Funding will support continued improvements to the pools, walkways and pool decking; bathhouses, showers and lockers; ticket and concession buildings; and pool mechanics building and infrastructure.

Cape Pier Replacement Planning and Construction - \$250,000

Funding is requested in Fiscal Year 2023 for a study of potential locations and costs for a new Cape Henlopen State Park pier to replace the existing structure. The study would consider locations (current bay location versus ocean location) and the accompanying costs. Once a location is chosen, the design and permitting process is expected to take two years. The park has contributed approximately \$35,000 to \$50,000 annually for inspection and piling repairs to allow access to the pier to remain open. In Fiscal Year 2022, the Division contributed \$300,000 for piling repairs.

Fort Miles Visitor Center, Motor Pool Building and Museum Construction Document - \$2,000,000

Funding is requested for Visitor Center and Motor Pool buildings as the first phase of a Fort Miles Museum upgrade. The Visitor Center is located at the former Orientation Building and will include new interpretive panels, an office and a small gift shop to greet visitors to the museum and historic area. The Motor Pool building will be constructed as a display but also to house the historic WWII vehicle and spotting light within the Cantonment complex. The museum construction document funding will take the completed schematic designs through construction documents to assist the museum board with fundraising efforts for the permanent exhibits.

PROJECT SUMMARY

STATE CAPITAL FUNDS	FY2023 Governor's Recommend	FY2023 Request	FY2024 Request	FY2025 Request
Park Facility Rehab and Public Recreational Infrastructure	\$7,500,000	\$10,000,000	\$10,500,000	\$11,000,000
Biden Center Renovations	\$5,000,000	\$5,000,000	\$-	\$-
Statewide Trails and Pathways	\$1,000,000	\$1,000,000	\$1,000,000	\$1,000,000
Cabins for Lums Pond	\$-	\$4,000,000	\$-	\$-
White Clay Master Plan Nature Center	\$-	\$4,500,000	\$-	\$-
Fenwick Island Renovation	\$-	\$3,000,000	\$4,000,000	\$3,000,000
Trap Pond Splash Pad	\$-	\$2,500,000	\$1,000,000	\$-
Fletcher Brown Park Renovation	\$-	\$500,000	\$-	\$-
Killens Pond Water Park	\$-	\$3,000,000	\$3,000,000	\$3,000,000
Cape Henlopen Pier Replacement Planning and Construction	\$-	\$250,000	\$4,000,000	\$12,000,000
Fort Miles Visitor Center, Motor Pool and Museum Construction Document	\$-	\$2,000,000	\$-	\$-
Total	\$13,500,000	\$35,750,000	\$23,500,000	\$30,000,000



Existing Pier in need of replacement at Cape Henlopen State Park

P

= Planning

D

= Design

C

= Construction

PLANNING, DESIGN, AND CONSTRUCTION

All project timelines are dependent upon available funds

PARK/LOCATION	PROJECT
Alapocas Run State Park	Bancroft Bridge
Auburn Valley State Park	Benge Road Pump Station
Auburn Valley State Park	Sewer Force Main and Pump Station
Auburn Valley State Park	Farm Lane Improvements
Auburn Valley State Park	Snuff Mill Trail
Auburn Valley State Park	New Maintenance Building
Bellevue State Park	Bellevue Percheron Barn
Bellevue State Park	Bellevue Track
Bellevue State Park	Bellevue School House Renovation
Bellevue State Park	Figure 8 Barn Roof
Brandywine Creek State Park	Brandywine Creek Trail Paving and Restroom Replacement
Brandywine Zoo	New Quarantine Building
Brandywine Zoo	New Entry and Flamingo Exhibit
Cape Henlopen State Park	Cape Sewer Connection to Lewes WWTP
Cape Henlopen State Park	Biden Center Renovations Phase IA Upgrade Site Utilities
Cape Henlopen State Park	Biden Center Renovations Phase IB Renovation
Cape Henlopen State Park	Pier Replacement Planning*
Cape Henlopen State Park	Wolfe Neck Trail
Cape Henlopen State Park	New Park Office
Cape Henlopen State Park	Fort Miles Museum Development
Delaware Seashore	"Old Camp" Redevelopment
Delaware Seashore	Tower III Restoration Phase II
Fenwick Island State Park	Fenwick Island Renovations*
Fort Delaware State Park	Inland Dock Repairs and Island Pier Repairs
Garrisons Lake Golf Club	New Cart Barn
Garrisons Lake Golf Club	New Club House
Garrisons Lake Golf Club	Cart Path Rehabilitation Phase II
Indian River Marina	Dry Stack Building Roof and Siding Replacement
Killens Pond State Park	Boat Ramp Parking Lot*
Killens Pond State Park	Water Park Improvements Phase II*
Lums Pond State Park	New Cabins
Lums Pond State Park	Courtesy Dock at Boat Ramp
Statewide Dock Improvements	Lums Pond State Park, Killens Pond State Park, Trap Pond State Park
Statewide Paving	Cape Henlopen Main Beach and Tower Road Ocean
Summit North Marina	Soil Disposal Site Improvements
Trap Pond State Park	Splash Pad*
White Clay Creek State Park	Master Plan Implementation - New Nature Center and Access Planning
White Clay Creek State Park	Big Pond
White Clay Creek State Park	Deerfield Doors and Windows
Wilmington State Parks	H. Fletcher Brown Park Renovation
Wilmington State Parks	Lovering Courts Phase II
Wilmington State Parks	Greenway Trail Steps
Wilmington State Parks	North Park Drive Sidewalk

TIMELINE

Fiscal Year 2022				Fiscal Year 2023				Fiscal Year 2024				Fiscal Year 2025				Fiscal Year 2026				Fiscal Year 2027			
Jul	Oct	Jan	Apr	Jul	Oct	Jan	Apr	Jul	Oct	Jan	Apr	Jul	Oct	Jan	Apr	Jul	Oct	Jan	Apr	Jul	Oct	Apr	Jan
	P	D	D	D	C	C	C																
	D	D	D	C	C	C																	
C	C	C	C	C																			
D	D	C	C	C																			
		D	D	D	C	C	C																
P	P	P	D	D	C	C																	
C	C	C																			C		
D	D	D	C	C																			
P	P	C	C	C	C																		
P	D	D	D	C	C	C	C																
D	C	C	C																				
C	C	C																					
D	D	D	D	D				C	C	C	C	C											
D	D	D	D	C	C	C	C	C	C	C													
D	D	C	C																D				
D	D	D	D	C	C	C	C	C	C	C	C	C											
P	P	P	P																				
		D	D	D	C	C	C	C	C														
P	P	D	D	D	D			C	C	C	C	C											
P	P	D	D	D	D	C	C																
P	P	P	P																				
C	C	C	C																				
P	P	P	D	D	D	D	D	C	C	C	C			C	C	C	C						
		D	D	D	C	C	C																
D	D	D	C	C	C																		
D	D	D	D	C	C	C	C	C															
				D	D	C	C																
		C			C	C																	
				D	D	D	D	C	C	C	C												
				D	D	D	D	C	C	C	C												
D	D	D	D	C	C	C	C	C	C	C	C												
D	D	D			C	C	C																
P	P	P	D	D	D	D	D	C	C	C													
D	D	C	C		C	C	C																
D	C		C	C																			
				D	D	D	D	C	C	C	C												
P	P	P	D	D	D	D	C	C	C	C	C												
D	D	D	D	D	D	D	D																
D	D	D	C	C	C	C																	
P	P	D	D	D	C	C	C	C															
C	C	C	C																				
D	D	D	C	C	C																		
P	D	D	D	C	C	C																	

STATEWIDE PROJECTS

Projects are placed in order of score.

P = Planning **D** = Design **C** = Construction

*Funded **Partially Funded

Management Unit Name	Score	Project Description	Progress Status	Preliminary Cost Estimate
Fenwick Island State Park	38	Parking expansion, amenity upgrades, drop-off, renovation, entrance queuing and evacuation route improvements	P	\$10,000,000.00
Wilmington State Parks	35	H. Fletcher Brown Park - Rotary park project, complete overhaul - evaluation underway**	P	\$1,100,000.00
Cape Henlopen State Park	32	Sewer Plant replacement and upgrades - coordination with City of Lewes is underway*	D	\$5,500,000.00
Cape Henlopen State Park	32	Biden Center renovations**	C	\$11,500,000.00
Bellevue State Park	29	Percheron Barn Roof - Structural repairs and roof shingles*	C	\$235,000.00
Garrisons Lake	29	Addition of a Cart Barn, new Clubhouse, and renovating the Cart Paths*	D	\$1,500,000.00
Wilmington State Parks	28	Brandywine Park - Lovering Avenue tennis courts; renovate or remove - underway*	C	\$250,000.00
Wilmington State Parks	28	Brandywine Park - North Park Drive; replace curb, walkway, and fence*	D	\$150,000.00
Fort Delaware	28	Fuel dock piling replacement/repair engineering and construction	P	\$250,000.00
Wilmington State Parks	28	North Park Drive - Provide safe pedestrian crossing near condos; close off cut through*	D	\$225,000.00
Alapocas Run State Park	27	Repair or replacement of the Bancroft Bridge damaged by Hurricane Ida**	P	\$1,500,000.00
Killens Pond State Park	27	Boat ramp parking improvements	D	\$600,000.00
Auburn Valley State Park	27	Construction of a new pump station adjacent to the Papermill that will pump wastewater from the "Auburn Heights" portion of the park to the new regional pump station*	D	\$350,000.00
Brandywine Zoo	27	Construction of an animal services building that will address an issue for AZA accreditation*	C	\$4,589,406.00
Cape Henlopen State Park	26	Main Beach bathhouse parking lot resurface; the parking lot has numerous potholes and is severely cracked*	D	\$1,700,000.00
White Clay Creek State Park	26	Replace doors and windows at Deerfield*	D	\$350,000.00
Delaware Seashore State Park	26	Tower Road day use area parking area repave/overlay*	D	\$900,000.00

Management Unit Name	Score	Project Description	Progress Status	Preliminary Cost Estimate
Cape Henlopen State Park	26	Replace all water lines and valves		\$1,000,000.00
Bellevue State Park	25	Mt. Pleasant School House interior rehab*	C	\$750,000.00
Indian River Marina	25	Dry Stack roof replacement and exterior skin*	C	\$1,300,000.00
White Clay Creek State Park	25	Nature Center bridge evaluation and replacement*	D	\$275,000.00
Cape Henlopen State Park	25	Improvements to the Wave Building	D	\$800,000.00
Auburn Valley State Park	24	Repairs and renovations to the Marshall Mansion including connecting the septic tank to the Bengue Road pump station and office to the Marshall Mansion connector trail*	P	\$1,000,000.00
Brandywine Creek State Park	24	Pave and fix erosion on existing stone trail*	D	\$500,000.00
Lums Pond State Park	24	Replacing existing docks at Lums Pond with aluminum docks and adding a handicap accessible launch	C	\$500,000.00
Delaware Seashore State Park	23	Erosion of the jetty under the Indian River Bridge - Funding in place by the US Army Corp of Engineers*		
Bellevue State Park	23	Repair and replace metal and flat roofs	D	\$700,000.00
Trap Pond State Park	23	Bathhouse and septic replacement at Cypress Point*		\$600,000.00
Fort Delaware State Park	22	Fort Delaware masonry repairs underway	C	\$500,000.00
Auburn Valley State Park	22	Complete NVF sewer*	C	\$3,841,250.00
Auburn Valley State Park	22	Construction of new maintenance building	P	\$250,000.00
Brandywine Creek State Park	22	Historic barn in highly visible location, roof failures, structural failures, painting**		\$250,000.00
Brandywine Creek State Park	22	Parking area for trout fishing and path to Wilson Run bridge		\$150,000.00
Cape Henlopen State Park	20	New office for park staff and evaluation of options for improving traffic flow at the entrance to the park	P	\$6,500,000.00
Auburn Valley State Park	20	Trail system and two additional historic bridges**	C	\$2,750,000.00
Delaware Seashore State Park	20	Address New Road erosion		\$250,000.00
Cape Henlopen State Park	20	Widening the wooden bridge to 10'		\$1,000,000.00
Bellevue State Park	19	Address drainage issues and resurface the track*	D	\$850,000.00
Bellevue State Park	19	Tennis Center (Figure 8) parking lot resurface; parking lot has excessive cracking and deterioration - review underway	D	\$600,000.00
Killens Pond State Park	19	Installation of a new water system including pole building to house tanks at campground		\$400,000.00
Lums Pond State Park	19	Boat ramp - Replace ramp and parking (includes boat ramp courtesy dock)*	D	\$500,000.00
Trap Pond State Park	18	Repair the lift station at the campground and recondition the wet well		\$100,000.00
Auburn Valley State Park	18	Improvements to the oversee property necessary for future use		\$500,000.00

Management Unit Name	Score	Project Description	Progress Status	Preliminary Cost Estimate
Delaware Seashore State Park	18	Tower 3 renovations - underway*	C	\$1,100,000.00
Delaware Seashore State Park	18	Evaluate Thompson Island shoreline protection options for the South shoreline of the island, including living shoreline, wave attenuation structures, or as a last resort armoring**	P	\$500,000.00
Bellevue State Park	18	Utility connections at Sarah Brooks House		\$250,000.00
Alapocas Run State Park	17	Alapocas Woods - Alapocas Run waterfall bridge - stone walls stabilization (engineering review)		\$250,000.00
Auburn Valley State Park	17	NVF installation of parking lots, infrastructure, and amphitheater	P	\$5,000,000.00
Bellevue State Park	17	Bury 3-phase power lines near Figure 8 Barn	D	\$200,000.00
Brandywine Creek State Park	17	Redesign and retrofit of composting toilets at Thompson's Bridge*	C	\$250,000.00
Lums Pond State Park	17	New full service waterfront cabins	D	\$3,000,000.00
Trap Pond State Park	17	Build a boardwalk on the Bob Trail at Wootten Road to provide a safe fully off-road trail experience		\$250,000.00
Killens Pond State Park	17	Additional dump station		\$150,000.00
Killens Pond State Park	17	Renovate restrooms adjacent to the large parking lot near Pavilion #3	C	\$150,000.00
Brandywine Creek State Park	17	Maintenance road paving resurface; pavement has cracks and potholes		\$300,000.00
Bellevue State Park	16	Bellevue Hall 2nd and 3rd floor completion; this project will maximize the use of the facility and includes HVAC		\$600,000.00
Fort Delaware State Park	16	Mainland public dock (piling integrity in question)		\$250,000.00
Lums Pond State Park	16	Lums Mill House - Stabilize the structure such as repairing masonry and the outer-envelope, proper grading, and replacing the roof*		\$170,000.00
Lums Pond State Park	16	Upgrades to the primary electric supply to Lums Pond State Park		\$750,000.00
White Clay Creek State Park	16	New Nature Center and improvements to the complex	P	\$4,500,000.00
White Clay Creek State Park	15	Replace the roof on the Rankin barn at Deerfield		\$150,000.00
Auburn Valley State Park	15	Restore and rehab the Paper Mill for interpretive programming and museum experiences		\$2,000,000.00
Bellevue State Park	15	Cauffiel Barn Renovations, including roof replacement**	C	\$500,000.00
Bellevue State Park	15	Demolish far end of Miami Track		\$150,000.00
Cape Henlopen State Park	15	Upgrade Herring Point restrooms and sewer	P	\$600,000.00
Holts Landing State Park	15	Evaluate adding a holding tank to serve the bathroom		\$250,000.00

Management Unit Name	Score	Project Description	Progress Status	Preliminary Cost Estimate
Lums Pond State Park	15	Buck Jersey Trail - Trail along entrance road connecting Jersey Trail to Area 1	D	\$1,500,000.00
Statewide	15	Implement statewide security camera system		\$100,000.00
White Clay Creek State Park	15	Niven Property - Documentation of historic significance for demo		\$400,000.00
White Clay Creek State Park	15	Robinson House - ADA upgrades to facility structural repairs		\$100,000.00
White Clay Creek State Park	15	Replace roof on Wells Barn*		\$45,000.00
White Clay Creek State Park	15	Repairs to smaller outbuildings on Niven Property		\$200,000.00
Brandywine Creek State Park	15	New roofs on barn, house, and outbuildings**		\$200,000.00
Cape Henlopen State Park	15	Improvements to enforcement side of Wave Building		\$250,000.00
Trap Pond State Park	15	Enlarge campground entrance to accommodate larger RV's	D	\$100,000.00
Cape Henlopen State Park	15	Design and construction of a new fishing pier		\$18,000,000.00
Killens Pond State Park	15	Water Park Improvements Phase II (new spray ground, bathhouse, pavilion, play features and several shade structures)		\$3,000,000.00
Cape Henlopen State Park	14	Fort Miles Museum plan development and implementation	D	\$10,000,000.00
Delaware Seashore State Park	14	Evaluate Point jetty deterioration		\$1,000,000.00
Trap Pond State Park	14	Improve the drainage at the campground		\$150,000.00
White Clay Creek State Park	14	Determine future use of Krapf House and perform work in preparation for intended use		\$150,000.00
White Clay Creek State Park	14	Various repairs to maintenance complex		\$150,000.00
Cape Henlopen State Park	13	Construct Single Track Trail on the Wolfe Neck Tract at Cape Henlopen**	D	\$1,000,000.00
Delaware Seashore State Park	13	Elevate dune crossing at Tower Road		\$200,000.00
Lums Pond State Park	13	Repave parking for Area 3		\$300,000.00
White Clay Creek State Park	13	Improvements to the Nature Center entrance road to potentially include two-lane access and pedestrian trail		\$1,500,000.00
White Clay Creek State Park	13	Conversion of the Maxwell House to the Park Office	P	\$400,000.00
Alapocas Run State Park	12	Electric and restroom for the Bancroft Mills Pavilion	P	\$200,000.00
Auburn Valley State Park	12	Upgrade drain line and two of three outdoor restrooms to comply with ADA		\$250,000.00
Bellevue State Park	12	Assessment and treatment (demo/repair) of stone walls along Philadelphia Pike		\$100,000.00
Brandywine Creek State Park	12	Improve campground road		\$40,000.00

Management Unit Name	Score	Project Description	Progress Status	Preliminary Cost Estimate
Cape Henlopen State Park	12	Cape dorm updates – starting with window rebuild	C	\$50,000.00
Cape Henlopen State Park	12	Day camp accessibility to Chapel		\$150,000.00
Delaware Seashore State Park	12	Improvements to South Inlet Campground	P	\$500,000.00
Delaware Seashore State Park	12	Seasonal lifeguard housing		\$750,000.00
Fort Delaware State Park	12	Pathway leveling on the Fort walkways; granite walkways are extremely uneven with lots of tripping hazards and need to be reset		\$200,000.00
Fort Delaware State Park	12	Repair terreplein, address sink holes on top of Fort		\$500,000.00
Indian River Marina	12	Pilings sandblasted, sealed, and pile jackets		\$800,000.00
Killens Pond State Park	12	Campground bathhouse renovation		\$200,000.00
Killens Pond State Park	12	Campground F Loop power upgrades		\$130,000.00
Trap Pond State Park	12	Construction of a new Spray Ground at Trap Pond	P	\$1,500,000.00
White Clay Creek State Park	12	Niven House repairs for market rental (structural repair, HVAC and interior modifications)	P	\$150,000.00
Wilmington State Parks	12	ADA and family restroom improvements at Rockford		\$750,000.00
Cape Henlopen State Park	12	Connecting CXT restroom at playground to sewer*	C	\$50,000.00
Killens Pond State Park	12	Relocate the camp store closer to the campground and increase the size of the building		\$150,000.00
Auburn Valley State Park	11	Oversee Farm - New septic system and building renovations		\$750,000.00
Bellevue State Park	11	Development of a signage plan for wayfinding signs*	P	\$50,000.00
Brandywine Creek State Park	11	Flint Woods - Bus drop-off location (includes parking from 2020 Annual Park Priority Plan)		\$150,000.00
Cape Henlopen State Park	11	Dorm restroom upgrades		\$100,000.00
Cape Henlopen State Park	11	New boardwalk, pole showers, water heaters and ADA at McBride bathhouse		\$500,000.00
Trap Pond State Park	11	Three fishing dock replacements in the campground on A, B, and C		\$100,000.00
Trap Pond State Park	11	James Branch canoe/kayak launch at Hitch Pond Road		\$200,000.00
White Clay Creek State Park	11	Judge Morris Estate - Exterior repairs and painting (wood shingle roof repairs, soffit repairs and painting, repair and painting of window frames, sills, shutters, doors, door frames)**		\$60,000.00
Alapocas Run State Park	10	Weldin Road - Provide safe pedestrian crossing and sidewalks between Lot D and Can-Do playground/athletic fields		\$100,000.00

Management Unit Name	Score	Project Description	Progress Status	Preliminary Cost Estimate
Brandywine Creek State Park	10	Repair the retaining wall behind house at 4300 Thompsons Bridge Road		\$100,000.00
Cape Henlopen State Park	10	Gordons Pond - Restrooms/showers		\$450,000.00
Cape Henlopen State Park	10	New beach bathhouse with larger capacity		\$1,500,000.00
Delaware Seashore State Park	10	Mitchell House Road flooding repairs		\$100,000.00
Fort Delaware State Park	10	Investigation into potential boat landing sites on Pea Patch Island		\$550,000.00
Fort Delaware State Park	10	Island pier - Replace deck board		\$200,000.00
Fort Delaware State Park	10	Fort Delaware employee dock repairs - engineering and construction		\$300,000.00
Killens Pond State Park	10	Replacement of the existing boat rental dock		\$100,000.00
Lums Pond State Park	10	Replacing the bridge between Areas 1 and 2 (Bridge #32)		\$100,000.00
Lums Pond State Park	10	Repair cracks in parking lots		\$50,000.00
Lums Pond State Park	10	Asphalt repairs at the campground entrance road		\$200,000.00
Lums Pond State Park	10	Upgrade restrooms to make them ADA compliant		\$60,000.00
Trap Pond State Park	10	Upgrades to Campground D Loop		\$125,000.00
Cape Henlopen State Park	10	Add fiber to Orientation Building and 519 at Fort Miles		\$75,000.00
Bellevue State Park	9	Installation of a bike/pedestrian/cross country path parallel to entrance road and maintenance/garden access road		\$500,000.00
Bellevue State Park	9	Pole building and open salt/sand/gravel shed for maintenance facility		\$50,000.00
Brandywine Creek State Park	9	Upgrade the Hawk Watch Comfort Station for ADA accessibility		\$250,000.00
Brandywine Creek State Park	9	Design and construction of a proper kayak/canoe take out station at Thompson's Bridge on both North and South side (this would include a redesign of both an inclusion of ADA accessible take out on one side)		\$300,000.00
Cape Henlopen State Park	9	Trail Plan from Main Beach to the Point		\$750,000.00
First State Heritage Park	9	Re-evaluate restroom and storage needs with ADA and site limitations at John Bell House*	D	\$200,000.00
Trap Pond State Park	9	Boat ramp ADA dock		\$50,000.00
Bellevue State Park	8	Park Office: ADA improvements to office door and ramp		\$100,000.00
Bellevue State Park	8	Addition of six lights in the main parking lot		\$60,000.00
Bellevue State Park	8	Repair damage to bike path (Philadelphia Pike)		\$100,000.00

Management Unit Name	Score	Project Description	Progress Status	Preliminary Cost Estimate
Brandywine Creek State Park	8	Nature Center - Upgrade restrooms to include outside access and add lab/classroom, ranger office and general office space		\$500,000.00
Brandywine Zoo	8	Renovate and upgrade small restrooms (new heat system, fixtures, stall dividers) and possibly convert to family restroom*	P	\$100,000.00
Cape Henlopen State Park	8	Road and parking improvements**		\$1,500,000.00
Delaware Seashore State Park	8	Indian River Life Saving Station water/filtration upgrades		\$50,000.00
Delaware Seashore State Park	8	Towers Ocean beach bathhouse - install cement board on exterior		\$100,000.00
First State Heritage Park	8	Upgrade infrastructure at John Bell House to provide year-round staffing on site		\$50,000.00
Fort Delaware State Park	8	Create ADA access to 2nd and 3rd floor at Fort Delaware		\$300,000.00
Fort Delaware State Park	8	Island pier handrail - continue replacing handrail components		\$75,000.00
Fort Delaware State Park	8	Evaluate repairs needed to the seawall		\$1,500,000.00
Fort Delaware State Park	8	Fort Delaware replacement of floating dock for Delafort - engineering and construction		\$300,000.00
Fox Point State Park	8	Pave phase II road and parking areas		\$750,000.00
Fox Point State Park	8	Fox Point parking lot lights are not operational; the inoperable parking lot lights are a security concern		\$75,000.00
Fox Point State Park	8	Removal of BioSun bathroom		\$75,000.00
Indian River Marina	8	Moving of the fuel G dock to resolve fueling and maintenance concerns	P	\$300,000.00
Killens Pond State Park	8	Campground playground updates		\$200,000.00
Lums Pond State Park	8	Addition to Park Office to improve accessibility and provide additional staff space		\$150,000.00
Lums Pond State Park	8	Resurface tennis courts		\$50,000.00
Lums Pond State Park	8	Paving of the entrance road from the park entrance to Area 1		\$750,000.00
Lums Pond State Park	8	Renovating Area 3 restrooms for ADA compliance		\$60,000.00
Lums Pond State Park	8	Adding a new traffic lane from the office to the entrance booth, adjusting the lanes at the contact station for better flow and re-establishing a communications line between the office and the fee booth		\$75,000.00
Lums Pond State Park	8	Demolish old water storage and treatment building		\$50,000.00
Trap Pond State Park	8	Correct flooding in Nature Center handicap parking spaces		\$75,000.00

Management Unit Name	Score	Project Description	Progress Status	Preliminary Cost Estimate
Trap Pond State Park	8	Evaluate trails		\$100,000.00
Trap Pond State Park	8	C Loop restroom refurbishing		\$225,000.00
Trap Pond State Park	8	Maintenance shop electric and computer access		\$60,000.00
Trap Pond State Park	8	Trussum Pond ramp and dock improvements		\$250,000.00
Trap Pond State Park	8	Bethesda Church storage building and overflow parking		\$50,000.00
Trap Pond State Park	8	Boat ramp extension		\$75,000.00
Trap Pond State Park	8	Cypress Point restroom renovation**		\$100,000.00
White Clay Creek State Park	8	Carpenter Recreation Area - Rebuild and relocate booth		\$85,000.00
White Clay Creek State Park	8	Paving of Wells Lane from Wedgewood Road to Wells barn*		\$200,000.00
White Clay Creek State Park	8	Move Wells Lane power lines underground		\$150,000.00
White Clay Creek State Park	8	Pomeroy Trail resurfacing, address flooding issue first at section between Hopkins and Wedgewood Road		\$150,000.00
Cape Henlopen State Park	8	Update playground equipment		\$100,000.00
Killens Pond State Park	8	Upgrade playground with accessible and age specific areas; the current playground equipment is old and needs to be modernized		\$100,000.00
Lums Pond State Park	8	Connect to NCC Sewer		\$3,000,000.00
Trap Pond State Park	8	Construct an ADA accessible Kayak Launch at the Boat House		\$50,000.00
Trap Pond State Park	8	Improve boat ramp		\$75,000.00
White Clay Creek State Park	8	Repair the dam and deepen Big Pond as required by Fiscal Year 2022 Bond Bill*		\$2,000,000.00
Alapocas Run State Park	7	Alapocas maintenance shop rehab to programming/camp space	P	\$350,000.00
Brandywine Zoo	7	Implement Phase II of the master plan (zoo entrance and flamingo exhibit)	P	\$5,000,000.00
Statewide	7	Adding camper cabins to underutilized camping sites		\$600,000.00
Summit North	7	Summit North dredge*	C	\$500,000.00
White Clay Creek State Park	7	Judge Morris - Interior and exterior repairs and painting and finish floors	D	\$250,000.00
Cape Henlope State Park	6	Replace campground laundry/update facilities		\$60,000.00
Fort Delaware	6	Bake oven room restoration for increased programming use		\$150,000.00
Trap Pond State Park	6	Add shutters, repair siding and paint, repair ceiling, walls and floors, and restore pews at Bethesa Church		\$200,000.00

Management Unit Name	Score	Project Description	Progress Status	Preliminary Cost Estimate
Trap Pond State Park	6	Ranger office septic		\$75,000.00
Delaware Seashore State Park	6	Address issues with parking lots parkwide		\$5,000,000.00
Alapocas Run State Park	5	Construct Weldin Ruins/pavilion picnic area		\$100,000.00
Cape Henlopen State Park	5	New Nature Center		\$6,000,000.00
Cape Henlopen State Park	5	Install primitive area restroom		\$150,000.00
Holts Landing State Park	5	Explore relocating the kayak launch to the vicinity of the current boat launch		\$250,000.00
Trap Pond State Park	5	Construct cottages with dock at Trussum Pond property		\$500,000.00
Trap Pond State Park	5	Additional cabins		\$650,000.00
Trap Pond State Park	5	Campground upgrades (D-E Loop)		\$200,000.00
Trap Pond State Park	5	Sports complex amenities		\$200,000.00
White Clay Creek State Park	5	Establish Day-Use parking lot and fee collection at Creek Road near Second Dam		\$100,000.00
White Clay Creek State Park	5	New park office in Maxwell House		\$500,000.00
Wilmington State Parks	5	Rentable pavilion at Rockford Park		\$100,000.00
Indian River Marina	5	Construct 2nd planned phase of cottage complex		\$4,000,000.00
Killens Pond State Park	5	New cabins		\$2,000,000.00
Alapocas Run State Park	4	Extend water and electric to shop near 202 (Water and Wastewater is still needed)		\$250,000.00
Alapocas Run State Park	4	Blue Ball Barn front office expansion		\$60,000.00
Bellevue State Park	4	Asphalt/epoxy overlay to fix floor at Hunter/ Figure 8 barn		\$250,000.00
Bellevue State Park	4	New Pavilion to replace Pavilion 2 which does not have good access for rentals		\$175,000.00
Bellevue State Park	4	Cabana restroom renovation		\$125,000.00
Cape Henlopen State Park	4	Add HVAC to Cape dorms		\$200,000.00
Fort Delaware State Park	4	Rebuild historic muskrat shack in Port Penn		\$60,000.00
Fort Delaware State Park	4	Fort Delaware coating/sealing metal roofs		\$100,000.00
Fort Delaware State Park	4	Historic restoration for doors inside the Fort		\$50,000.00
Indian River Marina	4	Add additional outdoor dry stack racks		\$500,000.00
Indian River Marina	4	Parking lot improvements (evaluation of additional parking options and lighting)		\$500,000.00
Lums Pond State Park	4	Amphitheater around campground		\$75,000.00
Lums Pond State Park	4	Adding a road to turn some existing sites into pull-through sites		\$50,000.00
Lums Pond State Park	4	Camground addition of improved primitive campgrounds and tent camping areas		\$75,000.00

Management Unit Name	Score	Project Description	Progress Status	Preliminary Cost Estimate
Trap Pond State Park	4	Evaluate the park office/camp store complex functionality and location		\$400,000.00
Trap Pond State Park	4	Add campground laundry facilities		\$75,000.00
Alapocas Run State Park	4	Blue Ball Barn - Evaluate and implement plan for additional asphalt parking area(s) and evaluate parking lot lighting		\$250,000.00
Brandywine Creek State Park	3	Construct a nature play area		\$75,000.00
Delaware Seashore State Park	3	Phase III of the Assawoman Canal Trail		\$3,000,000.00
Delaware Seashore State Park	3	Improve Savage Ditch kayak launch		\$60,000.00
Trap Pond	3	Construct an ADA accessible kayak launch at the boat house		\$50,000.00
Trap Pond	3	Upgrade boat house facility		\$300,000.00
White Clay Creek State Park	3	Replace/repair Niven pond outflow pipe		\$75,000.00
Wilmington State Parks	3	Rockford band shell		\$50,000.00
Wilmington State Parks	3	Play area at Rockford Park		\$75,000.00
Brandywine Creek State Park	3	Intern house 3rd floor renovations		\$150,000.00
Brandywine Creek State Park	3	Roof repair, siding painted and chimney repairs at Renton Residence		\$150,000.00
Auburn Valley State Park	2	Evaluate parking expansion options at Yorklyn Bridge including partnering with neighbors at Snuff Mill	P	\$600,000.00
Auburn Valley State Park	2	Evaluate parking needs and reinforce surfacing at the event parking across from the Mansion		\$100,000.00
Auburn Valley State Park	2	Repair and potentially resurface the Trolley Trail that washed out during flood		\$100,000.00
Auburn Valley State Park	2	Evaluate restroom options at Yorklyn Bridge pavilion		\$120,000.00
Bellevue State Park	2	Evaluate rusted/damaged/deteriorated steel/concrete fence for removal/replacement at Carr Road		\$300,000.00
Bellevue State Park	2	Arts building - Install restrooms		\$250,000.00
Brandywine Creek State Park	2	Maintenance area - Construct four bay pole shed		\$65,000.00
Brandywine Creek State Park	2	Increase parking for 47 Adams Dam Road		\$60,000.00
Delaware Seashore State Park	2	Paving to repair potholes and cracking in the maintenance yard		\$60,000.00
Delaware Seashore State Park	2	Wi-Fi for campgrounds and Marina		\$150,000.00
Fort Delaware State Park	2	Improvement of on-island Visitor Center including exhibits, signage, etc.		\$100,000.00
Fort Delaware State Park	2	Ticket sales/gift shop - Upgrade exterior as well as interior of island gift shop and replaster gift shop walls		\$80,000.00

Management Unit Name	Score	Project Description	Progress Status	Preliminary Cost Estimate
Fort Delaware State Park	2	Blacksmith shop reconstruction		\$150,000.00
Fort Delaware State Park	2	Install stones along wall of Fort Delaware moat		\$200,000.00
Fort Delaware State Park	2	Dredge sediment from sluiceway		\$150,000.00
Fort Delaware State Park	2	Hentig and Dodd - Secure, pump out water, and repair buckling wall		\$50,000.00
Fox Point State Park	2	Pave bike path from railroad tracks to entrance		\$125,000.00
Garrisons Lake Golf Course	2	Improvements to the sand traps, greens and other playing elements		\$450,000.00
Holts Landing State Park	2	Staff on-site housing		\$300,000.00
Indian River Marina	2	Marina bulkhead investigation and repair		\$500,000.00
Indian River Marina	2	Address erosion behind dry stack office near transformer		\$100,000.00
Killens Pond State Park	2	Bathhouse for G Loop Primitive Camping area		\$350,000.00
Lums Pond State Park	2	Construct an Equestrian Center Pavilion and additional parking		\$200,000.00
Lums Pond State Park	2	Renovations and upgrades for the day camp building		\$50,000.00
Lums Pond State Park	2	Removing median from the Area 2 parking lot to allow more parking spaces		\$200,000.00
Lums Pond State Park	2	Provide wired data access to the camp store which can then be used for future needs of the proposed cabins		\$150,000.00
Lums Pond State Park	2	Adding a dock at the campground accessible by pontoon boat		\$75,000.00
Lums Pond State Park	2	Boat rental building - New siding, roof, doors, interior and exterior lights and plumbing fixtures		\$55,000.00
Lums Pond State Park	2	Construction of a pondside nature center building		\$5,000,000.00
Lums Pond State Park	2	Maintenance shop, Nature Center and boat rental internet cabling		\$80,000.00
Lums Pond State Park	2	Update Area 4 parking lot		\$50,000.00
Lums Pond State Park	2	Adding restrooms, water and a parking lot to the primitive campground youth area		\$100,000.00
Lums Pond State Park	2	Re-routing the Little Jersey Trail where it traverses the campground		\$50,000.00
Trap Pond State Park	2	Nature Center drop off circle		\$200,000.00
Trap Pond State Park	2	Add Wi-Fi to the campground		\$75,000.00
Trap Pond State Park	2	Electrical upgrades to cabins and yurts		\$60,000.00
Trap Pond State Park	2	Tar and chip Cypress Point parking lot and campground roads		\$100,000.00
Trap Pond State Park	2	Nature Center AC in restrooms		\$60,000.00

Management Unit Name	Score	Project Description	Progress Status	Preliminary Cost Estimate
White Clay Creek State Park	2	Wedgewood Road parking lot paving of entire parking lot		\$70,000.00
White Clay Creek State Park	2	Judge Morris - Finish exterior painting		\$60,000.00
Wilmington State Parks	2	Develop a sign plan; design manufacture and install (the Wilmington and Alapocas Run State Parks are in dire need of uniform and professional signage)		\$75,000.00
Killens Pond State Park	2	Renovate Restrooms at the Sports Complex		\$150,000.00
Cape Henlopen State Park	2	Repaving the Point comfort parking lot		\$150,000.00
Cape Henlopen State Park	2	Interior improvements to the Point comfort restroom		\$100,000.00
Delaware Seashore State Park	1	Develop a small loop trail near the Indian River Life Saving Station		\$100,000.00
Fort Delaware State Park	1	New boat shed building at Port Penn Interpretive Center		\$100,000.00
Fort Delaware State Park	1	Install boardwalk platform along Endicott		\$60,000.00
Wilmington State Parks	1	Plan, design and develop additional on-site parking under the I-95 bridge from Stadium Drive to South Park Drive		\$500,000.00
Brandywine Creek State Park	1	New accessible train connecting the Nature Center to Hawkwatch		\$300,000.00
Wilmington State Parks	1	Bridge connecting Rockford to Alapocas Run State Park		\$750,000.00
Holts Landing State Park	1	Elevated wildlife viewing platform comparable to Thompson Island		\$330,000.00
Alapocas Run State Park	0	Bathroom at Lot B – maintenance will be needed for pavilion/Weldin Ruins expansion		\$100,000.00
Bellevue State Park	0	Providing internet access to the Maintenance Shop and 651 Marsh Road residence		\$150,000.00
Brandywine Creek State Park	0	Add internet to maintenance area for computer placement		\$150,000.00
Brandywine Zoo	0	Renovate the “town house” enclosures (replace failing wood structures and add new mesh)		\$150,000.00
Holts Landing State Park	0	Install campground host sites and hook ups		\$250,000.00
Indian River Marina	0	Three-sided structure for maintenance and yard equipment storage		\$75,000.00
Killens Pond State Park	0	Enlarge park office		\$100,000.00
Statewide	0	Consistent entrance signs at all State Parks		\$1,000,000.00
Statewide	0	Addition of central air conditioning to staff occupied park housing	C	\$500,000.00
Statewide	0	Intern/staff dorm housing		\$500,000.00
Trap Pond State Park	0	ADA family restroom at A Loop		\$75,000.00

Management Unit Name	Score	Project Description	Progress Status	Preliminary Cost Estimate
Auburn Valley State Park	0	Afforestation Mitigation Project in Field #8; planting of trees requires stormwater compliance		\$50,000.00
Cape Henlopen State Park	0	New pavilion at Youth Camp		\$75,000.00
Cape Henlopen State Park	0	Entrance trail by SPI Pharma		\$300,000.00
Delaware Seashore State Park	0	Upgrade phones and address IT needs at Life Saving Station		\$75,000.00
Delaware Seashore State Park	0	Additional walkway on the East side of the island needs to be elevated at Burtons Pond		\$100,000.00
Indian River Marina	0	Replace copper phone lines and upgrade fiber network		\$200,000.00
Killens Pond State Park	0	Provide additional parking at the Sports Complex to double the existing size or provide additional parking lots		\$500,000.00
Trap Pond State Park	0	Pole building for equipment and wood storage		\$50,000.00
Trap Pond State Park	0	Modernization of restroom facility at C Loop		\$200,000.00
Trap Pond State Park	0	Add an improved boat ramp with kayak launch for non-motorized watercraft at Trussum Pond		\$75,000.00
White Clay Creek State Park	0	Parking lot along Creek Road near Faulkner Property		\$100,000.00
White Clay Creek State Park	0	Regrade Paddock area for stable Carpenter Area overflow parking		\$100,000.00
White Clay Creek State Park	0	Structural repairs on the pump house		\$50,000.00
White Clay Creek State Park	0	Add restroom for staff at the trail shop		\$75,000.00
				\$207,960,656.00
		FUNDS APPROPRIATED FOR PROJECTS ON THE LIST		\$26,505,656

Nearly



\$53 million in state and local taxes were initiated by Delaware's State Park system, including \$6.6 million in gross receipts tax, \$1.5 million in hotel taxes, \$4.7 million in income taxes, and \$9.5 million in property taxes.



Department of Natural Resources and Environmental Control
Division of Parks & Recreation
89 Kings Highway, Dover, DE 19901

Shawn M. Garvin, *Secretary*
Department of Natural Resources and Environmental Control

Raymond E. Bivens, *Director*
Division of Parks & Recreation