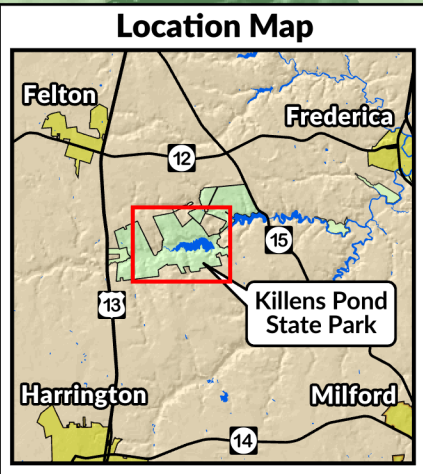
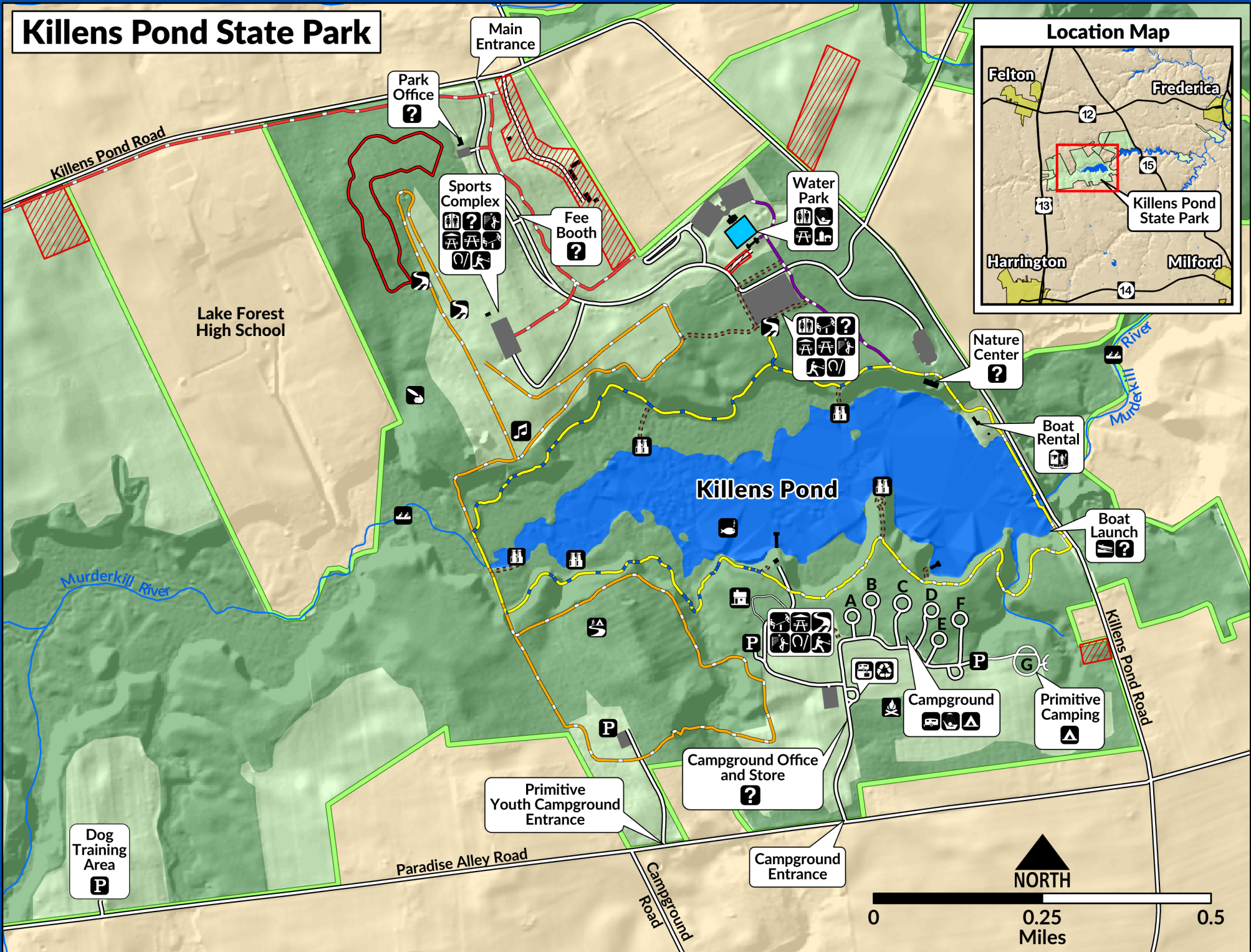


Killens Pond State Park



Killens Pond State Park

Legend

- | | | |
|------------------|------------------------|-------------------------|
| State Park Land | Picnic Pavilions | Fishing |
| Wooded Park Land | Picnic Tables | Boat Launch |
| Building | Food Concession | Boat Rentals |
| Parking | Scenic Overlook | Canoe Trail |
| Water Park | Trail Head | Primitive Youth Camping |
| Restricted Area | Baseball Fields | Cabins |
| Roads | Disc Golf | Tent Camping |
| Boat Docks | Amphitheater /Fire Pit | Campground |
| Parking | Horseshoe Pits | Showers/Bath House |
| Restrooms | Volleyball Courts | Dump Station |
| Information | Playground | Recycling Center |
| Concert Pavilion | | |



Contact Information

Park Office: (302) 284-4526 Nature Center: (302) 284-4299
 Campground Reservations: (877) 987-2757
www.destateparks.com



DELAWARE STATE PARKS
 YOUR OUTDOOR ADVENTURE STARTS HERE

Trails and Permitted Uses

- | | | | |
|---------------------------------|--|--|--|
| Bicycle Trail (2.3 mi.) | | Pondside Nature Trail/
Cross Country Course | |
| Cross Country Course (3.1 mi.) | | Life Course (0.8 mi.) | |
| Pondside Nature Trail (1.1 mi.) | | Unnamed Multi-use Trail | |
| Pondside Nature Trail (1.5 mi.) | | Unnamed Hiking Trail | |

Trail Descriptions

Bicycle Trail

Trail Width	Surface Type	Trail Grade	Accessible
Avg 6 Feet Min 4 Feet	Paved Crushed Stone	Avg 1% Max 6%	- Yes

The Bicycle Trail begins outside the park at the intersection of Route 13 and Killens Pond Road. Trail users will parallel Killens Pond Road passing Lake Forest High School and the Main Park Entrance before turning into the park. The Bicycle Trail is relatively flat with a paved or crushed stone surface. Trail users will pass the Park Office and connect with the Sports Complex and the Water Park.

Pondside Trail

Trail Width	Surface Type	Trail Grade	Accessible
Avg 5 Feet Min 2 Feet	Packed Earth Packed Sand	Avg 3% Max 20%	- Yes

The Pondside Trail offers an easy to moderate hike over a packed earth surface with many side connector trails linking to views of the pond. The trail traverses mixed hardwood forests and provides opportunities for wildlife observation. Connecting trails lead to viewpoints and fishing spots at the pond's edge.

Cross Country Course

Trail Width	Surface Type	Trail Grade	Accessible
Avg 5 Feet Min 4 Feet	Packed Earth	Avg 2% Max 11%	- Yes

The Cross Country Course begins in the open field near the Sports Complex. The course continues through mature forest, traverses a bridge on the west end of Killens Pond, and loops around the area of the primitive youth campground.

Life Course Trail

Trail Width	Surface Type	Trail Grade	Accessible
Avg 6 Feet Min 4 Feet	Packed Earth	Avg 1% Max 7%	- No

The Life Course Trail follows an easy contour along a forested path of grass and pine needles. Workout enthusiasts can stop at twenty exercise stations along the trail.