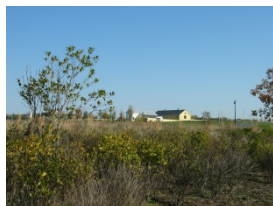


# Rock Climbing Intern

## Alapocas Run and Wilmington State Parks

DELAWARE STATE PARK INTERNSHIP PROGRAM



CLICK HERE TO APPLY: <https://destateparks.com/volunteer/positions>

### DESCRIPTION

Looking for a way to share your love of outdoor adventure? In this position you will have the opportunity to ignite a lifelong appreciation of the outdoors through Rock Climbing! As a part of our Rock Climbing Team you will be working with a diverse group of park visitors providing education and leadership on outdoor rock climbing. The intern will be working with field experts to become actively engaged in resource-based educational program delivery, and research, and activity.

### LOCATION

Alapocas Run and Wilmington State Parks  
<https://destateparks.com/FieldsStreams/Wilmington>  
<https://destateparks.com/FieldsStreams/Alapocas>

### TERM OF SERVICE

6 Months – Full Time 30-35 hours per week  
**Preferred Start** – April

### RESPONSIBILITIES

- Assist with developing camp curriculum focused on Rock Climbing/Recreation.
- Assist with rock climbing programs and special events.
- Complete a special project related to the rock climbing wall, programs, and visitors or underserved populations – to be determined after first two weeks of service.
- Interact with program participants, answering questions, assisting with activities, and ensuring participation opportunity for all attendees
- May lead program or subset of program participants.
- Maintain tracking of program participants. May complete program report
- Report suggestions and observations.
- Other tasks as assigned and agreed upon.

### REQUIREMENTS

- Must have previous experience in rock climbing.
- Appreciation and understanding of the natural environment.
- Understanding of educational principles and techniques- experience in teaching or educational programming helpful
- Pleasant and personable. Relates well with people
- Independent and responsible
- Able to assist with both Indoor and outdoor programs
- Able to stand for long periods or to walk trails accompanying participants

- Able to communicate effectively with a diverse public
- Able to speak publicly in front of groups or audiences
- Ability to understand and follow verbal and written instructions
- Must be able swim
- Attends training and performs duties in compliance with Division and Park Customer Service Guidelines and Safety Guidelines

**PERSONAL CHARACTERISTICS:**

- Excellent people skills (especially with children)
- Fun spirited, creative, energetic
- Conscientious and mature
- Able to work as part of a team

**DIRECT SUPERVISOR**

The direct supervisor will be the Interpretive Program Manager.

**BENEFITS**

- **Training:** A hallmark of the program, interns receive training from the field experts they will be working with. Includes Seasonal Interpreter Training and FA/CPR. In addition to this formal and informal training to successfully conduct their internship assignment, interns will have the opportunity to build associated skills and share real-time experience with park staff and colleagues. Training will be made available to the interns to further their personal and professional development.
- **Housing:** Limited co-ed housing is available, at no fee, for interns providing full-time hours (30 or more per week). If selected for housing, an intern will share a house, duplex or dorm facility with other interns.
- **Activities:** Interns will have the opportunity not only to visit ALL Delaware State Parks at no fee, but also participate in many of the tours, programs, and associated events for free. Delaware State Parks span the length of the state and whether it be canoeing at Trap Pond State Park, surfing at Delaware Seashore State Park, attending a concert at Bellevue State Park, or touring the living history facility at Fort Delaware, there is certainly something for everyone.
- **Stipend Available:** Interns are not employees of the State of Delaware- they are considered volunteers and are not paid for their service. Interns may elect to receive a stipend to help cover expenses incurred during their volunteer intern service. The stipend is a fixed amount of \$100 per week for service of 30 or more hours per week or \$50.00 per week for service of between 20 – 29 hours/ week paid biweekly as a direct deposit into the Intern’s bank account.
  - The stipend is not a wage, but does count toward the total income on which the intern’s tax obligation is based. Interns electing to receive the stipend will complete IRS Form W-9 Request for Tax-Payer Identification as self-employed and will receive a Form 1099 at the end of the year that reports the amount of income from the stipend. No taxes are withheld from the stipend.

**All Delaware State Parks Interns are required to undergo and successfully complete a background check performed by the Division.**

**TO APPLY:** <https://destateparks.com/volunteer/positions>



The Department of Natural Resources and Environmental Control is committed to affirmative action, equal opportunity, and the diversity of its workforce